

# Product Datasheet

## CCR7 Antibody (3D12) [Allophycocyanin] NBP1-43011-100tests

Unit Size: 100 Tests

Store at 4C in the dark.

[www.novusbio.com](http://www.novusbio.com)



[technical@novusbio.com](mailto:technical@novusbio.com)

Protocols, Publications, Related Products, Reviews, Research Tools and Images at:  
[www.novusbio.com/NBP1-43011](http://www.novusbio.com/NBP1-43011)

Updated 10/23/2024 v.20.1

Earn rewards for product  
reviews and publications.

Submit a publication at [www.novusbio.com/publications](http://www.novusbio.com/publications)

Submit a review at [www.novusbio.com/reviews/destination/NBP1-43011](http://www.novusbio.com/reviews/destination/NBP1-43011)



**NBP1-43011-100tests****CCR7 Antibody (3D12) [Allophycocyanin]**

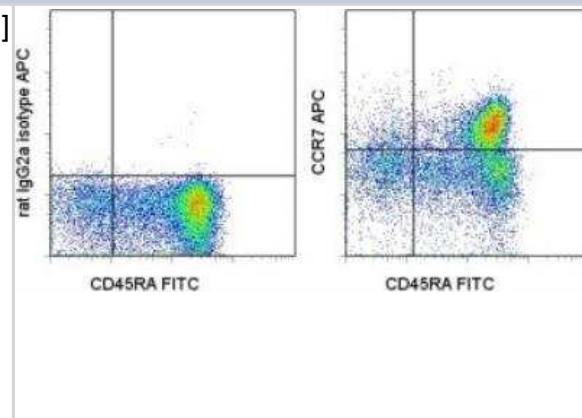
| <b>Product Information</b> |   |
|----------------------------|---|
| <b>Unit Size</b>           | 100 Tests                                   |
| <b>Concentration</b>       | 5 mg/ml                                     |
| <b>Storage</b>             | Store at 4C in the dark.                    |
| <b>Clonality</b>           | Monoclonal                                  |
| <b>Clone</b>               | 3D12  |
| <b>Preservative</b>        | 0.09% Sodium Azide                          |
| <b>Isotype</b>             | IgG2a Kappa                                 |
| <b>Conjugate</b>           | Allophycocyanin                             |
| <b>Purity</b>              | Protein A or G purified                     |
| <b>Buffer</b>              | PBS (pH 7.2) with 0.1% gelatin and 0.2% BSA |

| <b>Product Description</b> |   |
|----------------------------|---|
| <b>Host</b>                | Rat                                       |
| <b>Gene ID</b>             | 1236                                      |
| <b>Gene Symbol</b>         | CCR7                                      |
| <b>Species</b>             | Human                                     |
| <b>Immunogen</b>           | The immunogen for this antibody was CCR7. |

| <b>Product Application Details</b> |  |
|------------------------------------|--|
| <b>Applications</b>                | Flow Cytometry   |
| <b>Recommended Dilutions</b>       | Flow Cytometry 1:10-1:1000   |
| <b>Application Notes</b>           | This 3D12 antibody has been tested by flow cytometric analysis of human peripheral blood cells. This can be used at less than or equal to 0.5 ug per test. Cell number should be determined empirically but can range from 10 <sup>5</sup> to 10 <sup>8</sup> cells/test. It is recommended that the staining incubation time be increased to at least 45 minutes at 4°C for optimal staining. |

**Images**

Flow Cytometry: CCR7 Antibody (3D12) [Allophycocyanin] [NBP1-43011] - Staining of normal human peripheral blood cells with Anti-Human CD45RA FITC and Rat IgG2a ? Isotype Control APC (left) or Anti-Human CD197 (CCR7) APC (right). Cells in the lymphocyte gate were used for analysis.





### **Novus Biologicals USA**

10730 E. Briarwood Avenue  
Centennial, CO 80112  
USA  
Phone: 303.730.1950  
Toll Free: 1.888.506.6887  
Fax: 303.730.1966  
nb-customerservice@bio-techne.com

### **Bio-Techne Canada**

21 Canmotor Ave  
Toronto, ON M8Z 4E6  
Canada  
Phone: 905.827.6400  
Toll Free: 855.668.8722  
Fax: 905.827.6402  
canada.inquires@bio-techne.com

### **Bio-Techne Ltd**

19 Barton Lane  
Abingdon Science Park  
Abingdon, OX14 3NB, United Kingdom  
Phone: (44) (0) 1235 529449  
Free Phone: 0800 37 34 15  
Fax: (44) (0) 1235 533420  
info.EMEA@bio-techne.com

### **General Contact Information**

www.novusbio.com  
Technical Support: nb-technical@bio-techne.com  
Orders: nb-customerservice@bio-techne.com  
General: novus@novusbio.com

### **Products Related to NBP1-43011-100tests**

---

|                   |   |
|-------------------|---|
| NBP1-43005-0.05mg | Rat IgG2a Kappa Light Chain Isotype Control (R2a) [Allophycocyanin] |
| NBP2-57375PEP     | CCR7 Recombinant Protein Antigen                                    |
| 210-TA-005        | TNF-alpha [Unconjugated]  |
| NBP2-08171        | CCR7 Overexpression Lysate  |

---

### **Limitations**

This product is for research use only and is not approved for use in humans or in clinical diagnosis. Primary Antibodies are guaranteed for 1 year from date of receipt.

For more information on our 100% guarantee, please visit [www.novusbio.com/guarantee](http://www.novusbio.com/guarantee)

Earn gift cards/discounts by submitting a review: [www.novusbio.com/reviews/submit/NBP1-43011](http://www.novusbio.com/reviews/submit/NBP1-43011)

Earn gift cards/discounts by submitting a publication using this product:  
[www.novusbio.com/publications](http://www.novusbio.com/publications)

