

# Product Datasheet

## Mouse IgG1 Kappa Isotype Control (P3.6.2.8.1) [PerCP/Cy5.5] NBP1-42839-0.1mg

Unit Size: 0.1 mg

Store at 4C in the dark.

[www.novusbio.com](http://www.novusbio.com)



[technical@novusbio.com](mailto:technical@novusbio.com)

**Reviews: 2**

Protocols, Publications, Related Products, Reviews, Research Tools and Images at:  
[www.novusbio.com/NBP1-42839](http://www.novusbio.com/NBP1-42839)

Updated 10/23/2024 v.20.1

Earn rewards for product  
reviews and publications.

Submit a publication at [www.novusbio.com/publications](http://www.novusbio.com/publications)

Submit a review at [www.novusbio.com/reviews/destination/NBP1-42839](http://www.novusbio.com/reviews/destination/NBP1-42839)



**NBP1-42839-0.1mg**

Mouse IgG1 Kappa Isotype Control (P3.6.2.8.1) [PerCP/Cy5.5]

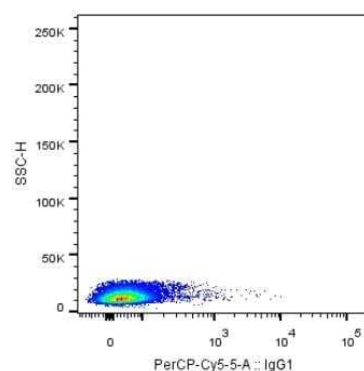
Product Information	
Unit Size	0.1 mg
Concentration	Please contact technical services for concentration.
Storage	Store at 4C in the dark.
Clonality	Monoclonal
Clone	P3.6.2.8.1
Preservative	0.09% Sodium Azide
Isotype	IgG1 Kappa
Conjugate	PerCP/Cy5.5
Buffer	PBS (pH 7.2) with 0.1% gelatin

Product Description	
Description	This Mouse IgG1 Kappa immunoglobulin is useful as an isotype control.
Host	Mouse
Species	Mouse

Product Application Details	
Applications	Flow Cytometry, Immunocytochemistry/ Immunofluorescence, Immunohistochemistry
Recommended Dilutions	Flow Cytometry 1:10 - 1:1000, Immunohistochemistry 1:10-1:500, Immunocytochemistry/ Immunofluorescence 1:10-1:500
Application Notes	Use the isotype control at the same concentration as the experimental antibody. Optimal dilution of this antibody should be experimentally determined.

**Images**

Flow Cytometry: Mouse, Human IgG1 Kappa Isotype Control (P3.6.2.8.1) [PerCP/Cy5.5] [NBP1-42839] - Human buffy coat stained with Mouse IgG1 Kappa isotype control. Image from verified customer review.





### **Novus Biologicals USA**

10730 E. Briarwood Avenue  
Centennial, CO 80112  
USA  
Phone: 303.730.1950  
Toll Free: 1.888.506.6887  
Fax: 303.730.1966  
nb-customerservice@bio-techne.com

### **Bio-Techne Canada**

21 Canmotor Ave  
Toronto, ON M8Z 4E6  
Canada  
Phone: 905.827.6400  
Toll Free: 855.668.8722  
Fax: 905.827.6402  
canada.inquires@bio-techne.com

### **Bio-Techne Ltd**

19 Barton Lane  
Abingdon Science Park  
Abingdon, OX14 3NB, United Kingdom  
Phone: (44) (0) 1235 529449  
Free Phone: 0800 37 34 15  
Fax: (44) (0) 1235 533420  
info.EMEA@bio-techne.com

### **General Contact Information**

www.novusbio.com  
Technical Support: nb-technical@bio-  
techne.com  
Orders: nb-customerservice@bio-techne.com  
General: novus@novusbio.com

### **Limitations**

This product is for research use only and is not approved for use in humans or in clinical diagnosis. Isotype Controls are guaranteed for 1 year from date of receipt.

For more information on our 100% guarantee, please visit [www.novusbio.com/guarantee](http://www.novusbio.com/guarantee)

Earn gift cards/discounts by submitting a review: [www.novusbio.com/reviews/submit/NBP1-42839](http://www.novusbio.com/reviews/submit/NBP1-42839)

Earn gift cards/discounts by submitting a publication using this product:  
[www.novusbio.com/publications](http://www.novusbio.com/publications)

