

Product Datasheet

GDF-15 Antibody (7C12.B3.F2) - BSA Free NBP1-42725

Unit Size: 0.1 mg

Store at -20C short term. Aliquot and store at -80C long term. Avoid freeze-thaw cycles.

www.novusbio.com



technical@novusbio.com

Protocols, Publications, Related Products, Reviews, Research Tools and Images at:
www.novusbio.com/NBP1-42725

Updated 2/21/2025 v.20.1

Earn rewards for product
reviews and publications.

Submit a publication at www.novusbio.com/publications

Submit a review at www.novusbio.com/reviews/destination/NBP1-42725



NBP1-42725

GDF-15 Antibody (7C12.B3.F2) - BSA Free

Product Information	
Unit Size	0.1 mg
Concentration	Please see the vial label for concentration. If unlisted please contact technical services.
Storage	Store at -20C short term. Aliquot and store at -80C long term. Avoid freeze-thaw cycles.
Clonality	Monoclonal
Clone	7C12.B3.F2
Preservative	0.01% Sodium Azide
Isotype	IgG2b Kappa
Purity	Protein A purified
Buffer	0.02 M Potassium Phosphate, 0.15 M Sodium Chloride, pH 7.2

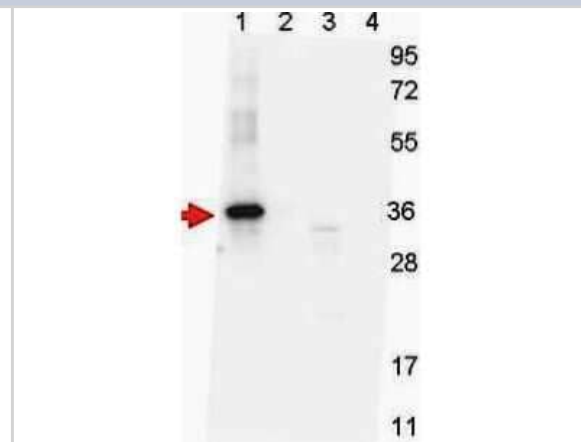
Product Description	
Description	This product was purified from concentrated tissue culture supernatant Protein A chromatography Store vial at -20C prior to opening. Aliquot contents and freeze at -20C or below for extended storage. Avoid cycles of freezing and thawing. Centrifuge product if not completely clear after standing at room temperature. This product is stable for several weeks at 4C as an undiluted liquid. Dilute only prior to immediate use.
Host	Mouse
Gene ID	9518
Gene Symbol	GDF15
Species	Human
Reactivity Notes	A BLAST analysis was used to suggest partial reactivity with GDF-15 from chimpanzee and macaque based on a 92% homology. Cross-reactivity with GDF-15 from other sources has not been determined.
Specificity/Sensitivity	This antibody specifically reacts with an H variant sequence of human GDF-15 protein from human tissues.
Immunogen	This Protein A purified GDF-15 Antibody (7C12.B3.F2) was prepared by repeated immunizations with a synthetic peptide corresponding to a region near the amino terminal end of human GDF-15 protein. A residue of cysteine was added to facilitate coupling to KLH. (Uniprot: Q99988)

Product Application Details	
Applications	Western Blot, ELISA
Recommended Dilutions	Western Blot 1:1000, ELISA 1:150000
Application Notes	This Protein A purified This product has been tested by ELISA and western blotting for human NAG-1 protein. This reagent is particularly useful to differentiate polymorphic forms of NAG-1 protein present in human serum samples. This antibody is useful in dual antibody immunometric assays (EIA). Expect bands in Western blots of approximately 14 and 28 kDa in size corresponding to NAG-1 monomer and dimer, respectively, using the appropriate cell lysate or extract. Specific conditions for reactivity should be optimized by the end user.

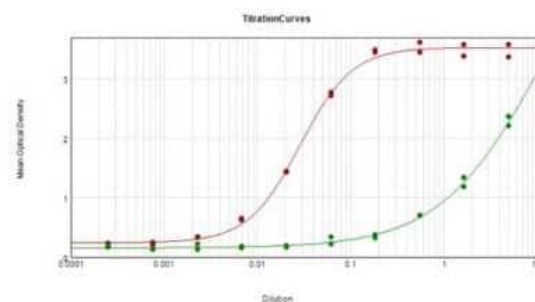


Images

Western Blot: GDF-15 Antibody (7C12.B3.F2) [NBP1-42725] - Detection of recombinant GDF-15 protein present in *Pichia pastoris* whole cell lysates expressed in yeast cells : lane 1 - GDF-15 H variant with SUMO expression tag at 36 kDa; lane 2 - GDF-15 D variant with SUMO expression tag at 36 kDa; lane 3 - GDF-15 H variant; and lane 4 - GDF-15 D variant. All lysates were run under reducing conditions. Primary antibody was used at a 1:1,000 dilution in TBS containing 1% BSA and 0.2% Tween, and reacted overnight at 4C. For detection, a 1:40,000 dilution of peroxidase conjugated Gt-a-Mouse IgG secondary antibody was used in Blocking Buffer for Fluorescent Western Blotting for 30 min at room temperature. Molecular weight estimation was made by comparison to prestained MW markers. Image was captured using the VersaDoc(TM) 4000MP Imaging System.



ELISA: GDF-15 Antibody (7C12.B3.F2) [NBP1-42725] - ELISA Results of GDF-15 antibody (7C12.B3.F2). Each well was coated in duplicate with 0.1ug of conjugate [H-variant Red line, D-variant Green line]. The working dilution is 1:35,000. The starting dilution of antibody was 5ug/ml and the X-axis represents the Log10 of a 3-fold dilution. This titration is a 4-parameter curve fit where the IC50 is defined as the titer of the antibody. Assay performed using HRP Conjugate Stabilizer, Rabbit Anti-Mouse IgG HRP conjugated and TMB substrate.





Novus Biologicals USA

10730 E. Briarwood Avenue
Centennial, CO 80112
USA
Phone: 303.730.1950
Toll Free: 1.888.506.6887
Fax: 303.730.1966
nb-customerservice@bio-techne.com

Bio-Techne Canada

21 Canmotor Ave
Toronto, ON M8Z 4E6
Canada
Phone: 905.827.6400
Toll Free: 855.668.8722
Fax: 905.827.6402
canada.inquires@bio-techne.com

Bio-Techne Ltd

19 Barton Lane
Abingdon Science Park
Abingdon, OX14 3NB, United Kingdom
Phone: (44) (0) 1235 529449
Free Phone: 0800 37 34 15
Fax: (44) (0) 1235 533420
info.EMEA@bio-techne.com

General Contact Information

www.novusbio.com
Technical Support: nb-technical@bio-techne.com
Orders: nb-customerservice@bio-techne.com
General: novus@novusbio.com

Products Related to NBP1-42725

HAF007	Goat anti-Mouse IgG Secondary Antibody [HRP]
NB720-B	Rabbit anti-Mouse IgG (H+L) Secondary Antibody [Biotin]
NBP1-43317-0.5mg	Mouse IgG2b Kappa Light Chain Isotype Control (MG2b)
NBP2-51921-0.1mg	Recombinant Mouse GDF-15 His Protein

Limitations

This product is for research use only and is not approved for use in humans or in clinical diagnosis. Primary Antibodies are guaranteed for 1 year from date of receipt.

For more information on our 100% guarantee, please visit www.novusbio.com/guarantee

Earn gift cards/discounts by submitting a review: www.novusbio.com/reviews/submit/NBP1-42725

Earn gift cards/discounts by submitting a publication using this product:
www.novusbio.com/publications

