

Product Datasheet

ATF6 Antibody (70B1413.1) [FITC] NBP1-40256F-0.1ml

Unit Size: 0.1 ml

Store at 4C in the dark.

www.novusbio.com



technical@novusbio.com

Protocols, Publications, Related Products, Reviews, Research Tools and Images at:
www.novusbio.com/NBP1-40256F

Updated 10/23/2024 v.20.1

Earn rewards for product
reviews and publications.

Submit a publication at www.novusbio.com/publications

Submit a review at www.novusbio.com/reviews/destination/NBP1-40256F



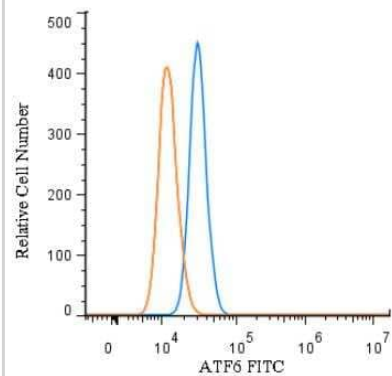
NBP1-40256F-0.1ml

ATF6 Antibody (70B1413.1) [FITC]

Product Information	
Unit Size	0.1 ml
Concentration	Please see the vial label for concentration. If unlisted please contact technical services.
Storage	Store at 4C in the dark.
Clonality	Monoclonal
Clone	70B1413.1
Preservative	0.05% Sodium Azide
Isotype	IgG1 Kappa
Conjugate	FITC
Purity	Protein G purified
Buffer	PBS
Product Description	
Host	Mouse
Gene ID	22926
Gene Symbol	ATF6
Species	Human, Mouse, Rat, Porcine, Plant, Rabbit
Specificity/Sensitivity	This ATF6 antibody detects both the full length and the cleaved/active protein.
Immunogen	This monoclonal antibody was made against a partial protein containing amino acids 1-273 of human ATF6.
Notes	This conjugate is made on demand. Actual recovery may vary from the stated volume of this product. The volume will be greater than or equal to the unit size stated on the datasheet.
Product Application Details	
Applications	Western Blot, Flow Cytometry, Flow (Intracellular), Immunoblotting, Immunocytochemistry/ Immunofluorescence, Immunohistochemistry, Immunohistochemistry-Frozen, Immunohistochemistry-Paraffin, Immunoprecipitation, Chromatin Immunoprecipitation (ChIP), CyTOF-ready, Knockout Validated
Recommended Dilutions	Western Blot, Flow Cytometry, Immunohistochemistry, Immunocytochemistry/ Immunofluorescence, Immunoprecipitation, Immunohistochemistry-Paraffin, Immunohistochemistry-Frozen, Immunoblotting, Flow (Intracellular), Chromatin Immunoprecipitation (ChIP), CyTOF-ready, Knockout Validated
Application Notes	Optimal dilution of this antibody should be experimentally determined.

Images

Flow (Intracellular): ATF6 Antibody (70B1413.1) [FITC] [NBP1-40256F] - An intracellular stain was performed on HeLa cells with ATF6 Antibody (70B1413.1) NBP1-40256F (blue) and a matched isotype control (orange). Cells were fixed with 4% PFA and then permeablized with 0.1% saponin. Cells were incubated in an antibody dilution of 10 μ g/mL for 30 minutes at room temperature. Both antibodies were conjugated to FITC.





Novus Biologicals USA

10730 E. Briarwood Avenue
Centennial, CO 80112
USA
Phone: 303.730.1950
Toll Free: 1.888.506.6887
Fax: 303.730.1966
nb-customerservice@bio-techne.com

Bio-Techne Canada

21 Canmotor Ave
Toronto, ON M8Z 4E6
Canada
Phone: 905.827.6400
Toll Free: 855.668.8722
Fax: 905.827.6402
canada.inquires@bio-techne.com

Bio-Techne Ltd

19 Barton Lane
Abingdon Science Park
Abingdon, OX14 3NB, United Kingdom
Phone: (44) (0) 1235 529449
Free Phone: 0800 37 34 15
Fax: (44) (0) 1235 533420
info.EMEA@bio-techne.com

General Contact Information

www.novusbio.com
Technical Support: nb-technical@bio-techne.com
Orders: nb-customerservice@bio-techne.com
General: novus@novusbio.com

Products Related to NBP1-40256F-0.1ml

NBP1-43319F	Mouse IgG1 Kappa Isotype Control (P3.6.2.8.1) [FITC]
H00022926-P01-10ug	Recombinant Human ATF6 GST (N-Term) Protein
H00008720-Q01-10ug	Recombinant Human MBTPS1 GST (N-Term) Protein
NBP2-69885	Human ATF6 ELISA Kit (Colorimetric)

Limitations

This product is for research use only and is not approved for use in humans or in clinical diagnosis. Primary Antibodies are guaranteed for 1 year from date of receipt.

For more information on our 100% guarantee, please visit www.novusbio.com/guarantee

Earn gift cards/discounts by submitting a review: www.novusbio.com/reviews/submit/NBP1-40256F

Earn gift cards/discounts by submitting a publication using this product:
www.novusbio.com/publications

