

Product Datasheet

BMI-1 Antibody - BSA Free NBP1-33748

Unit Size: 100 ul

Aliquot and store at -20C or -80C. Avoid freeze-thaw cycles.

www.novusbio.com



technical@novusbio.com

Reviews: 1

Protocols, Publications, Related Products, Reviews, Research Tools and Images at:
www.novusbio.com/NBP1-33748

Updated 2/21/2025 v.20.1

Earn rewards for product
reviews and publications.

Submit a publication at www.novusbio.com/publications

Submit a review at www.novusbio.com/reviews/destination/NBP1-33748



NBP1-33748

BMI-1 Antibody - BSA Free

Product Information

Unit Size	100 ul
Concentration	Concentrations vary lot to lot. See vial label for concentration. If unlisted please contact technical services.
Storage	Aliquot and store at -20C or -80C. Avoid freeze-thaw cycles.
Clonality	Polyclonal
Preservative	0.01% Thimerosal
Isotype	IgG
Purity	Antigen Affinity-purified
Buffer	0.1M Tris (pH 7), 0.1M Glycine, 20% Glycerol
Target Molecular Weight	37 kDa

Product Description

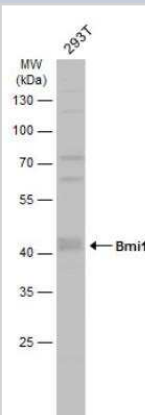
Host	Rabbit
Gene ID	648
Gene Symbol	BMI1
Species	Human, Mouse, Canine, Feline
Reactivity Notes	Cat (99%), Xenopus laevis (90%).
Immunogen	Recombinant protein encompassing a sequence within the center region of human BMI-1. The exact sequence is proprietary.

Product Application Details

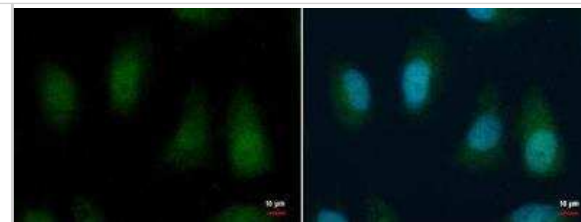
Applications	Western Blot, Immunocytochemistry/ Immunofluorescence, Immunohistochemistry, Immunohistochemistry-Paraffin, Immunoprecipitation
Recommended Dilutions	Western Blot 1:500-1:3000, Immunohistochemistry 1:100-1:1000, Immunocytochemistry/ Immunofluorescence 1:100-1:1000, Immunoprecipitation 1:100-1:1000, Immunohistochemistry-Paraffin 1:100-1:1000

Images

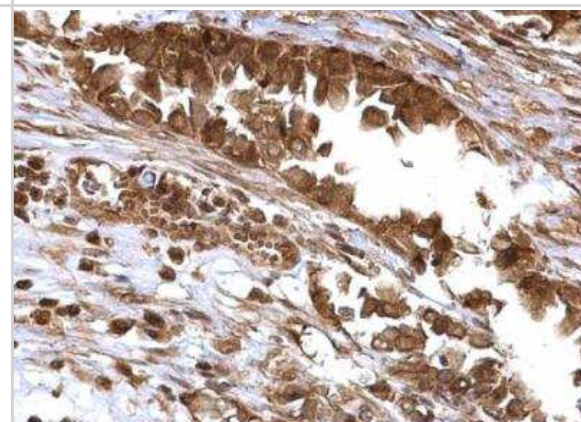
Western Blot: BMI-1 Antibody [NBP1-33748] - Whole cell extract (30 ug) was separated by 10% SDS-PAGE, and the membrane was blotted with BMI-1 antibody diluted at 1:1000. HRP-conjugated anti-rabbit IgG antibody was used to detect the primary antibody.



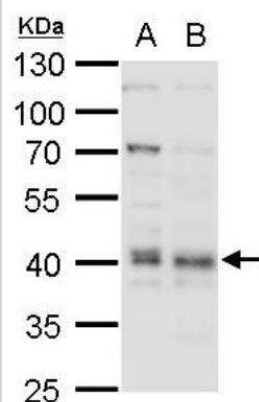
Immunocytochemistry/ Immunofluorescence: BMI-1 Antibody [NBP1-33748] - Sample: HeLa cells. Green: BMI1 protein stained by BMI1. Blue: Hoechst 33342 staining. Scale bar = 10 μ m.



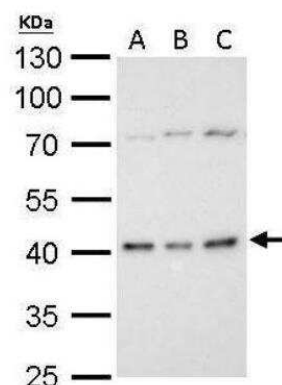
Immunohistochemistry-Paraffin: BMI-1 Antibody [NBP1-33748] - Paraffin-embedded human ovarian carcinoma. Bmi1 antibody dilution: 1:500.



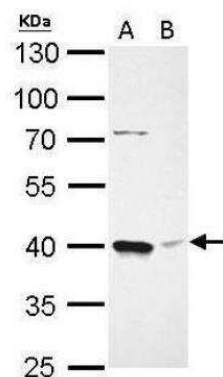
Western Blot: BMI-1 Antibody [NBP1-33748] - A. 30 μ g K562 whole cell lysate/extract B. 30 μ g THP-1 whole cell lysate/extract 10% SDS-PAGE Bmi1 antibody dilution: 1:1000 The HRP-conjugated anti-rabbit IgG antibody (NBP2-19301) was used to detect the primary antibody.



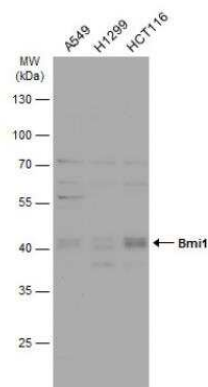
Western Blot: BMI-1 Antibody [NBP1-33748] - A. 30 μ g C8D30 whole cell lysate/extract. B. 30 μ g BCL-1 whole cell lysate/extract. C. 30 μ g Raw264.7 whole cell lysate/extract. 10 % SDS-PAGE. Dilution: 1:1000.



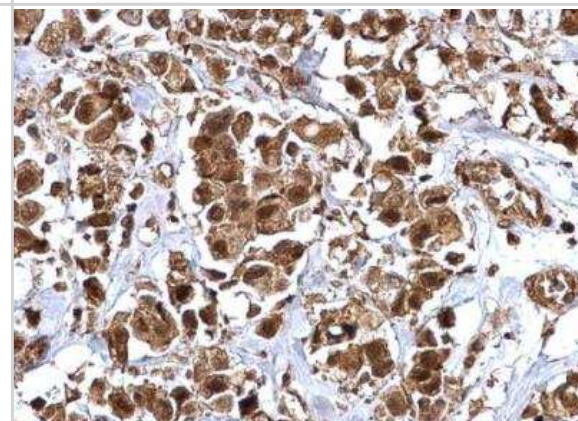
Western Blot: BMI-1 Antibody [NBP1-33748] - A. 30 ug THP-1 whole cell lysate/extract. B. 30 ug HL-60 whole cell lysate/extract. 10 % SDS-PAGE. Dilution: 1:1000



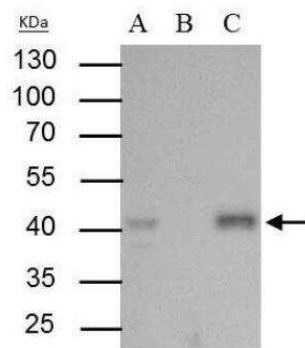
Western Blot: BMI-1 Antibody [NBP1-33748] - Various whole cell extracts (30 ug) were separated by 10% SDS-PAGE, and the membrane was blotted with Bmi1 antibody diluted at 1:1000. The HRP-conjugated anti-rabbit IgG antibody (NBP2-19301) was used to detect the primary antibody.



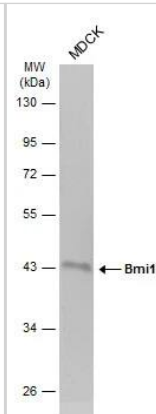
Immunohistochemistry-Paraffin: BMI-1 Antibody [NBP1-33748] - Paraffin-embedded human breast carcinoma. Bmi1 antibody dilution: 1:500.



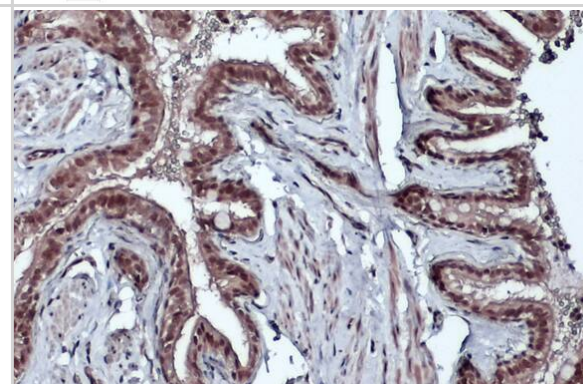
Immunoprecipitation: BMI-1 Antibody [NBP1-33748] - Sample: 293T whole cell lysate/extract A : 30 ug whole cell lysate/extract of BMI-1 protein expressing 293T cells B : Control with 2.5 ug of pre-immune rabbit IgG C : Immunoprecipitation of BMI-1 protein by 2.5 ug of BMI-1 antibody 10% SDS-PAGE The immunoprecipitated BMI-1 protein was detected by BMI-1 antibody diluted at 1 : 1000. EasyBlot anti-rabbit IgG (HRP) was used as a secondary reagent.



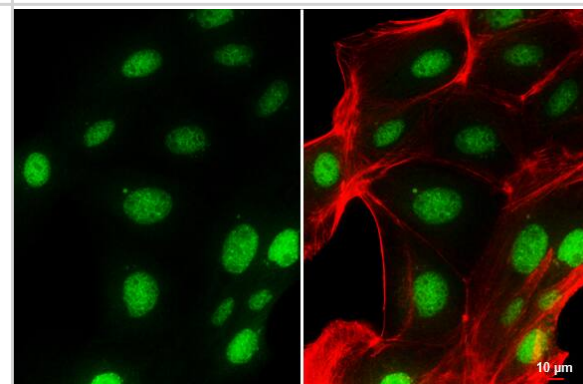
Western Blot: BMI-1 Antibody [NBP1-33748] - Whole cell extract (30 ug) was separated by 10% SDS-PAGE, and the membrane was blotted with BMI-1 antibody (NBP1-33748) diluted at 1:1000. The HRP-conjugated anti-rabbit IgG antibody was used to detect the primary antibody, and the signal was developed with Trident ECL plus-Enhanced.



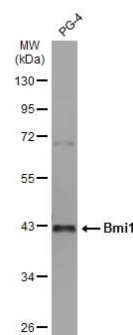
Immunohistochemistry-Paraffin: BMI-1 Antibody [NBP1-33748] - BMI-1 antibody detects BMI-1 protein at cytoplasm and nucleus by immunohistochemical analysis. Sample: Paraffin-embedded dog lung. BMI-1 stained by BMI-1 antibody (NBP1-33748) diluted at 1:500. Antigen Retrieval: Citrate buffer, pH 6.0, 15 min



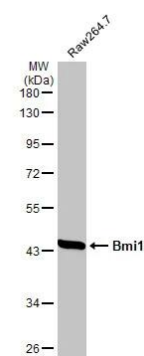
Immunocytochemistry/ Immunofluorescence: BMI-1 Antibody [NBP1-33748] - BMI-1 antibody detects BMI-1 protein at nucleus by immunofluorescent analysis. Sample: MDCK cells were fixed in 4% paraformaldehyde at RT for 15 min. Green: BMI-1 stained by BMI-1 antibody (NBP1-33748) diluted at 1:1000. Red: phalloidin, a cytoskeleton marker, diluted at 1:100. Scale bar= 10 um.



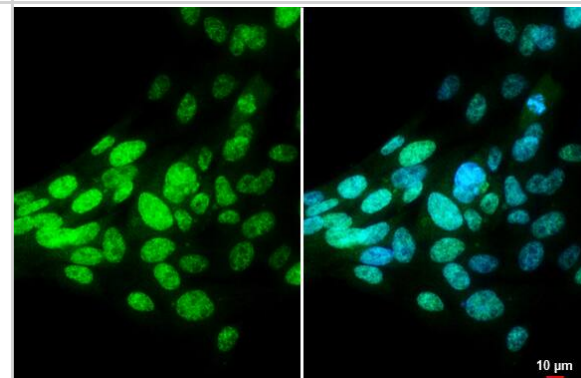
Western Blot: BMI-1 Antibody [NBP1-33748] - Whole cell extract (30 ug) was separated by 10% SDS-PAGE, and the membrane was blotted with BMI-1 antibody (NBP1-33748) diluted at 1:1000. The HRP-conjugated anti-rabbit IgG antibody was used to detect the primary antibody.



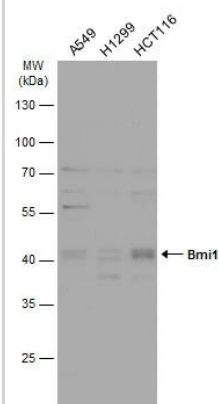
Western Blot: BMI-1 Antibody [NBP1-33748] - Whole cell extract (30 ug) was separated by 10% SDS-PAGE, and the membrane was blotted with BMI-1 antibody (NBP1-33748) diluted at 1:1000. The HRP-conjugated anti-rabbit IgG antibody was used to detect the primary antibody.



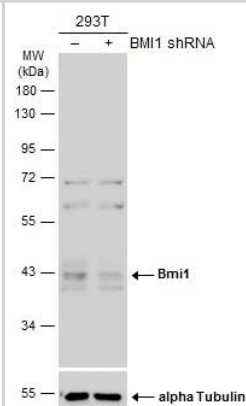
Immunocytochemistry/ Immunofluorescence: BMI-1 Antibody [NBP1-33748] - BMI-1 antibody detects BMI-1 protein at nucleus by immunofluorescent analysis. Sample: PG-4 cells were fixed in 4% paraformaldehyde at RT for 15 min. Green: BMI-1 stained by BMI-1 antibody (NBP1-33748) diluted at 1:1000. Blue: Hoechst 33342 staining. Scale bar= 10 μ m.



Western Blot: BMI-1 Antibody [NBP1-33748] - Various whole cell extracts (30 ug) were separated by 10% SDS-PAGE, and the membrane was blotted with BMI-1 antibody (NBP1-33748) diluted at 1:1000. The HRP-conjugated anti-rabbit IgG antibody was used to detect the primary antibody.



Western Blot: BMI-1 Antibody [NBP1-33748] - Non-transfected (–) and transfected (+) HeLa whole cell extracts (30 ug) were separated by 10% SDS-PAGE, and the membrane was blotted with Bmi1 antibody diluted at 1:500. The HRP-conjugated anti-rabbit IgG antibody was used to detect the primary antibody.





Novus Biologicals USA

10730 E. Briarwood Avenue
Centennial, CO 80112
USA
Phone: 303.730.1950
Toll Free: 1.888.506.6887
Fax: 303.730.1966
nb-customerservice@bio-techne.com

Bio-Techne Canada

21 Canmotor Ave
Toronto, ON M8Z 4E6
Canada
Phone: 905.827.6400
Toll Free: 855.668.8722
Fax: 905.827.6402
canada.inquires@bio-techne.com

Bio-Techne Ltd

19 Barton Lane
Abingdon Science Park
Abingdon, OX14 3NB, United Kingdom
Phone: (44) (0) 1235 529449
Free Phone: 0800 37 34 15
Fax: (44) (0) 1235 533420
info.EMEA@bio-techne.com

General Contact Information

www.novusbio.com
Technical Support: nb-technical@bio-techne.com
Orders: nb-customerservice@bio-techne.com
General: novus@novusbio.com

Products Related to NBP1-33748

HAF008	Goat anti-Rabbit IgG Secondary Antibody [HRP]
NB7160	Goat anti-Rabbit IgG (H+L) Secondary Antibody [HRP]
NBP2-24891	Rabbit IgG Isotype Control
NB110-40823PEP	BMI-1 Antibody Blocking Peptide

Limitations

This product is for research use only and is not approved for use in humans or in clinical diagnosis. Primary Antibodies are guaranteed for 1 year from date of receipt.

For more information on our 100% guarantee, please visit www.novusbio.com/guarantee

Earn gift cards/discounts by submitting a review: www.novusbio.com/reviews/submit/NBP1-33748

Earn gift cards/discounts by submitting a publication using this product:
www.novusbio.com/publications

