

Product Datasheet

SET Antibody - BSA Free NBP1-33713

Unit Size: 0.1 ml

Aliquot and store at -20C or -80C. Avoid freeze-thaw cycles.

www.novusbio.com



technical@novusbio.com

Publications: 1

Protocols, Publications, Related Products, Reviews, Research Tools and Images at:
www.novusbio.com/NBP1-33713

Updated 9/9/2025 v.20.1

Earn rewards for product
reviews and publications.

Submit a publication at www.novusbio.com/publications

Submit a review at www.novusbio.com/reviews/destination/NBP1-33713



NBP1-33713

SET Antibody - BSA Free

Product Information

Unit Size	0.1 ml
Concentration	Concentrations vary lot to lot. See vial label for concentration. If unlisted please contact technical services.
Storage	Aliquot and store at -20C or -80C. Avoid freeze-thaw cycles.
Clonality	Polyclonal
Preservative	0.01% Thimerosal
Isotype	IgG
Purity	Antigen Affinity-purified
Buffer	0.1M Tris (pH 7), 0.1M Glycine, 20% Glycerol
Target Molecular Weight	33 kDa

Product Description

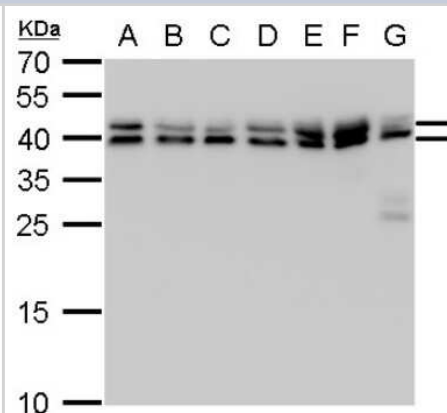
Description	Novus Biologicals Rabbit SET Antibody - BSA Free (NBP1-33713) is a polyclonal antibody validated for use in WB, ICC/IF and IP. Anti-SET Antibody: Cited in 1 publication. All Novus Biologicals antibodies are covered by our 100% guarantee.
Host	Rabbit
Gene ID	6418
Gene Symbol	SET
Species	Human, Mouse, Rat
Specificity/Sensitivity	Antibody reactive against recombinant protein, detects immunogen. Further validation in progress.
Immunogen	Recombinant protein encompassing a sequence within the center region of human SET. The exact sequence is proprietary.

Product Application Details

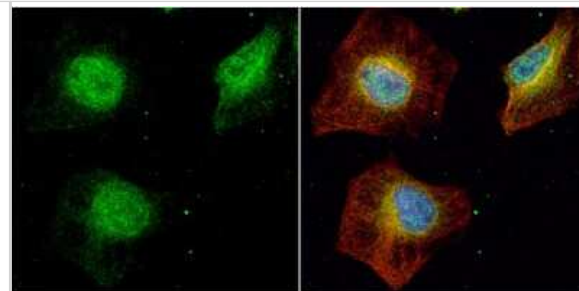
Applications	Western Blot, Immunocytochemistry/ Immunofluorescence, Immunoprecipitation
Recommended Dilutions	Western Blot 1:500-1:3000, Immunocytochemistry/ Immunofluorescence 1:100-1:1000, Immunoprecipitation 1:100-1:500

Images

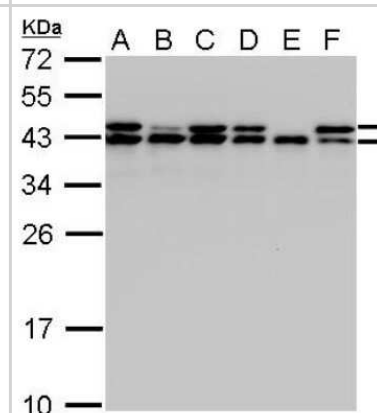
Western Blot: SET Antibody [NBP1-33713] - SET antibody detects SET protein by western blot analysis. A. 30 ug Neuro2A whole cell lysate/extract. B. 30 ug GL261 whole cell lysate/extract. C. 30 ug C8D30 whole cell lysate/extract. D. 30 ug NIH-3T3 whole cell lysate/extract. E. 30 ug BCL-1 whole cell lysate/extract. F. 30 ug Raw 264.7 whole cell lysate/extract. G. 30 ug C2C12 whole cell lysate/extract. 12 % SDS-PAGE. SET antibody dilution: 1:1000



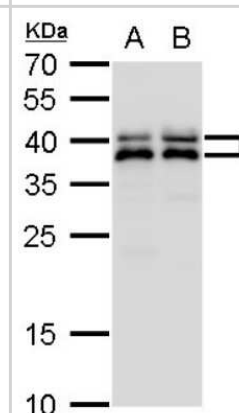
Immunocytochemistry/Immunofluorescence: SET Antibody [NBP1-33713] - SET antibody detects SET protein at cytoplasm and nucleus by immunofluorescent analysis. Sample: HeLa cells were fixed in 4% paraformaldehyde at RT for 15 min. Green: SET protein stained by SET antibody diluted at 1:500. Red: alpha Tubulin, a cytoskeleton marker, stained by alpha Tubulin antibody diluted at 1:1000. Blue: Hoechst 33342 staining.



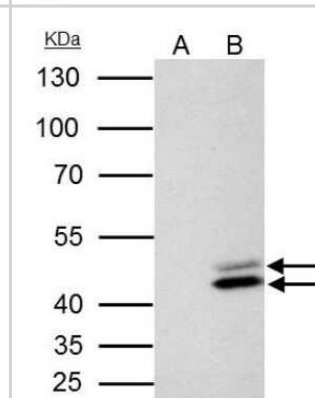
Western Blot: SET Antibody [NBP1-33713] - SET antibody detects SET protein by Western blot analysis. A. 30 ug A431 whole cell lysate/extract. B. 30 ug H1299 whole cell lysate/extract. C. 30 ug HeLa whole cell lysate/extract. D. 30 ug HepG2 whole cell lysate/extract. E. 30 ug Molt-4 whole cell lysate/extract. F. 30 ug Raji whole cell lysate/extract. 12 % SDS-PAGE. SET antibody dilution: 1:1000 SET antibody detects SET protein by Western blot analysis. Observed SET protein is larger than the predicted M.W., possibly due to post-translational



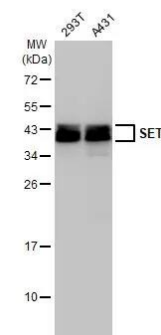
Western Blot: SET Antibody [NBP1-33713] - SET antibody detects SET protein by western blot analysis. A. 30 ug PC-12 whole cell lysate/extract. B. 30 ug Rat2 whole cell lysate/extract. 12 % SDS-PAGE. SET antibody dilution: 1:1000.



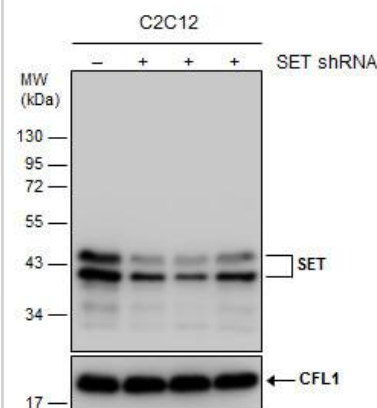
Immunoprecipitation: SET Antibody [NBP1-33713] - SET antibody immunoprecipitates SET protein in IP experiments. IP samples: HeLa whole cell extract. A. Control with 4 ug of preimmune Rabbit IgG. B. Immunoprecipitation of SET protein by 4 ug SET antibody. 10 % SDS-PAGE. The immunoprecipitated SET protein was detected by SET antibody diluted at 1:500.



Western Blot: SET Antibody [NBP1-33713] - Various whole cell extracts (30 ug) were separated by 12% SDS-PAGE, and the membrane was blotted with SET antibody (NBP1-33713) diluted at 1:1000. The HRP-conjugated anti-rabbit IgG antibody was used to detect the primary antibody.



Western Blot: SET Antibody [NBP1-33713] - Non-transfected (–) and transfected (+) C2C12 whole cell extracts (30 ug) were separated by 12% SDS-PAGE, and the membrane was blotted with SET antibody diluted at 1:1000.



Publications

Ludvigsen M, Thorlacius-Ussing L, Vorum H et al. Proteomic Characterization of Colorectal Cancer Cells versus Normal-Derived Colon Mucosa Cells: Approaching Identification of Novel Diagnostic Protein Biomarkers in Colorectal Cancer Int J Mol Sci 2020-05-14 [PMID: 32422974] (WB, Human)



Novus Biologicals USA

10730 E. Briarwood Avenue
Centennial, CO 80112
USA
Phone: 303.730.1950
Toll Free: 1.888.506.6887
Fax: 303.730.1966
nb-customerservice@bio-techne.com

Bio-Techne Canada

21 Canmotor Ave
Toronto, ON M8Z 4E6
Canada
Phone: 905.827.6400
Toll Free: 855.668.8722
Fax: 905.827.6402
canada.inquires@bio-techne.com

Bio-Techne Ltd

19 Barton Lane
Abingdon Science Park
Abingdon, OX14 3NB, United Kingdom
Phone: (44) (0) 1235 529449
Free Phone: 0800 37 34 15
Fax: (44) (0) 1235 533420
info.EMEA@bio-techne.com

General Contact Information

www.novusbio.com
Technical Support: nb-technical@bio-techne.com
Orders: nb-customerservice@bio-techne.com
General: novus@novusbio.com

Products Related to NBP1-33713

HAF008	Goat anti-Rabbit IgG Secondary Antibody [HRP]
NB7160	Goat anti-Rabbit IgG (H+L) Secondary Antibody [HRP]
NBP2-24891	Rabbit IgG Isotype Control
NBP2-23464	Recombinant Human SET His Protein

Limitations

This product is for research use only and is not approved for use in humans or in clinical diagnosis. Primary Antibodies are guaranteed for 1 year from date of receipt.

For more information on our 100% guarantee, please visit www.novusbio.com/guarantee

Earn gift cards/discounts by submitting a review: www.novusbio.com/reviews/submit/NBP1-33713

Earn gift cards/discounts by submitting a publication using this product:
www.novusbio.com/publications

