

Product Datasheet

Lysyl Oxidase Homolog 2/LOXL2 Antibody - BSA Free NBP1-32954

Unit Size: 0.1 ml

Aliquot and store at -20C or -80C. Avoid freeze-thaw cycles.

www.novusbio.com



technical@novusbio.com

Reviews: 1 Publications: 13

Protocols, Publications, Related Products, Reviews, Research Tools and Images at:
www.novusbio.com/NBP1-32954

Updated 9/9/2025 v.20.1

**Earn rewards for product
reviews and publications.**

Submit a publication at www.novusbio.com/publications

Submit a review at www.novusbio.com/reviews/destination/NBP1-32954



NBP1-32954**Lysyl Oxidase Homolog 2/LOXL2 Antibody - BSA Free**

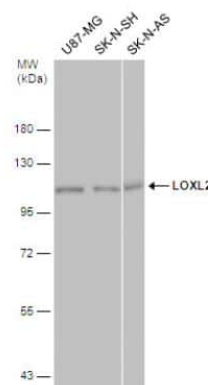
Product Information	
Unit Size	0.1 ml
Concentration	Concentrations vary lot to lot. See vial label for concentration. If unlisted please contact technical services.
Storage	Aliquot and store at -20C or -80C. Avoid freeze-thaw cycles.
Clonality	Polyclonal
Preservative	0.025% Proclin 300
Isotype	IgG
Purity	Antigen Affinity-purified
Buffer	PBS, 20% Glycerol
Target Molecular Weight	87 kDa

Product Description	
Description	Novus Biologicals Knockout (KO) Validated Rabbit Lysyl Oxidase Homolog 2/LOXL2 Antibody - BSA Free (NBP1-32954) is a polyclonal antibody validated for use in IHC, WB, ELISA and ICC/IF. Anti-Lysyl Oxidase Homolog 2/LOXL2 Antibody: Cited in 12 publications. All Novus Biologicals antibodies are covered by our 100% guarantee.
Host	Rabbit
Gene ID	4017
Gene Symbol	LOXL2
Species	Human, Mouse, Feline
Reactivity Notes	Immunogen displays the following percentage of sequence identity for non-tested species: Chicken (87%), Xenopus laevis (83%). Feline reactivity reported from a verified customer review.
Immunogen	Recombinant protein encompassing a sequence within the center region of human Lysyl Oxidase Homolog 2/LOXL2. The exact sequence is proprietary.

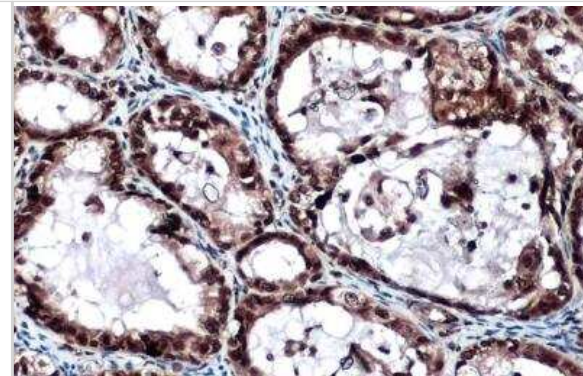
Product Application Details	
Applications	Western Blot, Immunohistochemistry-Paraffin, ELISA, Immunocytochemistry/Immunofluorescence, Immunohistochemistry, Knockout Validated
Recommended Dilutions	Western Blot 1:500-1:10000, ELISA Assay dependent, Immunohistochemistry 1:100-1:1000, Immunocytochemistry/ Immunofluorescence 1:100-1:1000, Immunohistochemistry-Paraffin 1:100-1:1000, Knockout Validated

Images

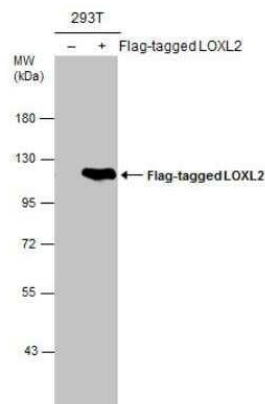
Western Blot: Lysyl Oxidase Homolog 2/LOXL2 Antibody [NBP1-32954]
- Various whole cell extracts (30 ug) were separated by 7.5% SDS-PAGE, and the membrane was blotted with LOXL2 antibody diluted at 1:1000. The HRP-conjugated anti-rabbit IgG antibody (NBP2-19301) was used to detect the primary antibody.



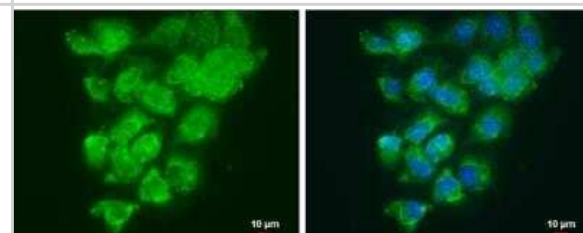
Immunohistochemistry-Paraffin: Lysyl Oxidase Homolog 2/LOXL2 Antibody [NBP1-32954] - Human ovarian cancer. LOXL2 stained by LOXL2 antibody diluted at 1:500. Antigen Retrieval: Citrate buffer, pH 6.0, 15 min.



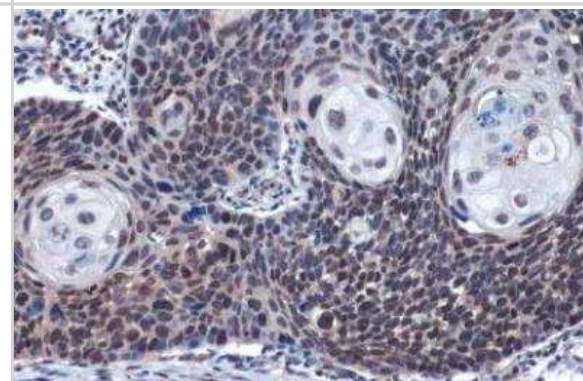
Western Blot: Lysyl Oxidase Homolog 2/LOXL2 Antibody [NBP1-32954] - Non-transfected (-) and transfected (+) 293T whole cell extracts (30 ug) were separated by 7.5% SDS-PAGE, and the membrane was blotted with LOXL2 antibody diluted at 1:5000.



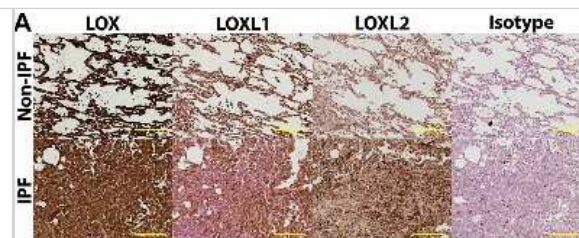
Immunocytochemistry/Immunofluorescence: Lysyl Oxidase Homolog 2/LOXL2 Antibody [NBP1-32954] - A431 cells were fixed in ice-cold MeOH for 5 min. Green: LOXL2 protein stained by LOXL2 antibody (diluted at 1:500). Blue: Hoechst 33342 staining. Scale bar = 10 μm.



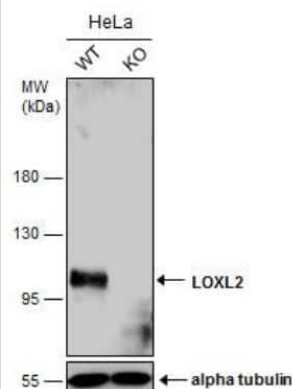
Immunohistochemistry-Paraffin: Lysyl Oxidase Homolog 2/LOXL2 Antibody [NBP1-32954] - Human esophageal carcinoma. LOXL2 stained by LOXL2 antibody diluted at 1:3000. Antigen Retrieval: Citrate buffer, pH 6.0, 15 min.



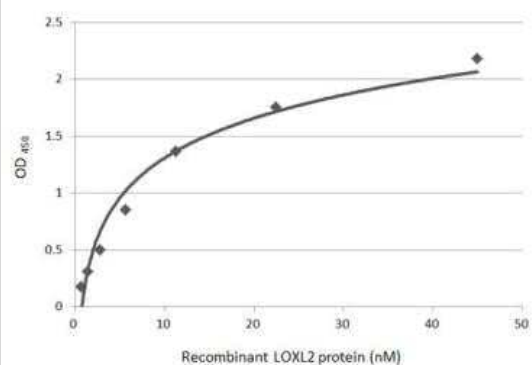
Immunohistochemistry-Paraffin: Lysyl Oxidase Homolog 2/LOXL2 Antibody [NBP1-32954] - Collagen organization and lysyl oxidase family of enzymes are differentially expressed and interrelated differently in IPF. Representative IHC images of lysyl oxidase enzymes in the lungs. Images are representative of lung tissues from non-IPF (n=10) and IPF (n=8) subjects (brown, protein of interest; blue, nucleus; pink, cytoplasm; scale bar: 200m). Image collected and cropped by CiteAb from the following publication (<https://pubmed.ncbi.nlm.nih.gov/29125826/>) licensed under a CC-BY license.



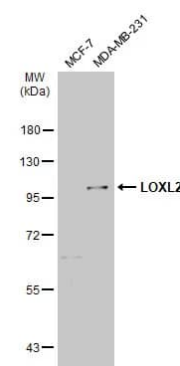
Western Blot: Lysyl Oxidase Homolog 2/LOXL2 Antibody [NBP1-32954] - Wild-type (WT) and LOXL2 knockout (KO) HeLa cell extracts (30 ug) were separated by 7.5% SDS-PAGE, and the membrane was blotted with LOXL2 antibody diluted at 1:500.



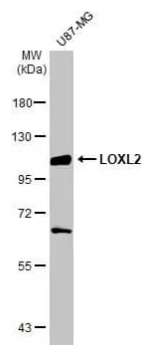
ELISA: Lysyl Oxidase Homolog 2/LOXL2 Antibody [NBP1-32954] - Indirect ELISA analysis was performed by coating the plate with recombinant Human LOXL2 protein, His tag (44.94-0.7 nM). Coated protein was probed with LOXL2 antibody (1 ug/mL). Goat anti-rabbit IgG antibody (HRP) (1:10000) was used to detect the bound primary antibody.



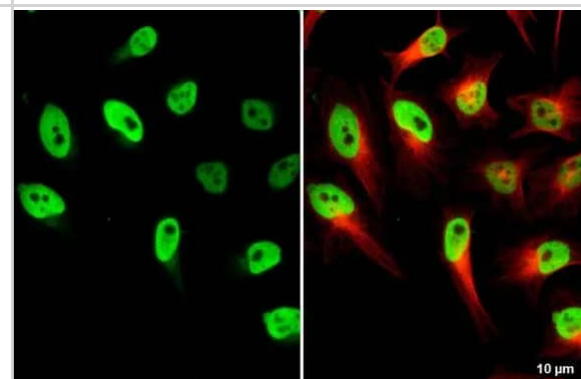
Western Blot: Lysyl Oxidase Homolog 2/LOXL2 Antibody [NBP1-32954] - Various whole cell extracts (30 ug) were separated by 7.5% SDS-PAGE, and the membrane was blotted with Lysyl Oxidase Homolog 2/LOXL2 antibody (NBP1-32954) diluted at 1:5000. The HRP-conjugated anti-rabbit IgG antibody was used to detect the primary antibody.



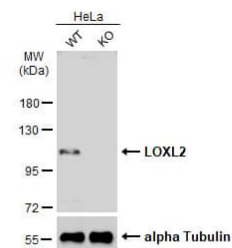
Western Blot: Lysyl Oxidase Homolog 2/LOXL2 Antibody [NBP1-32954]
 - Whole cell extract (30 ug) was separated by 7.5% SDS-PAGE, and the membrane was blotted with Lysyl Oxidase Homolog 2/LOXL2 antibody (NBP1-32954) diluted at 1:5000. The HRP-conjugated anti-rabbit IgG antibody was used to detect the primary antibody.



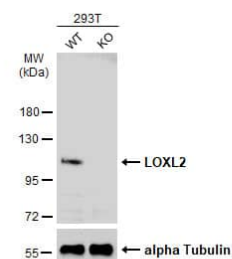
Immunocytochemistry/ Immunofluorescence: Lysyl Oxidase Homolog 2/LOXL2 Antibody [NBP1-32954] - Lysyl Oxidase Homolog 2/LOXL2 antibody detects Lysyl Oxidase Homolog 2/LOXL2 protein at nucleus by immunofluorescent analysis. Sample: HeLa cells were fixed in 4% paraformaldehyde at RT for 15 min. Green: Lysyl Oxidase Homolog 2/LOXL2 stained by Lysyl Oxidase Homolog 2/LOXL2 antibody (NBP1-32954) diluted at 1:500. Red: alpha Tubulin, a cytoskeleton marker, stained by alpha Tubulin antibody [GT114] diluted at 1:1000.



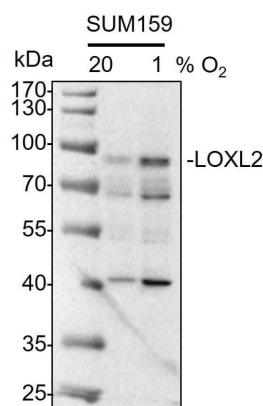
Western Blot: Lysyl Oxidase Homolog 2/LOXL2 Antibody [NBP1-32954]
 - Wild-type (WT) and LOXL2 knockout (KO) HeLa cell extracts (30 ug) were separated by 7.5% SDS-PAGE, and the membrane was blotted with LOXL2 antibody diluted at 1:500. The HRP-conjugated anti-rabbit IgG antibody was used to detect the primary antibody.



Western Blot: Lysyl Oxidase Homolog 2/LOXL2 Antibody [NBP1-32954]
 - Wild-type (WT) and LOXL2 knockout (KO) HeLa cell extracts (30 ug) were separated by 7.5% SDS-PAGE, and the membrane was blotted with LOXL2 antibody diluted at 1:500. The HRP-conjugated anti-rabbit IgG antibody was used to detect the primary antibody.



Whole cell lysates from SUM159 cells exposed to either 20% or 1% O₂ for 48 hours were loaded with 50 ug/lane. 10% SDS-PAGE. LOXL2 Antibody (NBP1-32954) was used for primary antibody: 1:1000, 4 \times , overnight. Image from a verified customer review.



Publications

Jiang C, Wang M, Yao W et al. Comprehensive Analysis on Prognosis and Immune Infiltration of Lysyl Oxidase Family Members in Pancreatic Adenocarcinoma With Experimental Verification *Frontiers in Molecular Biosciences* 2022-04-01 [PMID: 35433829] (Western Blot, Human)

Bharti A, Urs AB, Kumar P. Significance of HIF-1 α Expression and LOXL-2 Localization in Progression of Oral Squamous Cell Carcinoma *Asian Pacific Journal of Cancer Prevention* 2021-02-01 [PMID: 33639646] (Western Blot, Human)

Cetin M, Saatci O, Rezaeian AH et al. A highly potent bi-thiazole inhibitor of LOX rewires collagen architecture and enhances chemoresponse in triple-negative breast cancer *Cell Chem Biol* 2024-07-09 [PMID: 39043186]

Yun H, Im HJ, Choe C, Roh S Effect of LOXL2 on metastasis through remodeling of the cell surface matrix in non-small cell lung cancer cells *Gene* 2022-04-25 [PMID: 35483499] (WB, Human)

Novotny T, Eckhardt A, Doubkova M et al. The possible role of hypoxia in the affected tissue of relapsed clubfoot *Scientific reports* 2022-03-15 [PMID: 35292718] (IF/IHC, Human)

Yamamoto A, Saito T, Hosoya T et al. Therapeutic effect of cyclin-dependent kinase 4/6 inhibitor on dermal fibrosis in murine models of systemic sclerosis *Arthritis & rheumatology (Hoboken, N.J.)* 2021-12-09 [PMID: 34882985]

Torres S, Garcia-Palmero I, et al. LOXL2 Is Highly Expressed in Cancer-Associated Fibroblasts and Associates to Poor Colon Cancer Survival. *Clin Cancer Res* 2015-11-01 [PMID: 26206869] (IF/IHC, Human)

Querol J Maintaining oxidized H3 in heterochromatin is required for the oncogenic capacity of triple-negative breast cancer cells *bioRxiv* 2020-01-01 (KD, WB, Human)

Cebria-Costa JP, Pascual-Reguant L, Gonzalez-Perez A et al. LOXL2-mediated H3K4 oxidation reduces chromatin accessibility in triple-negative breast cancer cells *Oncogene* 2019-08-28 [PMID: 31462706] (WB, Human)

Jeong YJ, Park SH, Mun SH et al. Association between lysyl oxidase and fibrotic focus in relation with inflammation in breast cancer *Oncology Letters* [PMID: 29434955] (IHC-P, Human)

Tjin G, White ES, Faiz A et al. Lysyl oxidases regulate fibrillar collagen remodelling in idiopathic pulmonary fibrosis. *Dis Model Mech* 2017-11-01 [PMID: 29125826] (IHC-P, Human)

Sato F, Seino-Sudo R, Okada M et al. Lysyl Oxidase Enhances the Deposition of Tropoelastin through the Catalysis of Tropoelastin Molecules on the Cell Surface. *Biol. Pharm. Bull.* 2017-10-02 [PMID: 28966236] (WB)

More publications at <http://www.novusbio.com/NBP1-32954>



Novus Biologicals USA

10730 E. Briarwood Avenue
Centennial, CO 80112
USA
Phone: 303.730.1950
Toll Free: 1.888.506.6887
Fax: 303.730.1966
nb-customerservice@bio-techne.com

Bio-Techne Canada

21 Canmotor Ave
Toronto, ON M8Z 4E6
Canada
Phone: 905.827.6400
Toll Free: 855.668.8722
Fax: 905.827.6402
canada.inquires@bio-techne.com

Bio-Techne Ltd

19 Barton Lane
Abingdon Science Park
Abingdon, OX14 3NB, United Kingdom
Phone: (44) (0) 1235 529449
Free Phone: 0800 37 34 15
Fax: (44) (0) 1235 533420
info.EMEA@bio-techne.com

General Contact Information

www.novusbio.com
Technical Support: nb-technical@bio-techne.com
Orders: nb-customerservice@bio-techne.com
General: novus@novusbio.com

Products Related to NBP1-32954

HAF008	Goat anti-Rabbit IgG Secondary Antibody [HRP]
NB7160	Goat anti-Rabbit IgG (H+L) Secondary Antibody [HRP]
NBP2-24891	Rabbit IgG Isotype Control
NBP2-56739PEP	Lysyl Oxidase Homolog 2/LOXL2 Recombinant Protein Antigen

Limitations

This product is for research use only and is not approved for use in humans or in clinical diagnosis. Primary Antibodies are guaranteed for 1 year from date of receipt.

For more information on our 100% guarantee, please visit www.novusbio.com/guarantee

Earn gift cards/discounts by submitting a review: www.novusbio.com/reviews/submit/NBP1-32954

Earn gift cards/discounts by submitting a publication using this product:
www.novusbio.com/publications

