

# Product Datasheet

## LRPPRC Antibody NBP1-32744

Unit Size: 100 ul

Aliquot and store at -20C or -80C. Avoid freeze-thaw cycles.

[www.novusbio.com](http://www.novusbio.com)



[technical@novusbio.com](mailto:technical@novusbio.com)

### Publications: 1

Protocols, Publications, Related Products, Reviews, Research Tools and Images at:  
[www.novusbio.com/NBP1-32744](http://www.novusbio.com/NBP1-32744)

Updated 10/23/2024 v.20.1

Earn rewards for product  
reviews and publications.

Submit a publication at [www.novusbio.com/publications](http://www.novusbio.com/publications)

Submit a review at [www.novusbio.com/reviews/destination/NBP1-32744](http://www.novusbio.com/reviews/destination/NBP1-32744)



**NBP1-32744**

LRPPRC Antibody

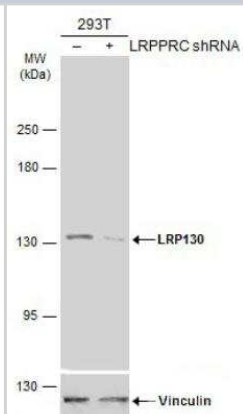
Product Information	
Unit Size	100 ul
Concentration	Concentrations vary lot to lot. See vial label for concentration. If unlisted please contact technical services.
Storage	Aliquot and store at -20C or -80C. Avoid freeze-thaw cycles.
Clonality	Polyclonal
Preservative	0.025% Proclin 300
Isotype	IgG
Purity	Antigen Affinity-purified
Buffer	PBS (pH 7), 20% Glycerol, 1% BSA
Target Molecular Weight	158 kDa

Product Description	
Host	Rabbit
Gene ID	10128
Gene Symbol	LRPPRC
Species	Human, Mouse, Rat
Immunogen	Recombinant protein encompassing a sequence within the center region of human LRPPRC. The exact sequence is proprietary.

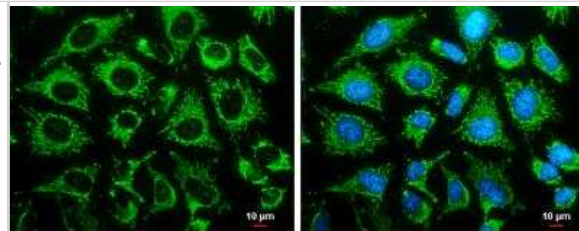
Product Application Details	
Applications	Western Blot, Immunocytochemistry/ Immunofluorescence, Immunohistochemistry, Immunohistochemistry-Paraffin
Recommended Dilutions	Western Blot 1:1000-1:10000, Immunohistochemistry 1:100-1:1000, Immunocytochemistry/ Immunofluorescence 1:100-1:1000, Immunohistochemistry-Paraffin 1:100-1:1000

**Images**

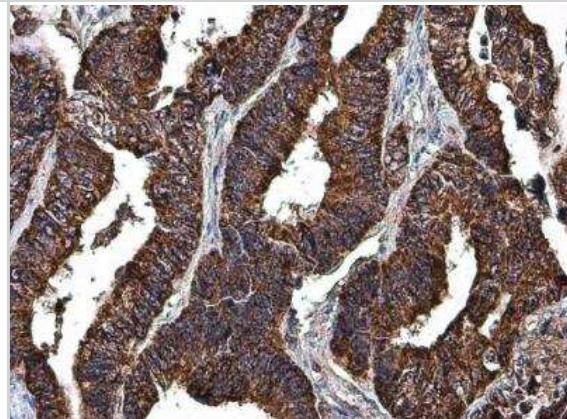
Western Blot: LRPPRC Antibody [NBP1-32744] - Non-transfected (-) and transfected (+) 293T whole cell extracts (30 ug) were separated by 5% SDS-PAGE, and the membrane was blotted with LRPPRC antibody diluted at 1:5000. HRP-conjugated anti-rabbit IgG antibody was used to detect the primary antibody.



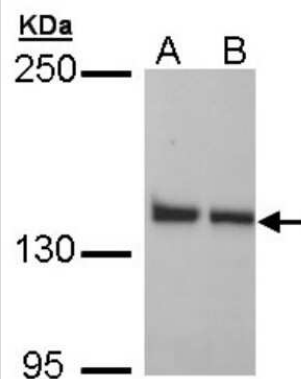
Immunocytochemistry/Immunofluorescence: LRPPRC Antibody [NBP1-32744] - HeLa cells were fixed in 4% paraformaldehyde at RT for 15 min. Green: LRP130 protein stained by LRP130 antibody [N3C2], Internal diluted at 1:500. Blue: Hoechst 33342 staining. Scale bar = 10  $\mu$ m.



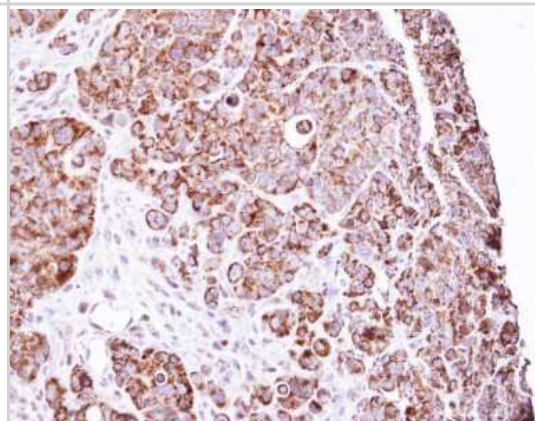
Immunohistochemistry-Paraffin: LRPPRC Antibody [NBP1-32744] - Paraffin-embedded human colon cancer. LRP130 antibody [N3C2], Internal diluted at 1:100



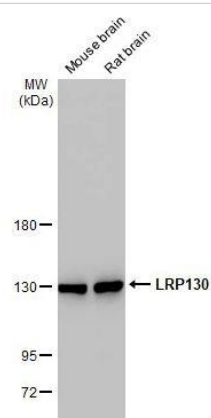
Western Blot: LRPPRC Antibody [NBP1-32744] - Sample (30  $\mu$ g of whole cell lysate) A: H1299 B: HeLa 5% SDS PAGE, antibody diluted at 1:1000.



Immunohistochemistry-Paraffin: LRPPRC Antibody [NBP1-32744] - Paraffin-embedded SW480 Xenograft, using antibody at 1:100 dilution.



Western Blot: LRPPRC Antibody [NBP1-32744] -Various tissue extracts (50 ug) were separated by 5% SDS-PAGE, and the membrane was blotted with LRP130 antibody [N3C2], Internal diluted at 1:1000. The HRP-conjugated anti-rabbit IgG antibody (NBP2-19301) was used to detect the primary antibody.



## Publications

Kasashima K, Sumitani M, Endo H et al. Human mitochondrial transcription factor A is required for the segregation of mitochondrial DNA in cultured cells. *Exp Cell Res* 2011-01-01 [PMID: 20955698] (ICC/IF, Human)



### **Novus Biologicals USA**

10730 E. Briarwood Avenue  
Centennial, CO 80112  
USA  
Phone: 303.730.1950  
Toll Free: 1.888.506.6887  
Fax: 303.730.1966  
nb-customerservice@bio-techne.com

### **Bio-Techne Canada**

21 Canmotor Ave  
Toronto, ON M8Z 4E6  
Canada  
Phone: 905.827.6400  
Toll Free: 855.668.8722  
Fax: 905.827.6402  
canada.inquires@bio-techne.com

### **Bio-Techne Ltd**

19 Barton Lane  
Abingdon Science Park  
Abingdon, OX14 3NB, United Kingdom  
Phone: (44) (0) 1235 529449  
Free Phone: 0800 37 34 15  
Fax: (44) (0) 1235 533420  
info.EMEA@bio-techne.com

### **General Contact Information**

www.novusbio.com  
Technical Support: nb-technical@bio-techne.com  
Orders: nb-customerservice@bio-techne.com  
General: novus@novusbio.com

### **Products Related to NBP1-32744**

---

HAF008	Goat anti-Rabbit IgG Secondary Antibody [HRP]
NB7160	Goat anti-Rabbit IgG (H+L) Secondary Antibody [HRP]
NBP2-24891	Rabbit IgG Isotype Control
NBP2-38300PEP	LRPPRC Recombinant Protein Antigen

---

### **Limitations**

This product is for research use only and is not approved for use in humans or in clinical diagnosis. Primary Antibodies are guaranteed for 1 year from date of receipt.

For more information on our 100% guarantee, please visit [www.novusbio.com/guarantee](http://www.novusbio.com/guarantee)

Earn gift cards/discounts by submitting a review: [www.novusbio.com/reviews/submit/NBP1-32744](http://www.novusbio.com/reviews/submit/NBP1-32744)

Earn gift cards/discounts by submitting a publication using this product:  
[www.novusbio.com/publications](http://www.novusbio.com/publications)

