

Product Datasheet

SUCLG1 Antibody - BSA Free

NBP1-32728

Unit Size: 100 ul

Aliquot and store at -20C or -80C. Avoid freeze-thaw cycles.

www.novusbio.com



technical@novusbio.com

Reviews: 1 Publications: 2

Protocols, Publications, Related Products, Reviews, Research Tools and Images at:
www.novusbio.com/NBP1-32728

Updated 9/9/2025 v.20.1

Earn rewards for product reviews and publications.

Submit a publication at www.novusbio.com/publications

Submit a review at www.novusbio.com/reviews/destination/NBP1-32728



NBP1-32728

SUCLG1 Antibody - BSA Free

Product Information

Unit Size	100 ul
Concentration	Concentrations vary lot to lot. See vial label for concentration. If unlisted please contact technical services.
Storage	Aliquot and store at -20C or -80C. Avoid freeze-thaw cycles.
Clonality	Polyclonal
Preservative	0.025% Proclin 300
Isotype	IgG
Purity	Antigen Affinity-purified
Buffer	PBS, 20% Glycerol
Target Molecular Weight	36 kDa

Product Description

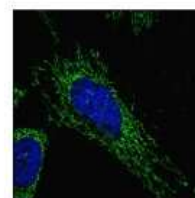
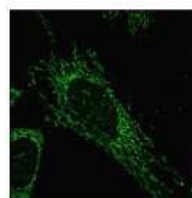
Description	Novus Biologicals Rabbit SUCLG1 Antibody - BSA Free (NBP1-32728) is a polyclonal antibody validated for use in IHC, WB, ICC/IF and IP. Anti-SUCLG1 Antibody: Cited in 2 publications. All Novus Biologicals antibodies are covered by our 100% guarantee.
Host	Rabbit
Gene ID	8802
Gene Symbol	SUCLG1
Species	Human, Mouse, Rat
Reactivity Notes	Zebrafish (83%), Pig (86%), Chicken (87%).
Immunogen	Full length human SUCLG1 Recombinant protein.

Product Application Details

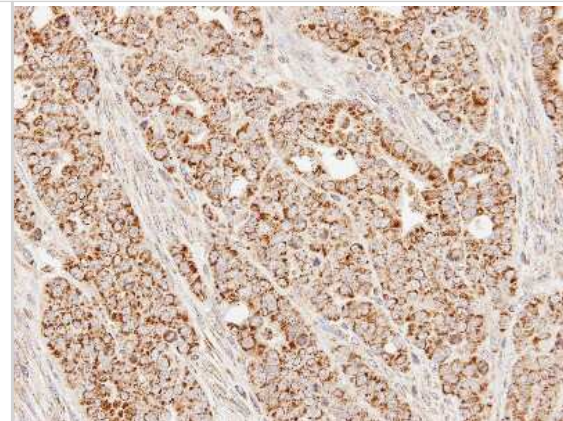
Applications	Western Blot, Immunohistochemistry-Paraffin, Immunocytochemistry/Immunofluorescence, Immunohistochemistry, Immunoprecipitation
Recommended Dilutions	Western Blot 1:1000-1:10000, Immunohistochemistry 1:100-1:1000, Immunocytochemistry/ Immunofluorescence 1:100-1:1000, Immunoprecipitation Assay dependent, Immunohistochemistry-Paraffin 1:100-1:1000

Images

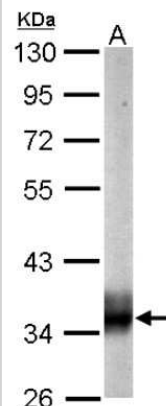
Immunocytochemistry/Immunofluorescence: SUCLG1 Antibody [NBP1-32728] - Sample: HeLa cells were fixed in 2% paraformaldehyde/culture medium at 37C for 30 min. Green: SUCLG1 protein stained by SUCLG1 antibody diluted at 1:500. Blue: Hoechst 33342 staining.



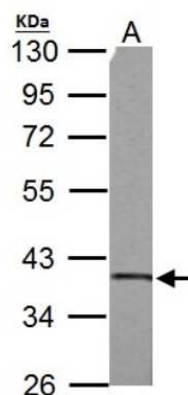
Immunohistochemistry-Paraffin: SUCLG1 Antibody [NBP1-32728] - N87 xenograft, using SUCLG1 antibody at 1:100 dilution. Antigen Retrieval: Trilogy™ (EDTA based, pH 8.0) buffer, 15min.



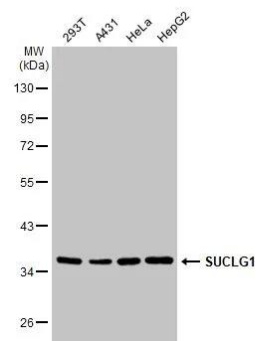
Western Blot: SUCLG1 Antibody [NBP1-32728] - Sample (20 ug of whole cell lysate) A: mouse brain 10% SDS PAGE; antibody diluted at 1:10000.



Western Blot: SUCLG1 Antibody [NBP1-32728] - 50 ug rat brain lysate/extract 10 % SDS-PAGE gel, antibody dilution 1:3000.



Western Blot: SUCLG1 Antibody [NBP1-32728] - Various whole cell extracts (30 ug) were separated by 10% SDS-PAGE, and the membrane was blotted with SUCLG1 antibody (NBP1-32728) diluted at 1:1000. The HRP-conjugated anti-rabbit IgG antibody was used to detect the primary antibody.



Publications

Yiyi Chen, Laimdota Zizmare, Victor Calbiague, Lan Wang, Shirley Yu, Fritz W Herberg, Oliver Schmachtenberg, Francois Paquet-Durand, Christoph Trautwein, Zhongjie Fu, Lois EH Smith Retinal metabolism displays evidence for uncoupling of glycolysis and oxidative phosphorylation via Cori-, Cahill-, and mini-Krebs-cycle eLife 2024-05-13 [PMID: 38739438]

Boese AC, Kang J, Hwang JS et al. Succinyl-CoA ligase ADP-forming subunit beta promotes stress granule assembly to regulate redox and drive cancer metastasis Proceedings of the National Academy of Sciences of the United States of America 2023-06-06 [PMID: 37253003]





Novus Biologicals USA

10730 E. Briarwood Avenue
Centennial, CO 80112
USA
Phone: 303.730.1950
Toll Free: 1.888.506.6887
Fax: 303.730.1966
nb-customerservice@bio-techne.com

Bio-Techne Canada

21 Canmotor Ave
Toronto, ON M8Z 4E6
Canada
Phone: 905.827.6400
Toll Free: 855.668.8722
Fax: 905.827.6402
canada.inquires@bio-techne.com

Bio-Techne Ltd

19 Barton Lane
Abingdon Science Park
Abingdon, OX14 3NB, United Kingdom
Phone: (44) (0) 1235 529449
Free Phone: 0800 37 34 15
Fax: (44) (0) 1235 533420
info.EMEA@bio-techne.com

General Contact Information

www.novusbio.com
Technical Support: nb-technical@bio-techne.com
Orders: nb-customerservice@bio-techne.com
General: novus@novusbio.com

Products Related to NBP1-32728

HAF008	Goat anti-Rabbit IgG Secondary Antibody [HRP]
NB7160	Goat anti-Rabbit IgG (H+L) Secondary Antibody [HRP]
NBP2-24891	Rabbit IgG Isotype Control
NBP2-38318PEP	SUCLG1 Recombinant Protein Antigen

Limitations

This product is for research use only and is not approved for use in humans or in clinical diagnosis. Primary Antibodies are guaranteed for 1 year from date of receipt.

For more information on our 100% guarantee, please visit www.novusbio.com/guarantee

Earn gift cards/discounts by submitting a review: www.novusbio.com/reviews/submit/NBP1-32728

Earn gift cards/discounts by submitting a publication using this product:
www.novusbio.com/publications

