

Product Datasheet

LIMCH1 Antibody - BSA Free

NBP1-32614

Unit Size: 100 ul

Aliquot and store at -20C or -80C. Avoid freeze-thaw cycles.

www.novusbio.com



technical@novusbio.com

Protocols, Publications, Related Products, Reviews, Research Tools and Images at:
www.novusbio.com/NBP1-32614

Updated 2/21/2025 v.20.1

Earn rewards for product
reviews and publications.

Submit a publication at www.novusbio.com/publications

Submit a review at www.novusbio.com/reviews/destination/NBP1-32614



NBP1-32614

LIMCH1 Antibody - BSA Free

Product Information

Unit Size	100 ul
Concentration	Concentrations vary lot to lot. See vial label for concentration. If unlisted please contact technical services.
Storage	Aliquot and store at -20C or -80C. Avoid freeze-thaw cycles.
Clonality	Polyclonal
Preservative	0.025% Proclin 300
Isotype	IgG
Purity	Antigen Affinity-purified
Buffer	PBS (pH 7), 20% Glycerol
Target Molecular Weight	122 kDa

Product Description

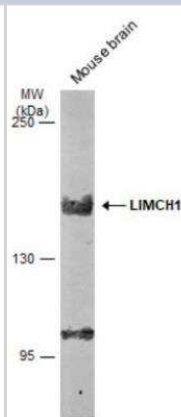
Host	Rabbit
Gene ID	22998
Gene Symbol	LIMCH1
Species	Human, Mouse
Reactivity Notes	Bovine (86%).
Immunogen	Recombinant protein encompassing a sequence within the C-terminus region of human LIMCH1. The exact sequence is proprietary.

Product Application Details

Applications	Western Blot, Immunocytochemistry/ Immunofluorescence, Immunohistochemistry, Immunohistochemistry-Paraffin
Recommended Dilutions	Western Blot 1:500-1:3000, Immunohistochemistry 1:100-1:1000, Immunocytochemistry/ Immunofluorescence, Immunohistochemistry-Paraffin 1:100-1:1000

Images

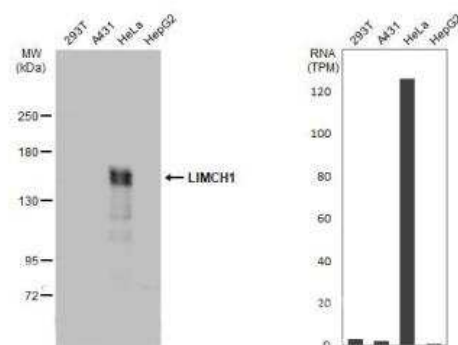
Western Blot: LIMCH1 Antibody [NBP1-32614] - (30 ug) were separated by 5% SDS-PAGE, and the membrane was blotted with LIMCH1 antibody [C2C3], C-term diluted at 1:3000. The HRP-conjugated anti-rabbit IgG antibody (NBP2-19301) was used to detect the primary antibody.



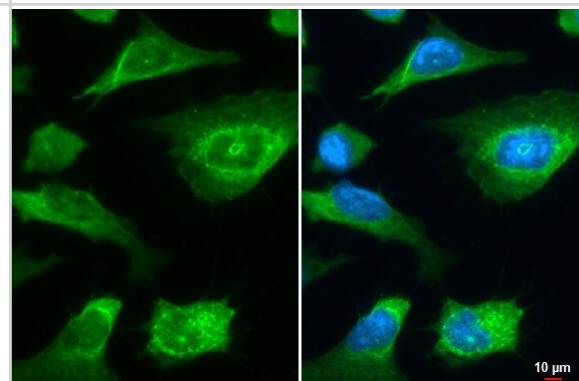
Immunohistochemistry-Paraffin: LIMCH1 Antibody [NBP1-32614] - Paraffin-embedded A549 xenograft, using antibody at 1:500 dilution.



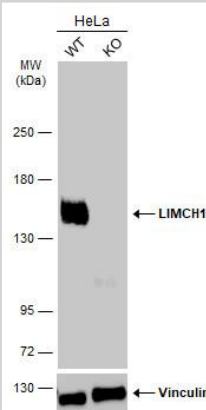
Western Blot: LIMCH1 Antibody [NBP1-32614] - Various whole cell extracts (30 ug) were separated by 5% SDS-PAGE, and the membrane was blotted with LIMCH1 antibody diluted at 1:3000. HRP-conjugated anti-rabbit IgG antibody was used to detect the primary antibody.



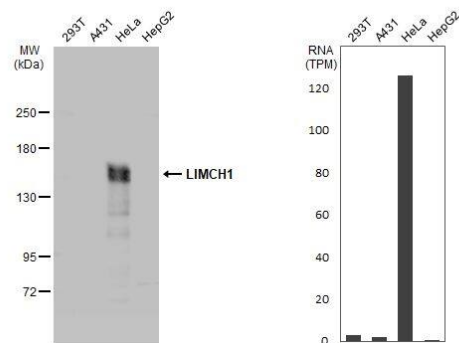
Immunocytochemistry/ Immunofluorescence: LIMCH1 Antibody [NBP1-32614] - LIMCH1 antibody [C2C3], C-term detects LIMCH1 protein at stress fiber by immunofluorescent analysis. Sample: HeLa cells were fixed in ice-cold MeOH for 5 min. Green: LIMCH1 stained by LIMCH1 antibody [C2C3], C-term (NBP1-32614) diluted at 1:500.



Western Blot: LIMCH1 Antibody [NBP1-32614] - Wild-type (WT) and LIMCH1 knockout (KO) HeLa cell extracts (30 ug) were separated by 5% SDS-PAGE, and the membrane was blotted with LIMCH1 antibody [C2C3], C-term diluted at 1:3000. The HRP-conjugated anti-rabbit IgG antibody was used to detect the primary antibody.



Western Blot: LIMCH1 Antibody [NBP1-32614] - Various whole cell extracts (30 ug) were separated by 5% SDS-PAGE, and the membrane was blotted with LIMCH1 antibody [C2C3], C-term diluted at 1:3000. The HRP-conjugated anti-rabbit IgG antibody was used to detect the primary antibody. Corresponding RNA expression data for the same cell lines are based on Human Protein Atlas program.





Novus Biologicals USA

10730 E. Briarwood Avenue
Centennial, CO 80112
USA
Phone: 303.730.1950
Toll Free: 1.888.506.6887
Fax: 303.730.1966
nb-customerservice@bio-techne.com

Bio-Techne Canada

21 Canmotor Ave
Toronto, ON M8Z 4E6
Canada
Phone: 905.827.6400
Toll Free: 855.668.8722
Fax: 905.827.6402
canada.inquires@bio-techne.com

Bio-Techne Ltd

19 Barton Lane
Abingdon Science Park
Abingdon, OX14 3NB, United Kingdom
Phone: (44) (0) 1235 529449
Free Phone: 0800 37 34 15
Fax: (44) (0) 1235 533420
info.EMEA@bio-techne.com

General Contact Information

www.novusbio.com
Technical Support: nb-technical@bio-techne.com
Orders: nb-customerservice@bio-techne.com
General: novus@novusbio.com

Products Related to NBP1-32614

HAF008	Goat anti-Rabbit IgG Secondary Antibody [HRP]
NB7160	Goat anti-Rabbit IgG (H+L) Secondary Antibody [HRP]
NBP2-24891	Rabbit IgG Isotype Control
H00022998-P01-10ug	Recombinant Human LIMCH1 GST (N-Term) Protein

Limitations

This product is for research use only and is not approved for use in humans or in clinical diagnosis. Primary Antibodies are guaranteed for 1 year from date of receipt.

For more information on our 100% guarantee, please visit www.novusbio.com/guarantee

Earn gift cards/discounts by submitting a review: www.novusbio.com/reviews/submit/NBP1-32614

Earn gift cards/discounts by submitting a publication using this product:
www.novusbio.com/publications

