

Product Datasheet

Albumin Antibody NBP1-32458

Unit Size: 0.1 ml

Aliquot and store at -20C or -80C. Avoid freeze-thaw cycles.

www.novusbio.com



technical@novusbio.com

Publications: 13

Protocols, Publications, Related Products, Reviews, Research Tools and Images at:
www.novusbio.com/NBP1-32458

Updated 10/23/2024 v.20.1

**Earn rewards for product
reviews and publications.**

Submit a publication at www.novusbio.com/publications

Submit a review at www.novusbio.com/reviews/destination/NBP1-32458



NBP1-32458

Albumin Antibody

Product Information

Unit Size	0.1 ml
Concentration	Concentrations vary lot to lot. See vial label for concentration. If unlisted please contact technical services.
Storage	Aliquot and store at -20C or -80C. Avoid freeze-thaw cycles.
Clonality	Polyclonal
Preservative	0.025% Proclin 300
Isotype	IgG
Purity	Antigen Affinity-purified
Buffer	PBS, 1% BSA, 20% Glycerol
Target Molecular Weight	69 kDa

Product Description

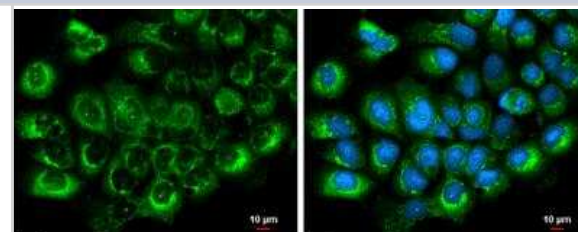
Host	Rabbit
Gene ID	213
Gene Symbol	ALB
Species	Human, Mouse, Rat, Canine, Feline
Reactivity Notes	Cat (100%), Rabbit (82%).
Immunogen	Recombinant protein encompassing a sequence within the C-terminus region of human Albumin. The exact sequence is proprietary.

Product Application Details

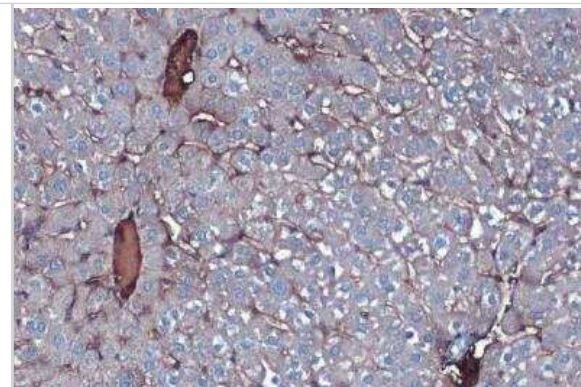
Applications	Western Blot, Immunocytochemistry/ Immunofluorescence, Immunohistochemistry, Immunohistochemistry-Frozen, Immunohistochemistry-Paraffin, In vitro assay
Recommended Dilutions	Western Blot 1:500-1:100000, Immunohistochemistry Assay dependent, Immunocytochemistry/ Immunofluorescence 1:100-1:1000, Immunohistochemistry-Paraffin Assay dependent, Immunohistochemistry-Frozen 1:100-1:1000, In vitro assay Assay dependent

Images

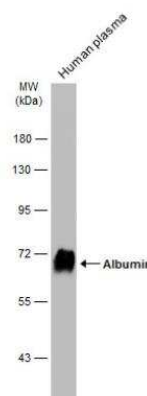
Immunocytochemistry/Immunofluorescence: Albumin Antibody [NBP1-32458] - A431 cells were fixed in ice-cold MeOH for 5 min. Green: Albumin protein stained by Albumin antibody diluted at 1:500. Blue: Hoechst 33342 staining. Scale bar = 10 μ m.



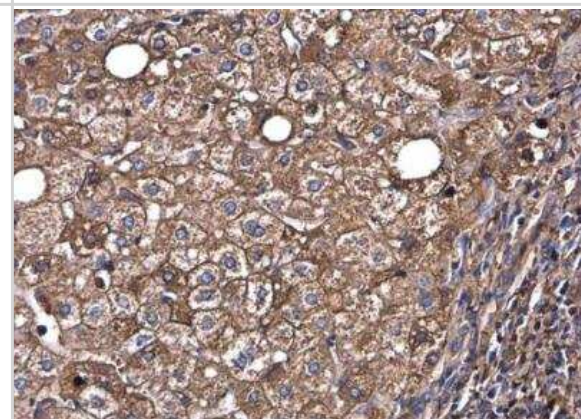
Immunohistochemistry-Paraffin: Albumin Antibody [NBP1-32458] - Mouse liver. Albumin stained by Albumin antibody diluted at 1:1000. Antigen Retrieval: Citrate buffer, pH 6.0, 15 min.



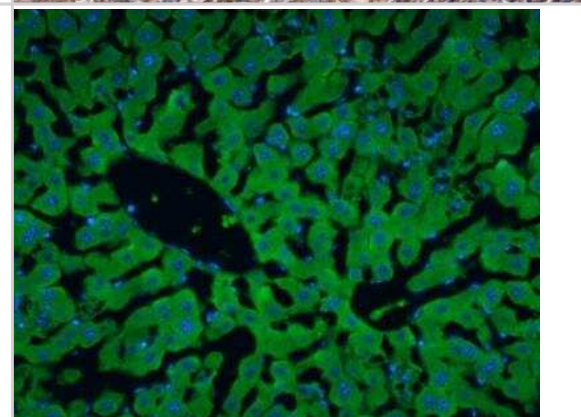
Western Blot: Albumin Antibody [NBP1-32458] - Human plasma (1 ug) was separated by 7.5% SDS-PAGE, and the membrane was blotted with Albumin antibody diluted at 1:100000. The HRP-conjugated anti-rabbit IgG antibody (NBP2-19301) was used to detect the primary antibody.



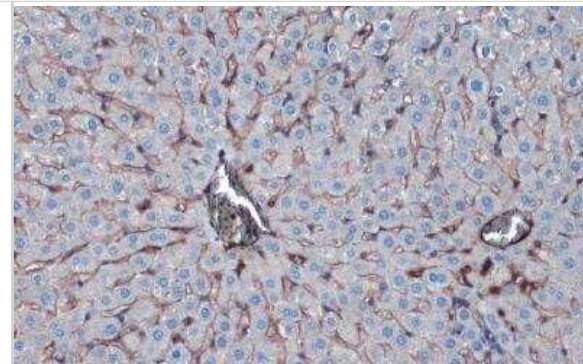
Immunohistochemistry-Paraffin: Albumin Antibody [NBP1-32458] - Human hepatocellular carcinoma. Albumin antibody diluted at 1:500. Antigen Retrieval: Citrate buffer, pH 6.0, 15 min.



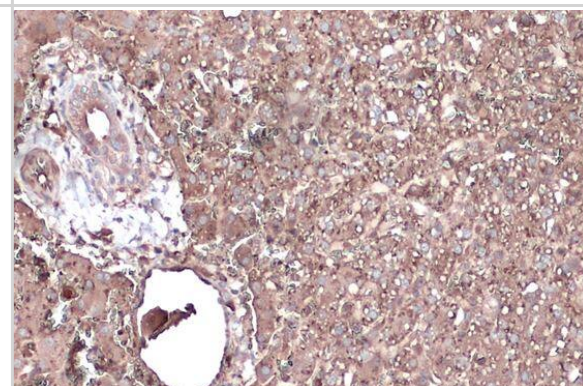
Immunohistochemistry-Frozen: Albumin Antibody [NBP1-32458] - Albumin antibody detects Albumin protein at cytoplasm in rat liver by immunohistochemical analysis. Sample: Frozen section of rat liver. Albumin antibody diluted at 1:200.



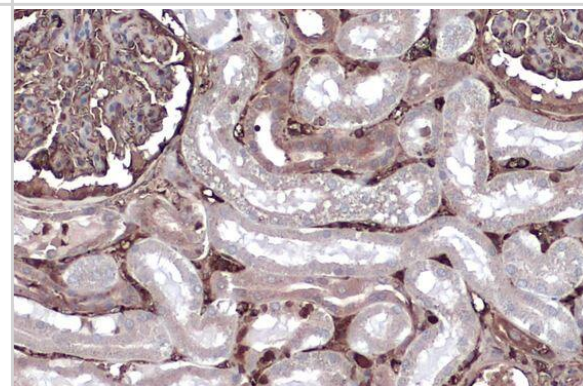
Immunohistochemistry-Paraffin: Albumin Antibody [NBP1-32458] - Rat liver. Albumin stained by Albumin antibody diluted at 1:1000. Antigen Retrieval: Citrate buffer, pH 6.0, 15 min.



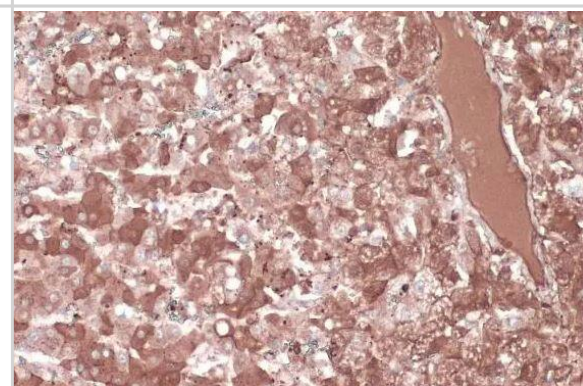
Immunohistochemistry-Paraffin: Albumin Antibody [NBP1-32458] - Dog liver. Albumin stained by Albumin antibody diluted at 1:500. Antigen Retrieval: Citrate buffer, pH 6.0, 15 min



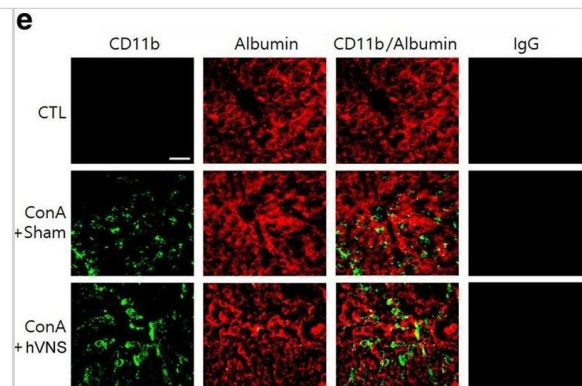
Immunohistochemistry-Paraffin: Albumin Antibody [NBP1-32458] - Dog kidney. Albumin stained by Albumin antibody diluted at 1:500. Antigen Retrieval: Citrate buffer, pH 6.0, 15 min



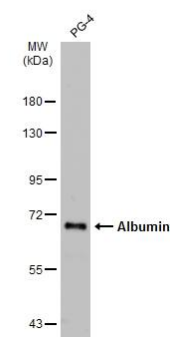
Immunohistochemistry-Paraffin: Albumin Antibody [NBP1-32458] - Cat liver. Albumin stained by Albumin antibody diluted at 1:500. Antigen Retrieval: Citrate buffer, pH 6.0, 15 min



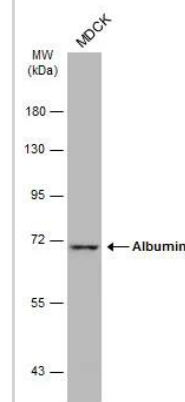
Immunocytochemistry/ Immunofluorescence: Albumin Antibody [NBP1-32458] - Immunofluorescence localization of TNF- α , IL-1 β & IL-6 in the liver tissue of animals treated with ConA or ConA + hVNS. a–c Representative immunofluorescence images of TNF- α , IL-1 β , & IL-6 that were merged with CD11b. Signal intensities of TNF- α , IL-1 β , & IL-6 from 4 to 6 images were averaged per each animal & compared among experimental groups (n = 3 independent experiments). One-way ANOVA with Tukey post hoc is shown. *p < 0.05, **p < 0.01, ***p < 0.001. d Enlarged views of TNF- α , IL-1 β , & IL-6 signals merged with CD11b & Hoechst nuclear staining images in the liver sections from ConA + hVNS animal. e Immunofluorescence staining of liver tissue with anti-CD11b & anti-albumin antibodies. Representative immunofluorescence images using normal mouse IgG antibody instead of primary antibodies followed by reaction with fluorescein-goat anti-mouse IgG antibody are shown in the last column. Scale bars in a–c, d, & e are 100 μ m, 10 μ m, & 50 μ m respectively Image collected & cropped by CiteAb from the following publication (<https://pubmed.ncbi.nlm.nih.gov/33272194>), licensed under a CC-BY license. Not internally tested by Novus Biologicals.



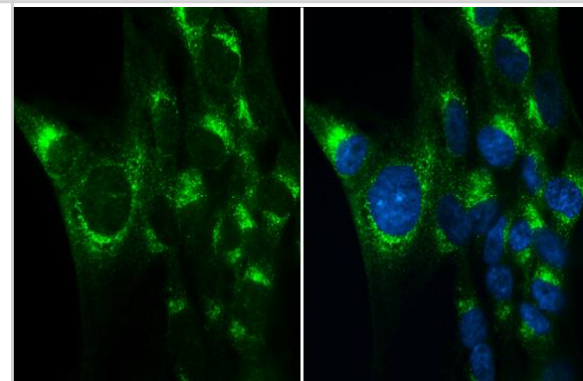
Western Blot: Albumin Antibody [NBP1-32458] - PG-4 whole cell extract (30 μ g) was separated by 7.5% SDS-PAGE, and the membrane was blotted with Albumin antibody (NBP1-32458) diluted at 1:1000. The HRP-conjugated anti-rabbit IgG antibody was used to detect the primary antibody.



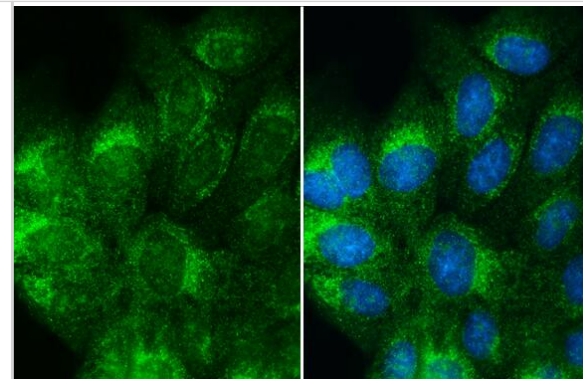
Western Blot: Albumin Antibody [NBP1-32458] - Whole cell extract (30 μ g) was separated by 7.5% SDS-PAGE, and the membrane was blotted with Albumin antibody (NBP1-32458) diluted at 1:1000. The HRP-conjugated anti-rabbit IgG antibody was used to detect the primary antibody, and the signal was developed with Trident ECL plus-Enhanced.



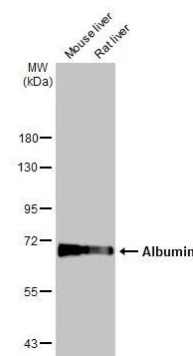
Immunocytochemistry/ Immunofluorescence: Albumin Antibody [NBP1-32458] - Albumin antibody detects Albumin protein at cytoplasm by immunofluorescent analysis. Sample: PG-4 cells were fixed in 4% paraformaldehyde at RT for 15 min. Green: Albumin stained by Albumin antibody (NBP1-32458) diluted at 1:500. Blue: Hoechst 33342 staining.



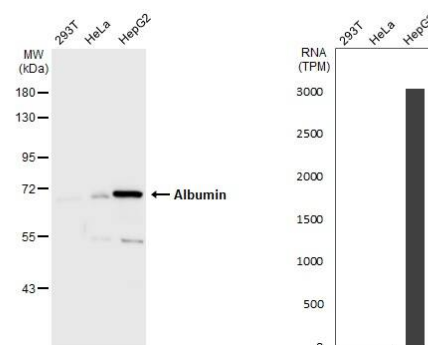
Immunocytochemistry/ Immunofluorescence: Albumin Antibody [NBP1-32458] - Albumin antibody detects Albumin protein at cytoplasm by immunofluorescent analysis. Sample: MDCK cells were fixed in 4% paraformaldehyde at RT for 15 min. Green: Albumin stained by Albumin antibody (NBP1-32458) diluted at 1:500. Blue: Hoechst 33342 staining.



Western Blot: Albumin Antibody [NBP1-32458] - Various tissue extracts (50 ug) were separated by 7.5% SDS-PAGE, and the membrane was blotted with Albumin antibody (NBP1-32458) diluted at 1:1000. The HRP-conjugated anti-rabbit IgG antibody was used to detect the primary antibody.



Western Blot: Albumin Antibody [NBP1-32458] - Various whole cell extracts (30 ug) were separated by 7.5% SDS-PAGE, and the membrane was blotted with Albumin antibody diluted at 1:1000. The HRP-conjugated anti-rabbit IgG antibody was used to detect the primary antibody. Corresponding RNA expression data for the same cell lines are based on Human Protein Atlas program.



Publications

Ohene-Nyako M, Persons AL, Napier TC Hippocampal blood-brain barrier of methamphetamine self-administering HIV-1 transgenic rats Eur. J. Neurosci. 2020-07-29 [PMID: 32725911]

Liu J, Dou G, Zhao W et al. Exosomes derived from impaired liver aggravate alveolar bone loss via shuttle of Fasn in type 2 diabetes mellitus Bioactive materials 2024-03-01 [PMID: 38024229] (WB, Mouse)

Hou X, Yin S, Ren R et al. Myeloid-Cell-Specific IL-6 Signaling Promotes MicroRNA-223-Enriched Exosome Production to Attenuate NAFLD-Associated Fibrosis Hepatology 2021-07-01 [PMID: 33236445]

Chitrangi S, Vaity P, Jamdar A et al. Derivation of Breast Cancer Patient derived Human Induced Pluripotent Stem Cell Line (YBLi006-A) with FANC-BRCA Gene Mutations: A Cell Resource for Precision Medicine Stem Cell Research 2023-05-01 [PMID: 37290137] (Immunocytochemistry/ Immunofluorescence, Human)

Yishuang L, Jinyu K, Jia L et al Hepatocytic AP-1 and STAT3 contribute to chemotaxis in alphanaphthylisothiocyanate-induced cholestatic liver injury Toxicology Letters 2022-11-01 [PMID: 36460194]

Kawakatsu-Hatada Y, Murata S, Mori A, et al. Serous Membrane Detachment with Ultrasonic Homogenizer Improves Engraftment of Fetal Liver to Liver Surface in a Rat Cirrhosis Model Int J Mol Sci 2021-11-13 [PMID: 34769019]

Rojas A, Abreu-Melon J, Wang S, Dingledine R Time-dependent neuropathology in rats following organophosphate-induced status epilepticus Neurotoxicology 2022-04-29 [PMID: 35500718] (WB, Rat)

Jun JH, Park S, Kim JY et al. Combination Therapy of Placenta-Derived Mesenchymal Stem Cells with WKY/Mv Promotes Hepatic Function in a Rat Model with Hepatic Disease via Vascular Remodeling Cells 2022-01-11 [PMID: 35053347] (WB)

Jo, B G, Kim, S H Et al. Vagal afferent fibers contribute to the anti-inflammatory reactions by vagus nerve stimulation in concanavalin A model of hepatitis in rats. Mol Med 2020-12-03 [PMID: 33272194] (WB, Mouse)

Legroux Laurine, Moratalla Ana Carmena, Laurent Cyril et al. NKG2D and Its Ligand MULT1 Contribute to Disease Progression in a Mouse Model of Multiple Sclerosis. Frontiers in Immunology 2019-02-06 [PMID: 30787931] (WB, Mouse)

Ardalani H, Sengupta S, Harms V et al. 3-D Culture and Endothelial Cells Improve Maturity of Human Pluripotent Stem Cell-Derived Hepatocytes Acta Biomater 2019-07-27 [PMID: 31362140] (ICC/IF, Human)

Gulati NM, Pitek AS, Czapar AE et al. The in vivo fates of plant viral nanoparticles camouflaged using self-proteins: overcoming immune recognition. J Mater Chem B 2018-04-21 [PMID: 30294445]

More publications at <http://www.novusbio.com/NBP1-32458>





Novus Biologicals USA

10730 E. Briarwood Avenue
Centennial, CO 80112
USA
Phone: 303.730.1950
Toll Free: 1.888.506.6887
Fax: 303.730.1966
nb-customerservice@bio-techne.com

Bio-Techne Canada

21 Canmotor Ave
Toronto, ON M8Z 4E6
Canada
Phone: 905.827.6400
Toll Free: 855.668.8722
Fax: 905.827.6402
canada.inquires@bio-techne.com

Bio-Techne Ltd

19 Barton Lane
Abingdon Science Park
Abingdon, OX14 3NB, United Kingdom
Phone: (44) (0) 1235 529449
Free Phone: 0800 37 34 15
Fax: (44) (0) 1235 533420
info.EMEA@bio-techne.com

General Contact Information

www.novusbio.com
Technical Support: nb-technical@bio-
techne.com
Orders: nb-customerservice@bio-techne.com
General: novus@novusbio.com

Products Related to NBP1-32458

HAF008	Goat anti-Rabbit IgG Secondary Antibody [HRP]
NB7160	Goat anti-Rabbit IgG (H+L) Secondary Antibody [HRP]
NBP2-24891	Rabbit IgG Isotype Control
NBP1-96881	Albumin Native Protein

Limitations

This product is for research use only and is not approved for use in humans or in clinical diagnosis. Primary Antibodies are guaranteed for 1 year from date of receipt.

For more information on our 100% guarantee, please visit www.novusbio.com/guarantee

Earn gift cards/discounts by submitting a review: www.novusbio.com/reviews/submit/NBP1-32458

Earn gift cards/discounts by submitting a publication using this product:
www.novusbio.com/publications

