

# Product Datasheet

## CSB Antibody - BSA Free NBP1-32405

Unit Size: 0.1 mg

Aliquot and store at -20C or -80C. Avoid freeze-thaw cycles.

[www.novusbio.com](http://www.novusbio.com)



[technical@novusbio.com](mailto:technical@novusbio.com)

Protocols, Publications, Related Products, Reviews, Research Tools and Images at:  
[www.novusbio.com/NBP1-32405](http://www.novusbio.com/NBP1-32405)

Updated 2/21/2025 v.20.1

Earn rewards for product  
reviews and publications.

Submit a publication at [www.novusbio.com/publications](http://www.novusbio.com/publications)

Submit a review at [www.novusbio.com/reviews/destination/NBP1-32405](http://www.novusbio.com/reviews/destination/NBP1-32405)



**NBP1-32405**

CSB Antibody - BSA Free

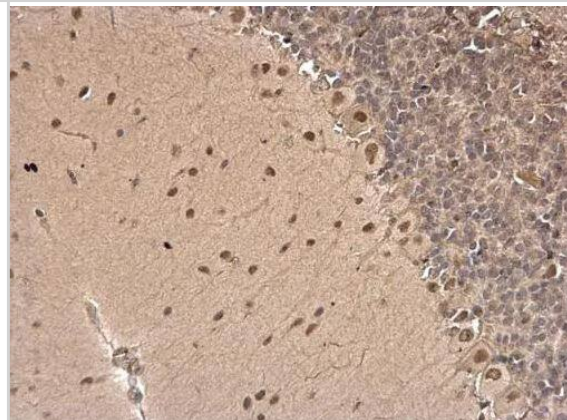
Product Information	
Unit Size	0.1 mg
Concentration	0.69 mg/ml
Storage	Aliquot and store at -20C or -80C. Avoid freeze-thaw cycles.
Clonality	Polyclonal
Preservative	0.025% Proclin 300
Isotype	IgG
Purity	Antigen Affinity-purified
Buffer	PBS (pH 7), 20% Glycerol
Target Molecular Weight	168 kDa

Product Description	
Description	Store as concentrated solution. Centrifuge briefly prior to opening vial. For short-term storage (1-2 weeks), store at 4°C. For long-term storage, aliquot and store at -20°C or below. Avoid multiple freeze-thaw cycles.
Host	Rabbit
Gene ID	2074
Gene Symbol	ERCC6
Species	Human, Mouse, Rat
Immunogen	Recombinant protein encompassing a sequence within the center region of human CSB. The exact sequence is proprietary.

Product Application Details	
Applications	Western Blot, Immunohistochemistry-Paraffin, Immunocytochemistry/Immunofluorescence, Immunohistochemistry, Immunoprecipitation
Recommended Dilutions	Western Blot 1:500-1:3000, Immunohistochemistry, Immunocytochemistry/Immunofluorescence 1:100-1:1000, Immunoprecipitation 1:100-1:500, Immunohistochemistry-Paraffin 1:100-1:1000

**Images**

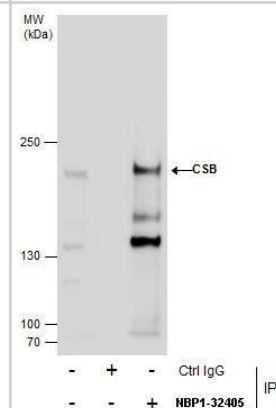
Immunohistochemistry-Paraffin: Rabbit Polyclonal CSB Antibody [NBP1-32405] - CSB antibody [N2C1] detects CSB protein at nucleus on rat hind brain by immunohistochemical analysis. Sample: Paraffin-embedded rat hind brain. CSB antibody [N2C1], dilution: 1:500.



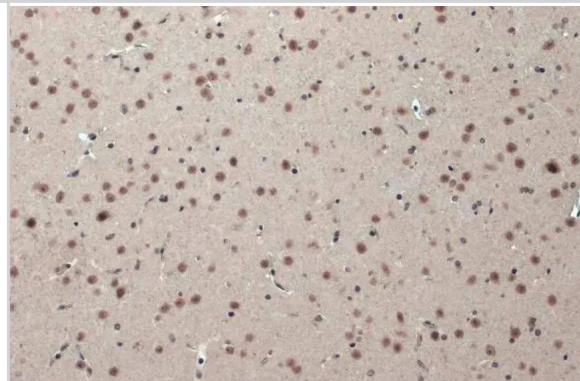
**Immunohistochemistry-Paraffin:** Rabbit Polyclonal CSB Antibody [NBP1-32405] - CSB antibody [N2C1] detects CSB protein at nucleus by immunohistochemical analysis. Sample: Paraffin-embedded rat brain. CSB stained by CSB antibody [N2C1], diluted at 1:500. Antigen Retrieval: Citrate buffer, pH 6.0, 15 min



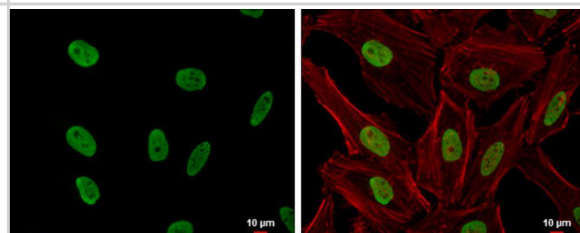
**Immunoprecipitation:** Rabbit Polyclonal CSB Antibody [NBP1-32405] - Immunoprecipitation of CSB protein from 293T whole cell extracts using 5 ug of CSB antibody [N2C1]. Western blot analysis was performed using CSB antibody [N2C1]. Anti-Rabbit IgG was used as a secondary reagent.



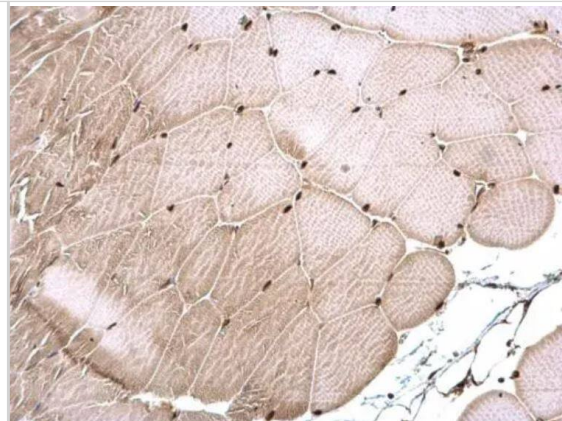
**Immunohistochemistry-Paraffin:** Rabbit Polyclonal CSB Antibody [NBP1-32405] - CSB antibody [N2C1] detects CSB protein at nucleus by immunohistochemical analysis. Sample: Paraffin-embedded mouse brain. CSB stained by CSB antibody [N2C1], diluted at 1:500. Antigen Retrieval: Citrate buffer, pH 6.0, 15 min



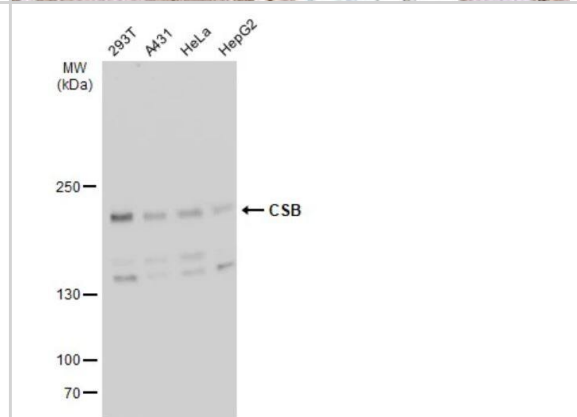
**Immunocytochemistry/Immunofluorescence:** Rabbit Polyclonal CSB Antibody [NBP1-32405] - CSB antibody [N2C1] detects CSB protein at nucleus by immunofluorescent analysis. Sample: HeLa cells were fixed in 4% paraformaldehyde at RT for 15 min. Green: CSB protein stained by CSB antibody [N2C1] diluted at 1:500. Red: phalloidin, a cytoskeleton marker, diluted at 1:200. Blue: Hoechst 33342 staining. Scale bar = 10 um.



Immunohistochemistry-Paraffin: Rabbit Polyclonal CSB Antibody [NBP1-32405] - CSB antibody [N2C1] detects CSB protein at nucleus on mouse muscle by immunohistochemical analysis. Sample: Paraffin-embedded mouse muscle. CSB antibody [N2C1], dilution: 1:500. Antigen Retrieval: Trilogy (TM) (EDTA based, pH 8.0) buffer, 15min



Western Blot: Rabbit Polyclonal CSB Antibody [NBP1-32405] - Various whole cell extracts (30 ug) were separated by 5% SDS-PAGE, and the membrane was blotted with CSB antibody [N2C1] diluted at 1:1000. The HRP-conjugated anti-rabbit IgG antibody was used to detect the primary antibody.





### **Novus Biologicals USA**

10730 E. Briarwood Avenue  
Centennial, CO 80112  
USA  
Phone: 303.730.1950  
Toll Free: 1.888.506.6887  
Fax: 303.730.1966  
nb-customerservice@bio-techne.com

### **Bio-Techne Canada**

21 Canmotor Ave  
Toronto, ON M8Z 4E6  
Canada  
Phone: 905.827.6400  
Toll Free: 855.668.8722  
Fax: 905.827.6402  
canada.inquires@bio-techne.com

### **Bio-Techne Ltd**

19 Barton Lane  
Abingdon Science Park  
Abingdon, OX14 3NB, United Kingdom  
Phone: (44) (0) 1235 529449  
Free Phone: 0800 37 34 15  
Fax: (44) (0) 1235 533420  
info.EMEA@bio-techne.com

### **General Contact Information**

www.novusbio.com  
Technical Support: nb-technical@bio-techne.com  
Orders: nb-customerservice@bio-techne.com  
General: novus@novusbio.com

### **Products Related to NBP1-32405**

---

HAF008	Goat anti-Rabbit IgG Secondary Antibody [HRP]
NB7160	Goat anti-Rabbit IgG (H+L) Secondary Antibody [HRP]
NBP2-24891	Rabbit IgG Isotype Control
NBP2-68917PEP	CSB Recombinant Protein Antigen

---

### **Limitations**

This product is for research use only and is not approved for use in humans or in clinical diagnosis. Primary Antibodies are guaranteed for 1 year from date of receipt.

For more information on our 100% guarantee, please visit [www.novusbio.com/guarantee](http://www.novusbio.com/guarantee)

Earn gift cards/discounts by submitting a review: [www.novusbio.com/reviews/submit/NBP1-32405](http://www.novusbio.com/reviews/submit/NBP1-32405)

Earn gift cards/discounts by submitting a publication using this product:  
[www.novusbio.com/publications](http://www.novusbio.com/publications)

