

# Product Datasheet

## Dishevelled-2 Antibody - BSA Free NBP1-32388

Unit Size: 0.1 ml

Aliquot and store at -20C or -80C. Avoid freeze-thaw cycles.

[www.novusbio.com](http://www.novusbio.com)



[technical@novusbio.com](mailto:technical@novusbio.com)

### Publications: 1

Protocols, Publications, Related Products, Reviews, Research Tools and Images at:  
[www.novusbio.com/NBP1-32388](http://www.novusbio.com/NBP1-32388)

Updated 9/25/2025 v.20.1

Earn rewards for product  
reviews and publications.

Submit a publication at [www.novusbio.com/publications](http://www.novusbio.com/publications)

Submit a review at [www.novusbio.com/reviews/destination/NBP1-32388](http://www.novusbio.com/reviews/destination/NBP1-32388)



**NBP1-32388**

Dishevelled-2 Antibody - BSA Free

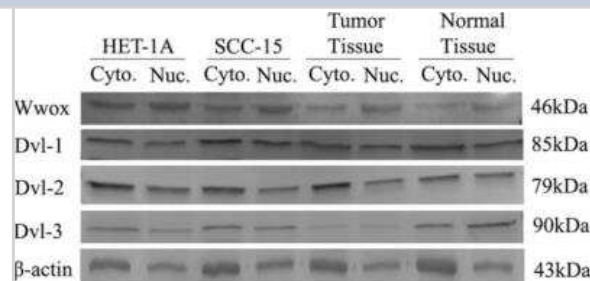
| Product Information            |  |
|--------------------------------|--|
| <b>Unit Size</b>               | 0.1 ml   |
| <b>Concentration</b>           | Concentrations vary lot to lot. See vial label for concentration. If unlisted please contact technical services. |
| <b>Storage</b>                 | Aliquot and store at -20C or -80C. Avoid freeze-thaw cycles.   |
| <b>Clonality</b>               | Polyclonal   |
| <b>Preservative</b>            | 0.01% Thimerosal   |
| <b>Isotype</b>                 | IgG  |
| <b>Purity</b>                  | Antigen Affinity-purified  |
| <b>Buffer</b>                  | 0.1M Tris, 0.1M Glycine, 10% Glycerol  |
| <b>Target Molecular Weight</b> | 79 kDa   |

| Product Description     |  |
|-------------------------|--|
| <b>Description</b>      | Novus Biologicals Rabbit Dishevelled-2 Antibody - BSA Free (NBP1-32388) is a polyclonal antibody validated for use in IHC and WB. Anti-Dishevelled-2 Antibody: Cited in 1 publication. All Novus Biologicals antibodies are covered by our 100% guarantee. |
| <b>Host</b>             | Rabbit   |
| <b>Gene ID</b>          | 1856   |
| <b>Gene Symbol</b>      | DVL2   |
| <b>Species</b>          | Human, Mouse, Zebrafish  |
| <b>Reactivity Notes</b> | Zebrafish (80%), Xenopus laevis (85%).   |
| <b>Immunogen</b>        | Recombinant protein encompassing a sequence within the center region of human Dishevelled-2. The exact sequence is proprietary.  |

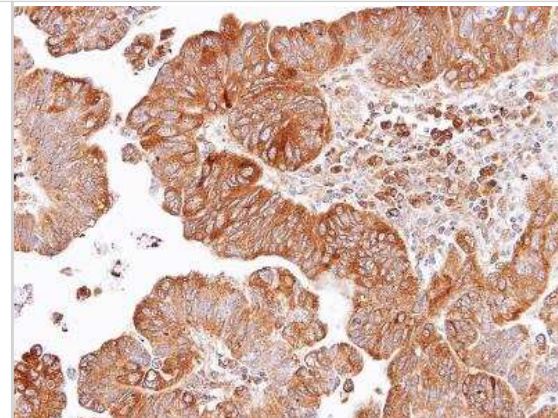
| Product Application Details  |   |
|------------------------------|---|
| <b>Applications</b>          | Western Blot, Immunohistochemistry-Paraffin, Immunohistochemistry, Immunohistochemistry-Frozen  |
| <b>Recommended Dilutions</b> | Western Blot 1:500-1:3000, Immunohistochemistry 1:100-1:1000, Immunohistochemistry-Paraffin 1:100-1:1000, Immunohistochemistry-Frozen Assay dependent |

**Images**

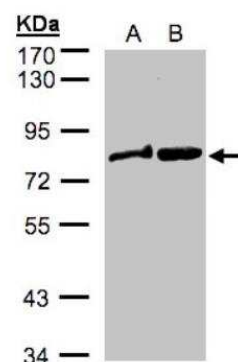
Western Blot: Dishevelled-2 Antibody [NBP1-32388] - Intracellular distribution of Wwox (dilution 1:1000, AF6399), Dvl-1 (dilution 1:700, NBP1-58318), Dvl-2 (Dishevelled-2, dilution 1:1000,) and Dvl-3 (dilution 1:200, NBP2-24674) proteins in HET-1A and SCC-15 cell lines. Image collected and cropped by CiteAb from the following publication ([www.jcancer.org/v11p4030.htm](http://www.jcancer.org/v11p4030.htm)) licensed under a CC-BY license.



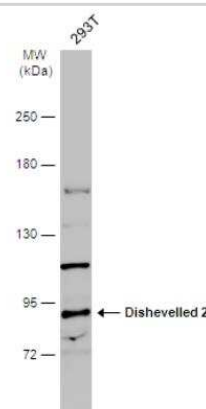
Immunohistochemistry-Paraffin: Dishevelled-2 Antibody [NBP1-32388] - Paraffin-embedded lung SCC, using antibody at 1:100 dilution.



Western Blot: Dishevelled-2 Antibody [NBP1-32388] - Sample(30 ug whole cell lysate)A: MOLT4 )B: Raji 7. 5% SDS PAGE, antibody diluted at 1:500.



Western Blot: Dishevelled-2 Antibody [NBP1-32388] - Whole cell extract (50 ug) was separated by 5% SDS-PAGE, and the membrane was blotted with Dishevelled-2 antibody Internal diluted at 1:500. The HRP-conjugated anti-rabbit IgG antibody was used to detect the primary antibody, and the signal was developed with Trident ECL plus-Enhanced.



Immunohistochemistry: Dishevelled-2 Antibody [NBP1-32388] - cytoplasm in the photoreceptor  
Immunohistochemistry of flat-mounted zebrafish retina using an antibody against Dishevelled-2 antibody [N2C2], Internal (NBP1-32388) at a 1:200 dilution.



## Publications

Celebi A, Orhan C, et al. Silencing of Wwox Increases Nuclear Import of Dvl proteins in Head and Neck Cancer. J Cancer 2020-05-06 [PMID: 32368285] (WB, Human)



### **Novus Biologicals USA**

10730 E. Briarwood Avenue  
Centennial, CO 80112  
USA  
Phone: 303.730.1950  
Toll Free: 1.888.506.6887  
Fax: 303.730.1966  
nb-customerservice@bio-techne.com

### **Bio-Techne Canada**

21 Canmotor Ave  
Toronto, ON M8Z 4E6  
Canada  
Phone: 905.827.6400  
Toll Free: 855.668.8722  
Fax: 905.827.6402  
canada.inquires@bio-techne.com

### **Bio-Techne Ltd**

19 Barton Lane  
Abingdon Science Park  
Abingdon, OX14 3NB, United Kingdom  
Phone: (44) (0) 1235 529449  
Free Phone: 0800 37 34 15  
Fax: (44) (0) 1235 533420  
info.EMEA@bio-techne.com

### **General Contact Information**

www.novusbio.com  
Technical Support: nb-technical@bio-techne.com  
Orders: nb-customerservice@bio-techne.com  
General: novus@novusbio.com

### **Products Related to NBP1-32388**

---

|             |   |
|-------------|---|
| NBP2-33376H | Blue Marker Antibody (6F4-F6) [HRP]                 |
| HAF008      | Goat anti-Rabbit IgG Secondary Antibody [HRP]       |
| NB7160      | Goat anti-Rabbit IgG (H+L) Secondary Antibody [HRP] |
| NBP2-24891  | Rabbit IgG Isotype Control                          |

---

### **Limitations**

This product is for research use only and is not approved for use in humans or in clinical diagnosis. Primary Antibodies are guaranteed for 1 year from date of receipt.

For more information on our 100% guarantee, please visit [www.novusbio.com/guarantee](http://www.novusbio.com/guarantee)

Earn gift cards/discounts by submitting a review: [www.novusbio.com/reviews/submit/NBP1-32388](http://www.novusbio.com/reviews/submit/NBP1-32388)

Earn gift cards/discounts by submitting a publication using this product:  
[www.novusbio.com/publications](http://www.novusbio.com/publications)

