

Product Datasheet

ALDH6A1 Antibody - BSA Free NBP1-32381

Unit Size: 100 ul

Aliquot and store at -20C or -80C. Avoid freeze-thaw cycles.

www.novusbio.com



technical@novusbio.com

Protocols, Publications, Related Products, Reviews, Research Tools and Images at:
www.novusbio.com/NBP1-32381

Updated 2/21/2025 v.20.1

Earn rewards for product
reviews and publications.

Submit a publication at www.novusbio.com/publications

Submit a review at www.novusbio.com/reviews/destination/NBP1-32381



NBP1-32381

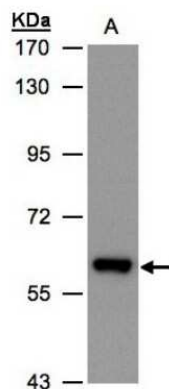
ALDH6A1 Antibody - BSA Free

Product Information	
Unit Size	100 ul
Concentration	Concentrations vary lot to lot. See vial label for concentration. If unlisted please contact technical services.
Storage	Aliquot and store at -20C or -80C. Avoid freeze-thaw cycles.
Clonality	Polyclonal
Preservative	0.01% Thimerosal
Isotype	IgG
Purity	Antigen Affinity-purified
Buffer	0.1M Tris (pH 7), 0.1M Glycine, 10% Glycerol
Target Molecular Weight	58 kDa
Product Description	
Host	Rabbit
Gene ID	4329
Gene Symbol	ALDH6A1
Species	Human, Mouse
Immunogen	Recombinant protein encompassing a sequence within the center region of human ALDH6A1. The exact sequence is proprietary.
Product Application Details	
Applications	Western Blot, Immunohistochemistry, Immunohistochemistry-Paraffin
Recommended Dilutions	Western Blot 1:500-1:3000, Immunohistochemistry 10 - 1:500, Immunohistochemistry-Paraffin 1:100-1:1000

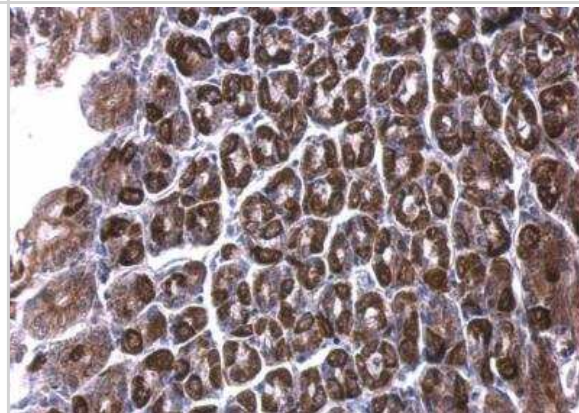


Images

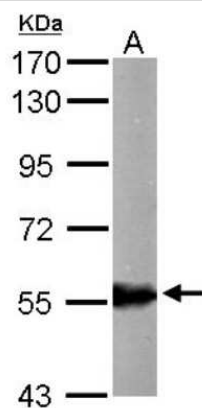
Western Blot: ALDH6A1 Antibody [NBP1-32381] - Sample(30 ug whole cell lysate)A:Hep G2 7. 5% SDS PAGE, antibody diluted at 1:500.



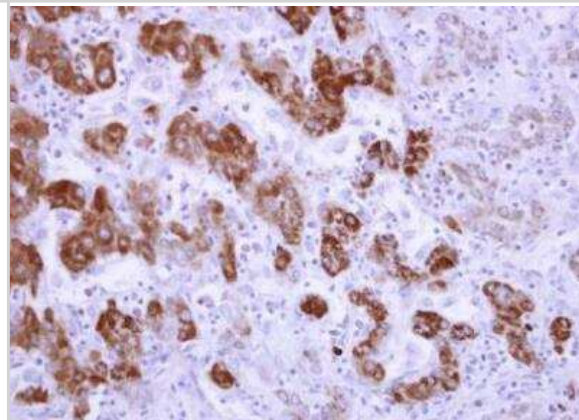
Immunohistochemistry-Paraffin: ALDH6A1 Antibody [NBP1-32381] - ALDH6A1 antibody detects ALDH6A1 protein at cytosol on mouse stomach. Sample: Paraffin-embedded mouse stomach. ALDH6A1 antibody dilution: 1:500.



Western Blot: ALDH6A1 Antibody [NBP1-32381] - Sample (50 ug of whole cell lysate) A: Mouse liver 7. 5% SDS PAGE; antibody diluted at 1:1000.



Immunohistochemistry-Paraffin: ALDH6A1 Antibody [NBP1-32381] - ALDH6A1 antibody detects ALDH6A1 protein at mitochondria on human liver carcinoma. Sample: Paraffin-embedded liver carcinoma. ALDH6A1 antibody dilution: 1:250.





Novus Biologicals USA

10730 E. Briarwood Avenue
Centennial, CO 80112
USA
Phone: 303.730.1950
Toll Free: 1.888.506.6887
Fax: 303.730.1966
nb-customerservice@bio-techne.com

Bio-Techne Canada

21 Canmotor Ave
Toronto, ON M8Z 4E6
Canada
Phone: 905.827.6400
Toll Free: 855.668.8722
Fax: 905.827.6402
canada.inquires@bio-techne.com

Bio-Techne Ltd

19 Barton Lane
Abingdon Science Park
Abingdon, OX14 3NB, United Kingdom
Phone: (44) (0) 1235 529449
Free Phone: 0800 37 34 15
Fax: (44) (0) 1235 533420
info.EMEA@bio-techne.com

General Contact Information

www.novusbio.com
Technical Support: nb-technical@bio-techne.com
Orders: nb-customerservice@bio-techne.com
General: novus@novusbio.com

Products Related to NBP1-32381

HAF008	Goat anti-Rabbit IgG Secondary Antibody [HRP]
NB7160	Goat anti-Rabbit IgG (H+L) Secondary Antibody [HRP]
NBP2-24891	Rabbit IgG Isotype Control
NBP2-52090-0.02mg	Recombinant Human ALDH6A1 His Protein

Limitations

This product is for research use only and is not approved for use in humans or in clinical diagnosis. Primary Antibodies are guaranteed for 1 year from date of receipt.

For more information on our 100% guarantee, please visit www.novusbio.com/guarantee

Earn gift cards/discounts by submitting a review: www.novusbio.com/reviews/submit/NBP1-32381

Earn gift cards/discounts by submitting a publication using this product:
www.novusbio.com/publications

