

Product Datasheet

p27/Kip1 Antibody NBP1-32213

Unit Size: 0.1 ml

Aliquot and store at -20C or -80C. Avoid freeze-thaw cycles.

www.novusbio.com



technical@novusbio.com

Publications: 2

Protocols, Publications, Related Products, Reviews, Research Tools and Images at:
www.novusbio.com/NBP1-32213

Updated 10/23/2024 v.20.1

Earn rewards for product
reviews and publications.

Submit a publication at www.novusbio.com/publications

Submit a review at www.novusbio.com/reviews/destination/NBP1-32213



NBP1-32213

p27/Kip1 Antibody

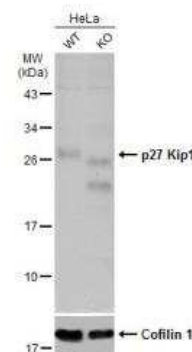
Product Information	
Unit Size	0.1 ml
Concentration	Concentrations vary lot to lot. See vial label for concentration. If unlisted please contact technical services.
Storage	Aliquot and store at -20C or -80C. Avoid freeze-thaw cycles.
Clonality	Polyclonal
Preservative	0.025% Proclin 300
Isotype	IgG
Purity	Antigen Affinity-purified
Buffer	PBS (pH 7), 20% Glycerol, 1% BSA
Target Molecular Weight	22 kDa

Product Description	
Host	Rabbit
Gene ID	1027
Gene Symbol	CDKN1B
Species	Human, Mouse, Rat
Reactivity Notes	Dog (87%), Cat (87%), Pig (84%), Bovine (84%).
Immunogen	Recombinant protein encompassing a sequence within the center region of human p27/Kip1. The exact sequence is proprietary.

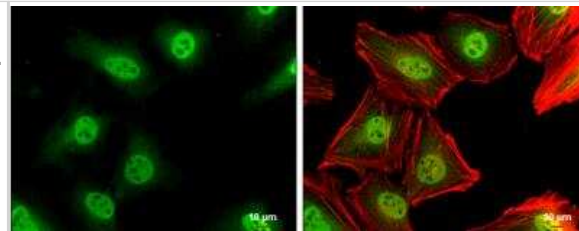
Product Application Details	
Applications	Western Blot, Immunocytochemistry/ Immunofluorescence, Immunohistochemistry, Immunohistochemistry-Frozen, Immunohistochemistry-Paraffin, Immunoprecipitation, Knockout Validated
Recommended Dilutions	Western Blot 1:500-1:3000, Immunohistochemistry 1:100-1:1000, Immunocytochemistry/ Immunofluorescence 1:100-1:1000, Immunoprecipitation 1:100-1:500, Immunohistochemistry-Paraffin 1:100-1:1000, Immunohistochemistry-Frozen 1:100-1:1000, Knockout Validated

Images

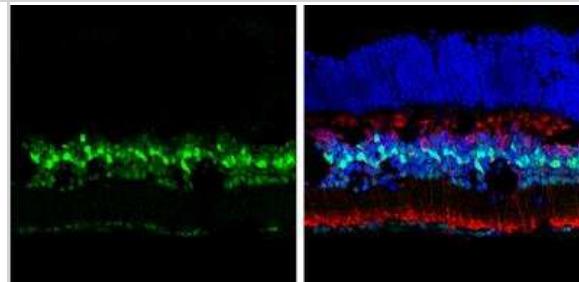
Western Blot: p27/Kip1 Antibody [NBP1-32213] - Wild-type (WT) and p27 Kip1 knockout (KO) HeLa cell extracts (30 ug) were separated by 12% SDS-PAGE, and the membrane was blotted with p27 Kip1 antibody diluted at 1:500. HRP-conjugated anti-rabbit IgG antibody was used to detect the primary antibody.



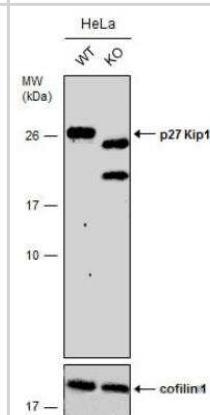
Immunocytochemistry/Immunofluorescence: p27/Kip1 Antibody [NBP1-32213] - HeLa cells were fixed in 4% paraformaldehyde at RT for 15 min. Green: p27 Kip1 protein stained by p27 Kip1 antibody diluted at 1:500. Red: phalloidin, a cytoskeleton marker, diluted at 1:200. Scale bar = 10 μ m.



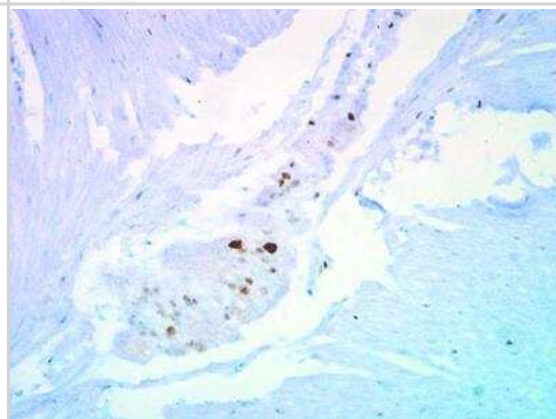
Immunohistochemistry-Frozen: p27/Kip1 Antibody [NBP1-32213] - Frozen sectioned adult mouse retina. Green: p27 Kip1 protein stained by p27 Kip1 antibody diluted at 1:250. Red: Protein kinase C alpha staining. Blue: Fluoroshield with DAPI.



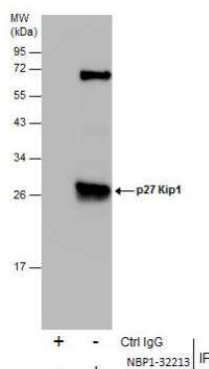
Western Blot: p27/Kip1 Antibody [NBP1-32213] - Wild-type (WT) and p27 Kip1 knockout (KO) HeLa cell extracts (30 μ g) were separated by 12% SDS-PAGE, and the membrane was blotted with p27 Kip1 antibody diluted at 1:500. HRP-conjugated anti-rabbit IgG antibody was used to detect the primary antibody.



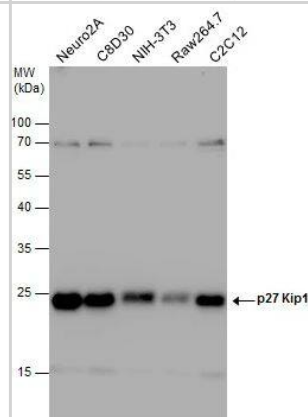
Immunohistochemistry-Paraffin: p27/Kip1 Antibody [NBP1-32213] - Staining of human ulcerative colitis tissue using anti-p27 Kip1 antibody.



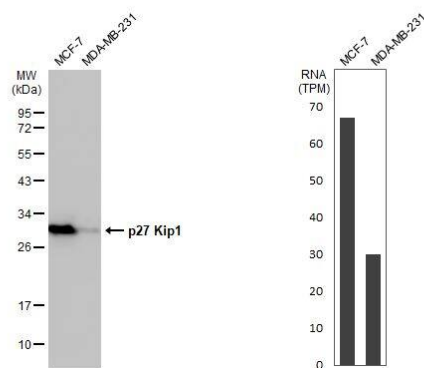
Immunoprecipitation: p27/Kip1 Antibody [NBP1-32213] - Immunoprecipitation of p27 Kip1 protein from MCF-7 whole cell extracts using 5 ug of p27 Kip1 antibody. Western blot analysis was performed using p27 Kip1 antibody. EasyBlot anti-Rabbit IgG was used as a secondary reagent.



Western Blot: p27/Kip1 Antibody [NBP1-32213] - Various whole cell extracts (30 ug) were separated by 12% SDS-PAGE, and the membrane was blotted with p27 Kip1 antibody (NBP1-32213) diluted at 1:1000.



Western Blot: p27/Kip1 Antibody [NBP1-32213] - Various whole cell extracts (30 ug) were separated by 12% SDS-PAGE, and the membrane was blotted with p27 Kip1 antibody diluted at 1:1000. The HRP-conjugated anti-rabbit IgG antibody was used to detect the primary antibody. Corresponding RNA expression data for the same cell lines are based on Human Protein Atlas program.



Publications

Lin M, Fang Z, Lin X et al. TRIM55 inhibits colorectal cancer development via enhancing protein degradation of c-Myc Cancer medicine 2023-05-22 [PMID: 37212463] (WB, Human)

Dickson P, Simanski S, Ngundu JM, Kodadek T Mechanistic Studies of the Multiple Myeloma and Melanoma Cell-Selective Toxicity of the Rpn13-Binding Peptoid KDT-11 Cell Chem Biol 2020-08-26 [PMID: 32857986] (WB)



Novus Biologicals USA

10730 E. Briarwood Avenue
Centennial, CO 80112
USA
Phone: 303.730.1950
Toll Free: 1.888.506.6887
Fax: 303.730.1966
nb-customerservice@bio-techne.com

Bio-Techne Canada

21 Canmotor Ave
Toronto, ON M8Z 4E6
Canada
Phone: 905.827.6400
Toll Free: 855.668.8722
Fax: 905.827.6402
canada.inquires@bio-techne.com

Bio-Techne Ltd

19 Barton Lane
Abingdon Science Park
Abingdon, OX14 3NB, United Kingdom
Phone: (44) (0) 1235 529449
Free Phone: 0800 37 34 15
Fax: (44) (0) 1235 533420
info.EMEA@bio-techne.com

General Contact Information

www.novusbio.com
Technical Support: nb-technical@bio-techne.com
Orders: nb-customerservice@bio-techne.com
General: novus@novusbio.com

Products Related to NBP1-32213

HAF008	Goat anti-Rabbit IgG Secondary Antibody [HRP]
NB7160	Goat anti-Rabbit IgG (H+L) Secondary Antibody [HRP]
NBP2-24891	Rabbit IgG Isotype Control
NBP1-72503-100ug	Recombinant Human p27/Kip1 His Protein

Limitations

This product is for research use only and is not approved for use in humans or in clinical diagnosis. Primary Antibodies are guaranteed for 1 year from date of receipt.

For more information on our 100% guarantee, please visit www.novusbio.com/guarantee

Earn gift cards/discounts by submitting a review: www.novusbio.com/reviews/submit/NBP1-32213

Earn gift cards/discounts by submitting a publication using this product:
www.novusbio.com/publications

