

Product Datasheet

RRM2 Antibody - BSA Free

NBP1-31661

Unit Size: 100 ul

Aliquot and store at -20C or -80C. Avoid freeze-thaw cycles.

www.novusbio.com



technical@novusbio.com

Reviews: 1 Publications: 4

Protocols, Publications, Related Products, Reviews, Research Tools and Images at:
www.novusbio.com/NBP1-31661

Updated 2/21/2025 v.20.1

Earn rewards for product reviews and publications.

Submit a publication at www.novusbio.com/publications

Submit a review at www.novusbio.com/reviews/destination/NBP1-31661



NBP1-31661

RRM2 Antibody - BSA Free

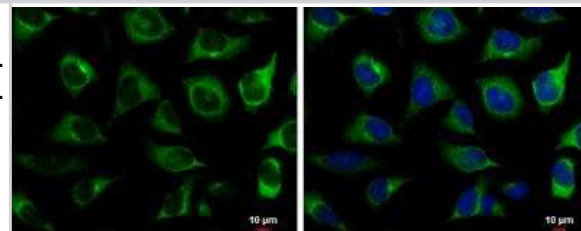
Product Information	
Unit Size	100 ul
Concentration	Concentrations vary lot to lot. See vial label for concentration. If unlisted please contact technical services.
Storage	Aliquot and store at -20C or -80C. Avoid freeze-thaw cycles.
Clonality	Polyclonal
Preservative	0.025% Proclin 300
Isotype	IgG
Purity	Antigen Affinity-purified
Buffer	PBS (pH 7), 20% Glycerol
Target Molecular Weight	45 kDa

Product Description	
Host	Rabbit
Gene ID	6241
Gene Symbol	RRM2
Species	Human, Mouse, Rat, Zebrafish
Immunogen	Recombinant protein encompassing a sequence within the center region of human RRM2. The exact sequence is proprietary.

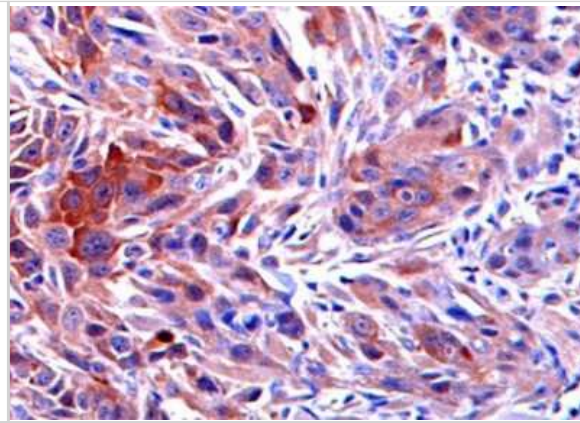
Product Application Details	
Applications	Western Blot, Immunocytochemistry/ Immunofluorescence, Immunohistochemistry, Immunohistochemistry-Paraffin
Recommended Dilutions	Western Blot Assay dependent, Immunohistochemistry 1:100-1:1000, Immunocytochemistry/ Immunofluorescence 1:100-1:1000, Immunohistochemistry-Paraffin 1:100-1:1000

Images

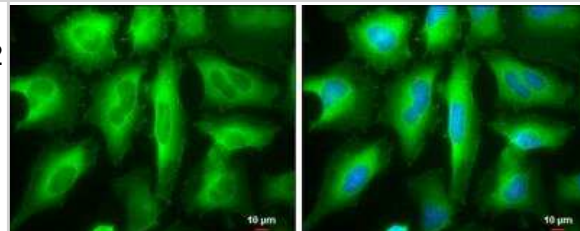
Immunocytochemistry/Immunofluorescence: RRM2 Antibody [NBP1-31661] - HeLa cells were fixed in 4% paraformaldehyde at RT for 15 min. Green: RRM2 protein stained by RRM2 antibody [N1C1] diluted at 1:500. Blue: Hoechst 33342 staining. Scale bar = 10 um.



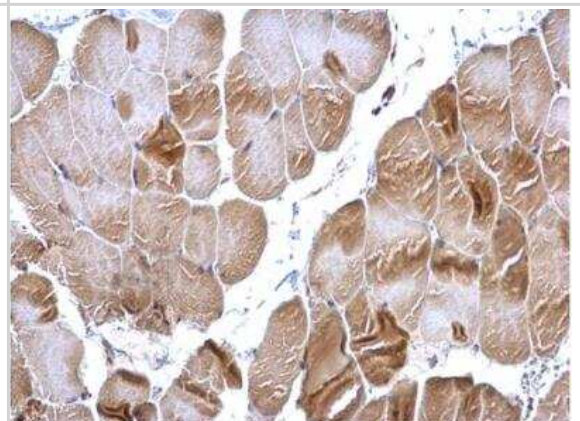
Immunohistochemistry-Paraffin: RRM2 Antibody [NBP1-31661] - Mouse tumor tissues were stained with RRM2 antibody at 1:50 dilution. Image submitted by a verified customer review.



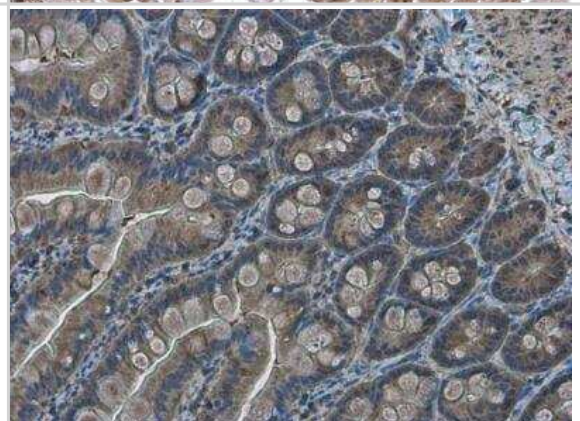
Immunocytochemistry/Immunofluorescence: RRM2 Antibody [NBP1-31661] - HeLa cells were fixed in ice-cold MeOH for 5 min. Green: RRM2 protein stained by RRM2 antibody [N1C1] diluted at 1:1000. Blue: Hoechst 33342 staining. Scale bar = 10 um.



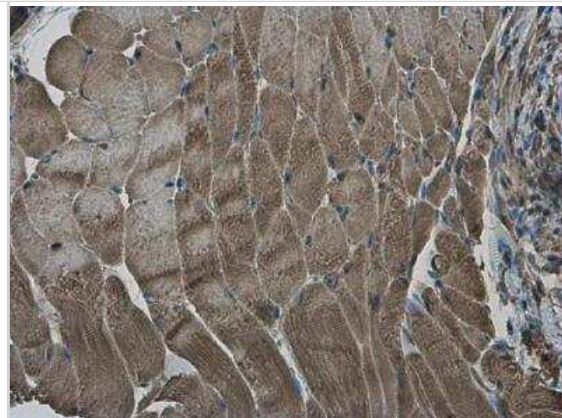
Immunohistochemistry-Paraffin: RRM2 Antibody [NBP1-31661] - Mouse muscle. RRM2 antibody [N1C1] diluted at 1:500. Antigen Retrieval: Trilogy™ (EDTA based, pH 8.0) buffer, 15min.



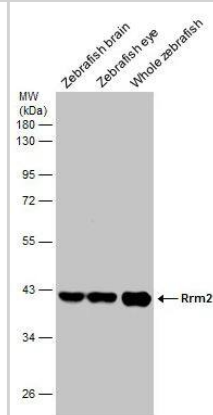
Immunohistochemistry-Paraffin: RRM2 Antibody [NBP1-31661] - Rat intestine. RRM2 antibody [N1C1] diluted at 1:500. Antigen Retrieval: Citrate buffer, pH 6.0, 15 min.



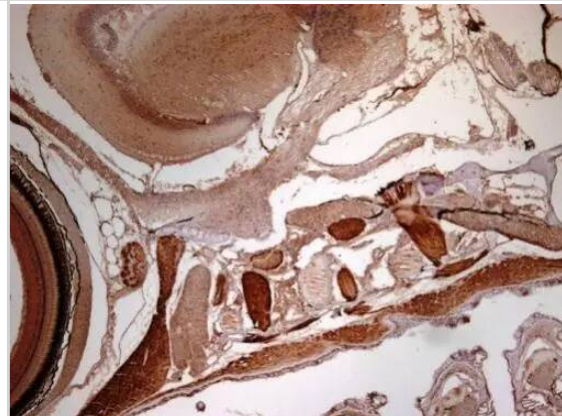
Immunohistochemistry-Paraffin: RRM2 Antibody [NBP1-31661] - Mouse muscle. RRM2 antibody [N1C1] diluted at 1:500. Antigen Retrieval: Citrate buffer, pH 6.0, 15 min.



Western Blot: RRM2 Antibody [NBP1-31661] - Various tissue extracts (30 ug) were separated by 10% SDS-PAGE, and the membrane was blotted with RRM2 antibody [N1C1] diluted at 1:1000.



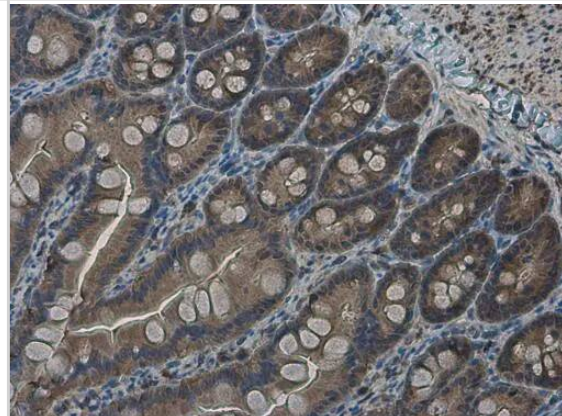
Immunohistochemistry: RRM2 Antibody [NBP1-31661] - Immunohistochemical analysis of paraffin-embedded zebrafish tissue, using RRM2 antibody [N1C1] (NBP1-31661) at 1:300 dilution.



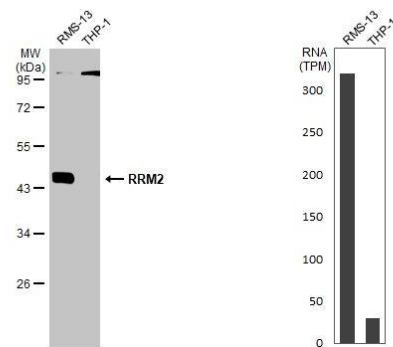
Immunohistochemistry-Paraffin: RRM2 Antibody [NBP1-31661] - RRM2 antibody [N1C1] detects RRM2 protein at cytoplasm in rat intestine by immunohistochemical analysis.

Sample: Paraffin-embedded rat intestine.
RRM2 antibody [N1C1] (NBP1-31661) diluted at 1:500.

Antigen Retrieval: Citrate buffer, pH 6.0, 15 min



Western Blot: RRM2 Antibody [NBP1-31661] - Various whole cell extracts (30 ug) were separated by 10% SDS-PAGE, and the membrane was blotted with RRM2 antibody [N1C1] diluted at 1:1000. The HRP-conjugated anti-rabbit IgG antibody was used to detect the primary antibody. Corresponding RNA expression data for the same cell lines are based on Human Protein Atlas program.



Publications

Chen YH, Chen YC, Lin CC et al. Synergistic Anticancer Effects of Gemcitabine with Pitavastatin on Pancreatic Cancer Cell Line MIA PaCa-2 in vitro and in vivo *Cancer Manag Res* 2020-06-17 [PMID: 32606957]

White JR, Thompson DT, Koch KE et al. AP-2 γ -Mediated Activation of E2F and EZH2 Drives Melanoma Metastasis *Cancer Research* 2021-09-01 [PMID: 34210752] (Western Blot)

Abdel-Rahman MA, Mahfouz M, Habashy HO RRM2 expression in different molecular subtypes of breast cancer and its prognostic significance *Diagnostic pathology* 2022-01-05 [PMID: 34986845] (IHC-P, Human)

Leslie PL, Chao YL, Tsai YH et al. Histone deacetylase 11 inhibition promotes breast cancer metastasis from lymph nodes *Nat Commun* 2019-09-13 [PMID: 31519896] (WB, Human)



Novus Biologicals USA

10730 E. Briarwood Avenue
Centennial, CO 80112
USA
Phone: 303.730.1950
Toll Free: 1.888.506.6887
Fax: 303.730.1966
nb-customerservice@bio-techne.com

Bio-Techne Canada

21 Canmotor Ave
Toronto, ON M8Z 4E6
Canada
Phone: 905.827.6400
Toll Free: 855.668.8722
Fax: 905.827.6402
canada.inquires@bio-techne.com

Bio-Techne Ltd

19 Barton Lane
Abingdon Science Park
Abingdon, OX14 3NB, United Kingdom
Phone: (44) (0) 1235 529449
Free Phone: 0800 37 34 15
Fax: (44) (0) 1235 533420
info.EMEA@bio-techne.com

General Contact Information

www.novusbio.com
Technical Support: nb-technical@bio-techne.com
Orders: nb-customerservice@bio-techne.com
General: novus@novusbio.com

Products Related to NBP1-31661

HAF008	Goat anti-Rabbit IgG Secondary Antibody [HRP]
NB7160	Goat anti-Rabbit IgG (H+L) Secondary Antibody [HRP]
NBP2-24891	Rabbit IgG Isotype Control
NBP1-44468	Recombinant Human RRM2 His Protein

Limitations

This product is for research use only and is not approved for use in humans or in clinical diagnosis. Primary Antibodies are guaranteed for 1 year from date of receipt.

For more information on our 100% guarantee, please visit www.novusbio.com/guarantee

Earn gift cards/discounts by submitting a review: www.novusbio.com/reviews/submit/NBP1-31661

Earn gift cards/discounts by submitting a publication using this product:
www.novusbio.com/publications

