

Product Datasheet

14-3-3 tau/theta Antibody - BSA Free NBP1-31537

Unit Size: 0.1 ml

Aliquot and store at -20C or -80C. Avoid freeze-thaw cycles.

www.novusbio.com



technical@novusbio.com

Protocols, Publications, Related Products, Reviews, Research Tools and Images at:
www.novusbio.com/NBP1-31537

Updated 2/21/2025 v.20.1

Earn rewards for product
reviews and publications.

Submit a publication at www.novusbio.com/publications

Submit a review at www.novusbio.com/reviews/destination/NBP1-31537



NBP1-31537

14-3-3 tau/theta Antibody - BSA Free

Product Information

Unit Size	0.1 ml
Concentration	Concentrations vary lot to lot. See vial label for concentration. If unlisted please contact technical services.
Storage	Aliquot and store at -20C or -80C. Avoid freeze-thaw cycles.
Clonality	Polyclonal
Preservative	0.01% Thimerosal
Isotype	IgG
Purity	Antigen Affinity-purified
Buffer	0.1M Tris (pH 7), 0.1M Glycine, 10% Glycerol

Product Description

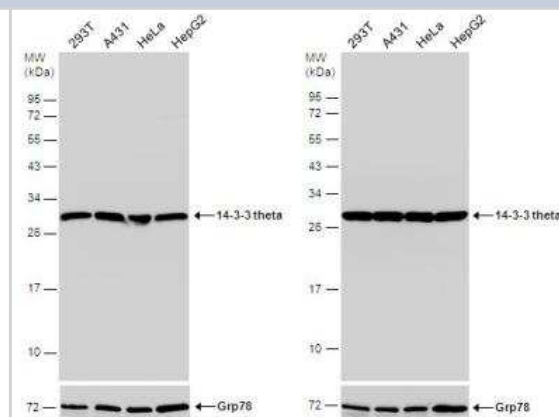
Host	Rabbit
Gene ID	10971
Gene Symbol	YWHAQ
Species	Human, Mouse
Immunogen	Recombinant protein encompassing a sequence within the center region of human 14-3-3 tau/theta. The exact sequence is proprietary.

Product Application Details

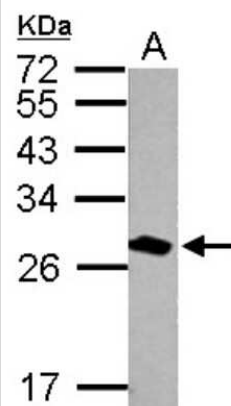
Applications	Western Blot, Immunohistochemistry, Immunohistochemistry-Paraffin
Recommended Dilutions	Western Blot 1:500-1:30000, Immunohistochemistry 10 - 1:500, Immunohistochemistry-Paraffin 1:100-1:1000

Images

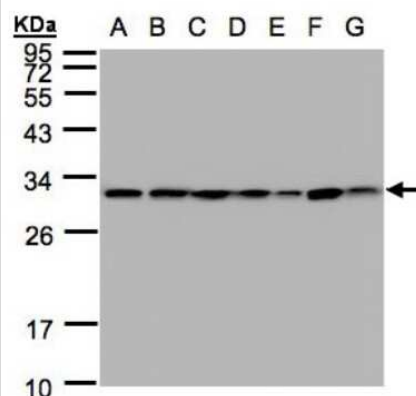
Western Blot: 14-3-3 tau/theta Antibody [NBP1-31537] - Various whole cell extracts (30 ug) were separated by 12% SDS-PAGE, and the membranes were blotted with 14-3-3 theta antibody and a competitor's antibody. HRP-conjugated anti-rabbit IgG antibody was used to detect the primary antibody.



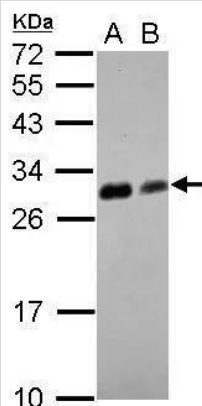
Western Blot: 14-3-3 tau/theta Antibody [NBP1-31537] - Sample (20 ug of whole cell lysate) A: mouse brain 12% SDS PAGE, antibody diluted at 1:30000.



Western Blot: 14-3-3 tau/theta Antibody [NBP1-31537] - Sample (30 ug whole cell lysate) A: 293T B: A431 C: H1299 D: HeLa S3 E: Hep G2 F: MOLT4 G: Raji 12% SDS PAGE, antibody diluted at 1:1000.

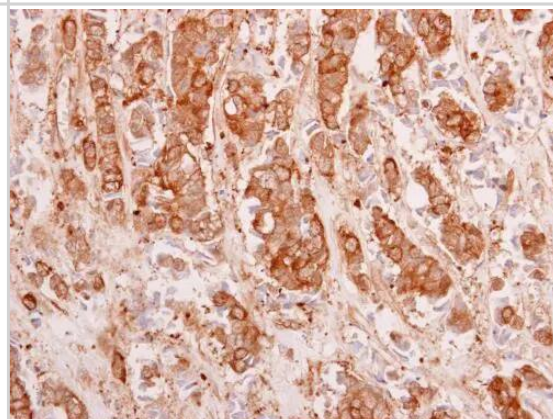


Western Blot: 14-3-3 tau/theta Antibody [NBP1-31537] - Sample (30 ug of whole cell lysate)
A: zebrafish eye
B: zebrafish heart
12% SDS PAGE
NBP1-31537 diluted at 1:1000



Immunohistochemistry-Paraffin: 14-3-3 tau/theta Antibody [NBP1-31537]
- 14-3-3 tau/theta antibody detects 14-3-3 tau/theta protein at cytoplasm in human breast carcinoma by immunohistochemical analysis.
Sample: Paraffin-embedded human breast carcinoma.
14-3-3 tau/theta antibody (NBP1-31537) diluted at 1:500.

Antigen Retrieval: Trilogy™ (EDTA based, pH 8.0) buffer, 15min





Novus Biologicals USA

10730 E. Briarwood Avenue
Centennial, CO 80112
USA
Phone: 303.730.1950
Toll Free: 1.888.506.6887
Fax: 303.730.1966
nb-customerservice@bio-techne.com

Bio-Techne Canada

21 Canmotor Ave
Toronto, ON M8Z 4E6
Canada
Phone: 905.827.6400
Toll Free: 855.668.8722
Fax: 905.827.6402
canada.inquires@bio-techne.com

Bio-Techne Ltd

19 Barton Lane
Abingdon Science Park
Abingdon, OX14 3NB, United Kingdom
Phone: (44) (0) 1235 529449
Free Phone: 0800 37 34 15
Fax: (44) (0) 1235 533420
info.EMEA@bio-techne.com

General Contact Information

www.novusbio.com
Technical Support: nb-technical@bio-techne.com
Orders: nb-customerservice@bio-techne.com
General: novus@novusbio.com

Products Related to NBP1-31537

HAF008	Goat anti-Rabbit IgG Secondary Antibody [HRP]
NB7160	Goat anti-Rabbit IgG (H+L) Secondary Antibody [HRP]
NBP2-24891	Rabbit IgG Isotype Control
NBC1-18393	Recombinant Human 14-3-3 tau/theta Protein

Limitations

This product is for research use only and is not approved for use in humans or in clinical diagnosis. Primary Antibodies are guaranteed for 1 year from date of receipt.

For more information on our 100% guarantee, please visit www.novusbio.com/guarantee

Earn gift cards/discounts by submitting a review: www.novusbio.com/reviews/submit/NBP1-31537

Earn gift cards/discounts by submitting a publication using this product:
www.novusbio.com/publications

