

Product Datasheet

SAMHD1 Antibody - BSA Free

NBP1-31432

Unit Size: 0.1 ml

Aliquot and store at -20C or -80C. Avoid freeze-thaw cycles.

www.novusbio.com



technical@novusbio.com

Publications: 3

Protocols, Publications, Related Products, Reviews, Research Tools and Images at:
www.novusbio.com/NBP1-31432

Updated 9/9/2025 v.20.1

Earn rewards for product
reviews and publications.

Submit a publication at www.novusbio.com/publications

Submit a review at www.novusbio.com/reviews/destination/NBP1-31432



NBP1-31432

SAMHD1 Antibody - BSA Free

Product Information

Unit Size	0.1 ml
Concentration	Concentrations vary lot to lot. See vial label for concentration. If unlisted please contact technical services.
Storage	Aliquot and store at -20C or -80C. Avoid freeze-thaw cycles.
Clonality	Polyclonal
Preservative	0.01% Thimerosal
Isotype	IgG
Purity	Antigen Affinity-purified
Buffer	0.1M Tris (pH 7), 0.1M Glycine, 10% Glycerol
Target Molecular Weight	72 kDa

Product Description

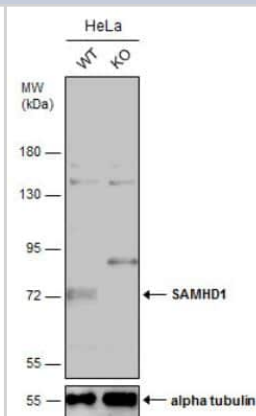
Description	Novus Biologicals Knockout (KO) Validated Rabbit SAMHD1 Antibody - BSA Free (NBP1-31432) is a polyclonal antibody validated for use in IHC, WB and ICC/IF. Anti-SAMHD1 Antibody: Cited in 3 publications. All Novus Biologicals antibodies are covered by our 100% guarantee.
Host	Rabbit
Gene ID	25939
Gene Symbol	SAMHD1
Species	Human
Reactivity Notes	Monkey reactivity reported in scientific literature (PMID: 24956595).
Immunogen	Recombinant protein encompassing a sequence within the center region of human SAMHD1. The exact sequence is proprietary.

Product Application Details

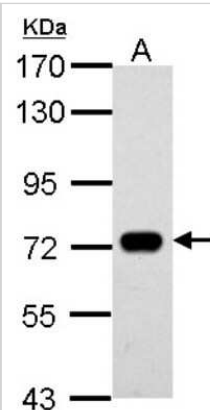
Applications	Western Blot, Immunohistochemistry-Paraffin, Immunocytochemistry/Immunofluorescence, Immunohistochemistry, Knockout Validated
Recommended Dilutions	Western Blot 1:500-1:3000, Immunohistochemistry 1:100-1:1000, Immunocytochemistry/ Immunofluorescence 1:100-1:1000, Immunohistochemistry-Paraffin 1:100-1:1000, Knockout Validated

Images

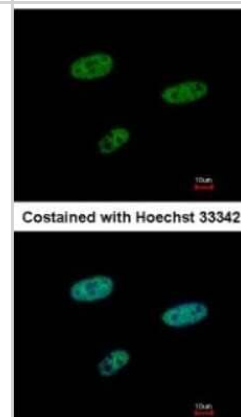
Western Blot: SAMHD1 Antibody [NBP1-31432] - Wild-type (WT) and SAMHD1 knockout (KO) HeLa cell extracts (30 ug) were separated by 7.5% SDS-PAGE, and the membrane was blotted with SAMHD1 antibody [N2C2], Internal. The HRP-conjugated anti-rabbit IgG antibody was used to detect the primary antibody, and the signal was developed with Trident ECL plus-Enhanced.



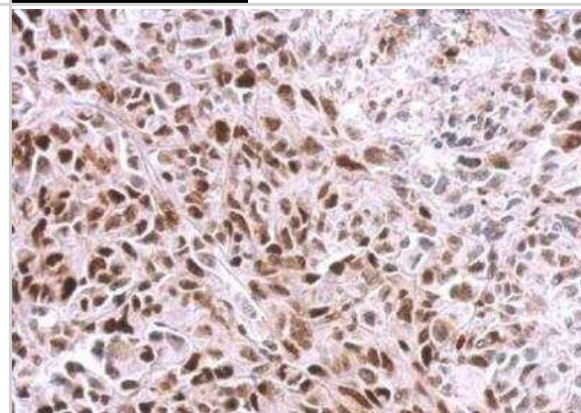
Western Blot: SAMHD1 Antibody [NBP1-31432] - Sample (30 ug of whole cell lysate) A: THP-1 7.5% SDS PAGE, antibody diluted at 1:500.



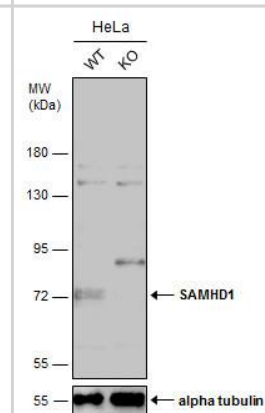
Immunocytochemistry/Immunofluorescence: SAMHD1 Antibody [NBP1-31432] - Paraformaldehyde-fixed HeLa, using antibody at 1:500 dilution.



Immunohistochemistry-Paraffin: SAMHD1 Antibody [NBP1-31432] - SkHep1 xenograft. SAMHD1 antibody [N2C2], Internal dilution: 1:500. Antigen Retrieval: Trilogy™ (EDTA based, pH 8.0) buffer, 15min.



Western Blot: SAMHD1 Antibody [NBP1-31432] - Wild-type (WT) and SAMHD1 knockout (KO) HeLa cell extracts (30 ug) were separated by 7.5% SDS-PAGE, and the membrane was blotted with SAMHD1 antibody [N2C2], Internal diluted at 1:500. The HRP-conjugated anti-rabbit IgG antibody was used to detect the primary antibody, and the signal was developed with Trident ECL plus-Enhanced.



Publications

An S, Vo TTL, Son T et al. SAMHD1-induced endosomal FAK signaling promotes human renal clear cell carcinoma metastasis by activating Rac1-mediated lamellipodia protrusion *Experimental & Molecular Medicine* 2023-04-03 [PMID: 37009792] (Western Blot, Human, Primate - *Macaca mulatta* (Rhesus Macaque))

St Gelais C, Kim SH, Ding L et al. A Putative Cyclin-binding Motif in Human SAMHD1 Contributes to Protein Phosphorylation, Localization and Stability. *J. Biol. Chem.* 2016-11-04 [PMID: 27815502]

Nomaguchi M, Doi N, Adachi A. Virological characterization of HIV-2 vpx gene mutants in various cell systems *Microbes Infect.* 2014-06-21 [PMID: 24956595] (WB, Monkey, Human)

Details:

SAMHD1 antibody used for WB in lysates of untreated 293T/ human kidney, HeLa/human uterine cervix and MK.P3(F)/cynomolgus macaque kidney, THP-1/human monocytic cells, U937/human monocytic cells, HSC-F/cynomolgus macaque lymphocytic cells and M1.3S cell line/rhesus macaque lymphocytic cells (Fig. 1C), and THP-1 cells treated or not with phorbol 12-myristate 13-acetate PMA (Fig. 2A). Besides detecting endogenous SAMHD1 of human and monkey cells, this antibody detected SAMHD1 in 293T cells transfected with pSG5 (STRATAGENE)-based plasmid vectors of rhesus and cynomolgus macaque SAMHD1 proteins (data not shown).





Novus Biologicals USA

10730 E. Briarwood Avenue
Centennial, CO 80112
USA
Phone: 303.730.1950
Toll Free: 1.888.506.6887
Fax: 303.730.1966
nb-customerservice@bio-techne.com

Bio-Techne Canada

21 Canmotor Ave
Toronto, ON M8Z 4E6
Canada
Phone: 905.827.6400
Toll Free: 855.668.8722
Fax: 905.827.6402
canada.inquires@bio-techne.com

Bio-Techne Ltd

19 Barton Lane
Abingdon Science Park
Abingdon, OX14 3NB, United Kingdom
Phone: (44) (0) 1235 529449
Free Phone: 0800 37 34 15
Fax: (44) (0) 1235 533420
info.EMEA@bio-techne.com

General Contact Information

www.novusbio.com
Technical Support: nb-technical@bio-techne.com
Orders: nb-customerservice@bio-techne.com
General: novus@novusbio.com

Products Related to NBP1-31432

HAF008	Goat anti-Rabbit IgG Secondary Antibody [HRP]
NB7160	Goat anti-Rabbit IgG (H+L) Secondary Antibody [HRP]
NBP2-24891	Rabbit IgG Isotype Control
H00025939-P01-10ug	Recombinant Human SAMHD1 GST (N-Term) Protein

Limitations

This product is for research use only and is not approved for use in humans or in clinical diagnosis. Primary Antibodies are guaranteed for 1 year from date of receipt.

For more information on our 100% guarantee, please visit www.novusbio.com/guarantee

Earn gift cards/discounts by submitting a review: www.novusbio.com/reviews/submit/NBP1-31432

Earn gift cards/discounts by submitting a publication using this product:
www.novusbio.com/publications

