

# Product Datasheet

## CMTM6 Antibody - BSA Free

### NBP1-31183

Unit Size: 100 ul

Aliquot and store at -20C or -80C. Avoid freeze-thaw cycles.

[www.novusbio.com](http://www.novusbio.com)



[technical@novusbio.com](mailto:technical@novusbio.com)

#### Publications: 7

Protocols, Publications, Related Products, Reviews, Research Tools and Images at:  
[www.novusbio.com/NBP1-31183](http://www.novusbio.com/NBP1-31183)

Updated 2/21/2025 v.20.1

Earn rewards for product  
reviews and publications.

Submit a publication at [www.novusbio.com/publications](http://www.novusbio.com/publications)

Submit a review at [www.novusbio.com/reviews/destination/NBP1-31183](http://www.novusbio.com/reviews/destination/NBP1-31183)



**NBP1-31183**

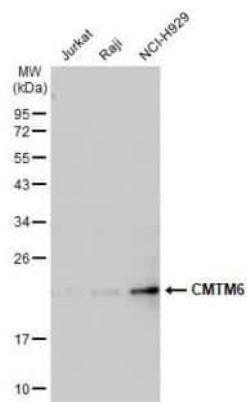
CMTM6 Antibody - BSA Free

<b>Product Information</b>	
<b>Unit Size</b>	100 ul
<b>Concentration</b>	Concentrations vary lot to lot. See vial label for concentration. If unlisted please contact technical services.
<b>Storage</b>	Aliquot and store at -20C or -80C. Avoid freeze-thaw cycles.
<b>Clonality</b>	Polyclonal
<b>Preservative</b>	0.025% Proclin 300
<b>Isotype</b>	IgG
<b>Purity</b>	Antigen Affinity-purified
<b>Buffer</b>	PBS (pH 7), 20% Glycerol
<b>Target Molecular Weight</b>	20 kDa
<b>Product Description</b>	
<b>Host</b>	Rabbit
<b>Gene ID</b>	54918
<b>Gene Symbol</b>	CMTM6
<b>Species</b>	Human
<b>Reactivity Notes</b>	Mouse reactivity reported in (PMID:32874775).
<b>Immunogen</b>	Carrier-protein conjugated synthetic peptide encompassing a sequence within the C-terminus region of human CMTM6. The exact sequence is proprietary.
<b>Product Application Details</b>	
<b>Applications</b>	Western Blot, Immunocytochemistry/ Immunofluorescence, Immunohistochemistry, Immunohistochemistry-Paraffin
<b>Recommended Dilutions</b>	Western Blot 1:500-1:3000, Immunohistochemistry 1:100-1:1000, Immunocytochemistry/ Immunofluorescence 1:100-1:1000, Immunohistochemistry-Paraffin 1:100-1:1000

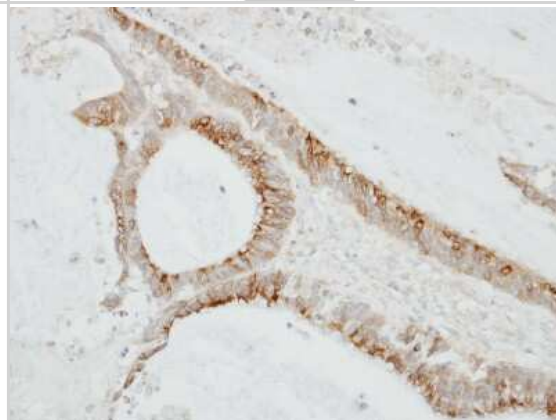


## Images

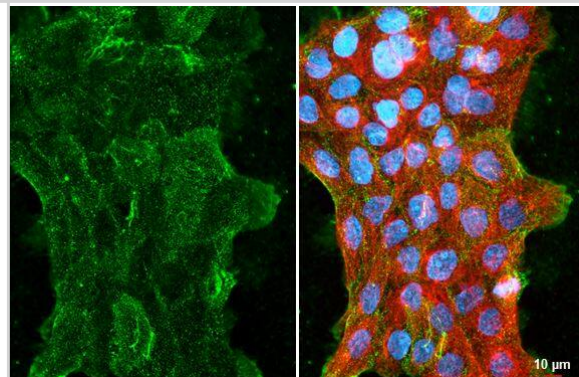
Western Blot: CMTM6 Antibody [NBP1-31183] - Various whole cell extracts (30 ug) were separated by 12% SDS-PAGE, and the membrane was blotted with CMTM6 antibody [C1C3] diluted at 1:1000. The HRP-conjugated anti-rabbit IgG antibody (NBP2-19301) was used to detect the primary antibody.



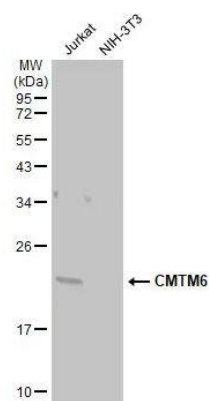
Immunohistochemistry-Paraffin: CMTM6 Antibody [NBP1-31183] - TW2.6 xenograft, using CMTM6 antibody at 1:100 dilution. Antigen Retrieval: Trilogy™ (EDTA based, pH 8.0) buffer, 15min.



Immunocytochemistry/Immunofluorescence: CMTM6 Antibody [NBP1-31183] - A431 cells were fixed in ice-cold MeOH for 5 min. Green: CMTM6 stained by CMTM6 antibody [C1C3] diluted at 1:500. Red: alpha Tubulin, a cytoskeleton marker, stained by alpha Tubulin antibody [114] diluted at 1:1000. Blue: Fluoroshield with DAPI.



Western Blot: CMTM6 Antibody [NBP1-31183] - Various whole cell extracts (30 ug) were separated by 12% SDS-PAGE, and the membrane was blotted with CMTM6 antibody [C1C3] diluted at 1:1000. The HRP-conjugated anti-rabbit IgG antibody (NBP2-19301) was used to detect the primary antibody.



**Publications**

Wei L, Wei Q, Yang X, Zhou P. CMTM6 knockdown prevents glioma progression by inactivating the mTOR pathway *Annals of Translational Medicine* 2022-02-01 [PMID: 35280358] (Immunohistochemistry)

Dai M, Lan T, Chen H et al. Nomogram based on CMTM6 expression and clinical characteristics to predict postoperative overall survival in patients with hepatocellular carcinoma *Histology and histopathology* 2023-06-19 [PMID: 37366540] (IHC)

Qian S, Xu J, Zhao S, Yang P CMTM6: Increased Circulating Level and Up-regulated Expression in Labial Salivary Glands in Patients with Primary Sjogren's Syndrome *Clinical and Experimental* 2021-01-01 [PMID: 35020842]

Li X, Chen L, Gu C et al. CMTM6 significantly relates to PD-L1 and predicts the prognosis of gastric cancer patients *PeerJ* 2020-08-17 [PMID: 32874775] (IF/IHC, Mouse)

Shang X, Li J, Wang H et al. CMTM6 is positively correlated with PD-L1 expression and immune cells infiltration in lung squamous carcinoma *Int. Immunopharmacol.* 2020-08-28 [PMID: 32866782] (IF/IHC, Human)

Wang H, Gao J, Zhang R et al. Molecular and immune characteristics for lung adenocarcinoma patients with CMTM6 overexpression *Int. Immunopharmacol.* 2020-04-08 [PMID: 32278132] (IF/IHC, Human)

Zhu X, Qi G, Li C et al. Expression and Clinical Significance of CMTM6 in Hepatocellular Carcinoma *DNA Cell Biol.* 2018-12-18 [PMID: 30562063] (IF/IHC, Human)





### **Novus Biologicals USA**

10730 E. Briarwood Avenue  
Centennial, CO 80112  
USA  
Phone: 303.730.1950  
Toll Free: 1.888.506.6887  
Fax: 303.730.1966  
nb-customerservice@bio-techne.com

### **Bio-Techne Canada**

21 Canmotor Ave  
Toronto, ON M8Z 4E6  
Canada  
Phone: 905.827.6400  
Toll Free: 855.668.8722  
Fax: 905.827.6402  
canada.inquires@bio-techne.com

### **Bio-Techne Ltd**

19 Barton Lane  
Abingdon Science Park  
Abingdon, OX14 3NB, United Kingdom  
Phone: (44) (0) 1235 529449  
Free Phone: 0800 37 34 15  
Fax: (44) (0) 1235 533420  
info.EMEA@bio-techne.com

### **General Contact Information**

www.novusbio.com  
Technical Support: nb-technical@bio-techne.com  
Orders: nb-customerservice@bio-techne.com  
General: novus@novusbio.com

### **Products Related to NBP1-31183**

---

HAF008	Goat anti-Rabbit IgG Secondary Antibody [HRP]
NB7160	Goat anti-Rabbit IgG (H+L) Secondary Antibody [HRP]
NBP2-24891	Rabbit IgG Isotype Control
H00054918-P01-10ug	Recombinant Human CMTM6 GST (N-Term) Protein

---

### **Limitations**

This product is for research use only and is not approved for use in humans or in clinical diagnosis. Primary Antibodies are guaranteed for 1 year from date of receipt.

For more information on our 100% guarantee, please visit [www.novusbio.com/guarantee](http://www.novusbio.com/guarantee)

Earn gift cards/discounts by submitting a review: [www.novusbio.com/reviews/submit/NBP1-31183](http://www.novusbio.com/reviews/submit/NBP1-31183)

Earn gift cards/discounts by submitting a publication using this product:  
[www.novusbio.com/publications](http://www.novusbio.com/publications)

