

Product Datasheet

Stathmin 1 Antibody - BSA Free NBP1-30883

Unit Size: 100 ul

Store at 4C short term. Aliquot and store at -20C long term. Avoid freeze-thaw cycles.

www.novusbio.com



technical@novusbio.com

Protocols, Publications, Related Products, Reviews, Research Tools and Images at:
www.novusbio.com/NBP1-30883

Updated 9/25/2025 v.20.1

Earn rewards for product
reviews and publications.

Submit a publication at www.novusbio.com/publications

Submit a review at www.novusbio.com/reviews/destination/NBP1-30883



NBP1-30883

Stathmin 1 Antibody - BSA Free

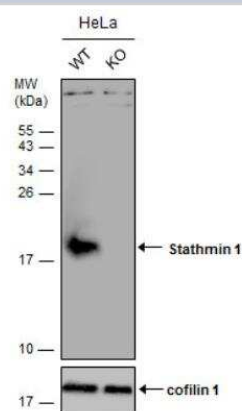
Product Information	
Unit Size	100 ul
Concentration	Concentrations vary lot to lot. See vial label for concentration. If unlisted please contact technical services.
Storage	Store at 4C short term. Aliquot and store at -20C long term. Avoid freeze-thaw cycles.
Clonality	Polyclonal
Preservative	0.01% Thimerosal
Isotype	IgG
Purity	Antigen Affinity-purified
Buffer	PBS, 10% Glycerol
Target Molecular Weight	17 kDa

Product Description	
Description	Novus Biologicals Knockout (KO) Validated Rabbit Stathmin 1 Antibody - BSA Free (NBP1-30883) is a polyclonal antibody validated for use in IHC, WB and ICC/IF. All Novus Biologicals antibodies are covered by our 100% guarantee.
Host	Rabbit
Gene ID	3925
Gene Symbol	STMN1
Species	Human, Mouse, Rat
Immunogen	Carrier-protein conjugated synthetic peptide encompassing a sequence within the C-terminus region of human Stathmin 1. The exact sequence is proprietary.

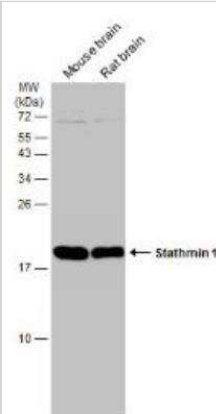
Product Application Details	
Applications	Western Blot, Immunohistochemistry-Paraffin, Immunocytochemistry/Immunofluorescence, Immunohistochemistry, Immunohistochemistry-Frozen, Knockout Validated
Recommended Dilutions	Western Blot 1:500-1:20000, Immunohistochemistry 1:100-1:1000, Immunocytochemistry/ Immunofluorescence 1:100-1:1000, Immunohistochemistry-Paraffin 1:100-1:1000, Immunohistochemistry-Frozen 1:100-1:1000, Knockout Validated

Images

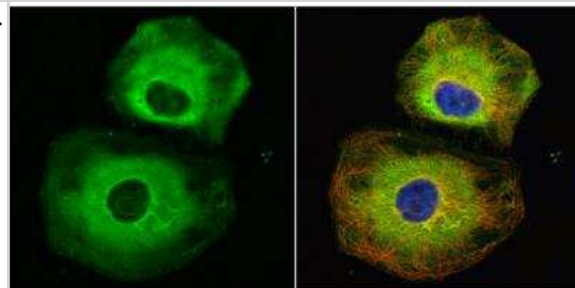
Western Blot: Stathmin 1 Antibody [NBP1-30883] - Wild-type (WT) and Stathmin 1 knockout (KO) HeLa cell extracts (30 ug) were separated by 15% SDS-PAGE, and the membrane was blotted with Stathmin 1 antibody diluted at 1:2000. The HRP-conjugated anti-rabbit IgG antibody was used to detect the primary antibody. CRISPR knockout cell lines generated by Edigene



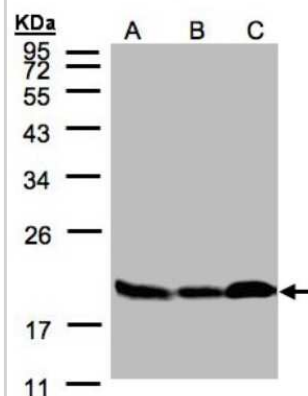
Western Blot: Stathmin 1 Antibody [NBP1-30883] - Various tissue extracts (50 ug) were separated by 15% SDS-PAGE, and the membrane was blotted with Stathmin 1 antibody (NBP1-30883). The HRP-conjugated anti-rabbit IgG antibody was used to detect the primary antibody.



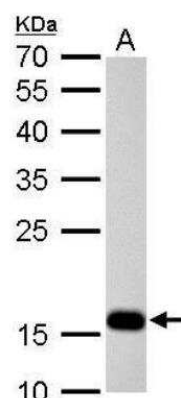
Immunocytochemistry/Immunofluorescence: Stathmin 1 Antibody [NBP1-30883] - Sample: HeLa cells were fixed in 4% paraformaldehyde at RT for 15 min. Green: Stathmin 1 protein stained by Stathmin 1 antibody diluted at 1:500. Red: alpha Tubulin, a cytoskeleton marker, stained by alpha Tubulin antibody diluted at 1:10000. Blue: Hoechst 33342 staining.



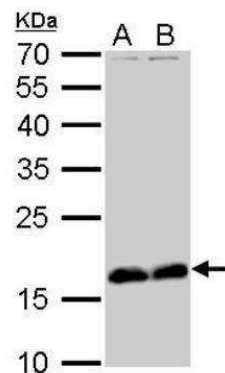
Western Blot: Stathmin 1 Antibody [NBP1-30883] - Sample(30 ug of whole cell lysate)A:293TB:A431 C:H129912% SDS PAGE, antibody diluted at 1:3000.



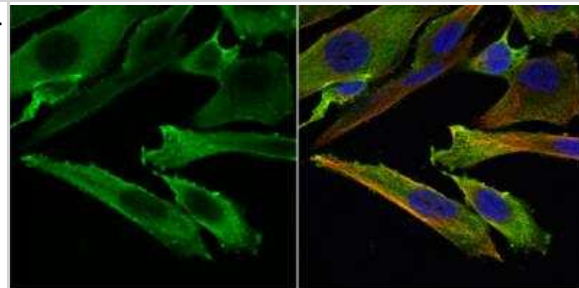
Western Blot: Stathmin 1 Antibody [NBP1-30883] - A. 50 ug mouse brain lysate/extract 12 % SDS-PAGE Stathmin 1 antibody dilution: 1:10000



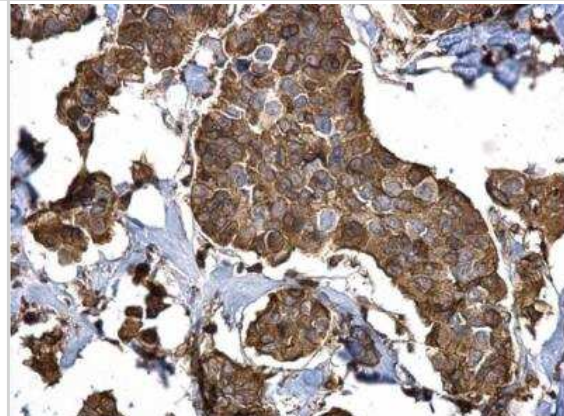
Western Blot: Stathmin 1 Antibody [NBP1-30883] - A. 30 ug PC-12 whole cell lysate/extract B. 30 ug Rat2 whole cell lysate/extract 12 % SDS-PAGE Stathmin 1 antibody dilution: 1:2000



Immunocytochemistry/Immunofluorescence: Stathmin 1 Antibody [NBP1-30883] - Sample: SK-N-SH cells were fixed in 4% paraformaldehyde at RT for 15 min. Green: Stathmin 1 protein stained by Stathmin 1 antibody diluted at 1:500. Red: alpha Tubulin, a cytoskeleton marker, stained by alpha Tubulin antibody diluted at 1:1000. Blue: Hoechst 33342 staining.



Immunohistochemistry-Paraffin: Stathmin 1 Antibody [NBP1-30883] - Sample: Paraffin-embedded human breast carcinoma. Stathmin 1 antibody dilution: 1:500.

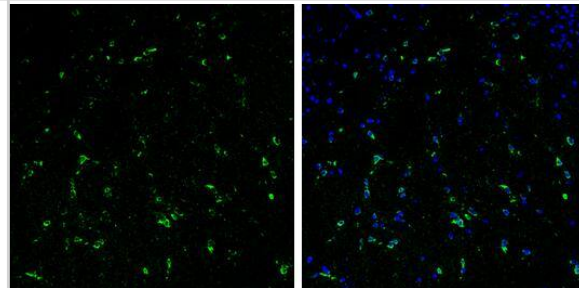


Stathmin 1 antibody detects Stathmin 1 protein expression by immunohistochemical analysis.

Sample: Frozen-sectioned adult mouse cerebellum.

Green: Stathmin 1 protein stained by Stathmin 1 antibody (NBP1-30883) diluted at 1:250.

Blue: Fluoroshield with DAPI .





Novus Biologicals USA

10730 E. Briarwood Avenue
Centennial, CO 80112
USA
Phone: 303.730.1950
Toll Free: 1.888.506.6887
Fax: 303.730.1966
nb-customerservice@bio-techne.com

Bio-Techne Canada

21 Canmotor Ave
Toronto, ON M8Z 4E6
Canada
Phone: 905.827.6400
Toll Free: 855.668.8722
Fax: 905.827.6402
canada.inquires@bio-techne.com

Bio-Techne Ltd

19 Barton Lane
Abingdon Science Park
Abingdon, OX14 3NB, United Kingdom
Phone: (44) (0) 1235 529449
Free Phone: 0800 37 34 15
Fax: (44) (0) 1235 533420
info.EMEA@bio-techne.com

General Contact Information

www.novusbio.com
Technical Support: nb-technical@bio-techne.com
Orders: nb-customerservice@bio-techne.com
General: novus@novusbio.com

Products Related to NBP1-30883

NBP2-33376H	Blue Marker Antibody (6F4-F6) [HRP]
HAF008	Goat anti-Rabbit IgG Secondary Antibody [HRP]
NB7160	Goat anti-Rabbit IgG (H+L) Secondary Antibody [HRP]
NBP2-24891	Rabbit IgG Isotype Control

Limitations

This product is for research use only and is not approved for use in humans or in clinical diagnosis. Primary Antibodies are guaranteed for 1 year from date of receipt.

For more information on our 100% guarantee, please visit www.novusbio.com/guarantee

Earn gift cards/discounts by submitting a review: www.novusbio.com/reviews/submit/NBP1-30883

Earn gift cards/discounts by submitting a publication using this product:
www.novusbio.com/publications

