

# Product Datasheet

## Two pore calcium channel protein 2 Antibody - Azide and BSA Free NBP1-30670

Unit Size: 0.5 mg

Store at 4C short term. Aliquot and store at -20C long term. Avoid freeze-thaw cycles.

[www.novusbio.com](http://www.novusbio.com)



[technical@novusbio.com](mailto:technical@novusbio.com)

Protocols, Publications, Related Products, Reviews, Research Tools and Images at:  
[www.novusbio.com/NBP1-30670](http://www.novusbio.com/NBP1-30670)

Updated 10/23/2024 v.20.1

Earn rewards for product reviews and publications.

Submit a publication at [www.novusbio.com/publications](http://www.novusbio.com/publications)

Submit a review at [www.novusbio.com/reviews/destination/NBP1-30670](http://www.novusbio.com/reviews/destination/NBP1-30670)



**NBP1-30670**

Two pore calcium channel protein 2 Antibody - Azide and BSA Free

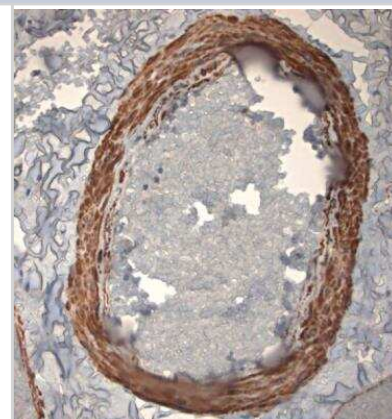
Product Information	
Unit Size	0.5 mg
Concentration	LYOPH mg/ml
Storage	Store at 4C short term. Aliquot and store at -20C long term. Avoid freeze-thaw cycles.
Clonality	Polyclonal
Preservative	No Preservative
Reconstitution Instructions	Reconstitute 0.5 mg size in 0.5 ml of sterile water. Centrifuge to remove any insoluble material. Glycerol may be added (1:1) for additional stability. Please note the 0.1 mg size is provided in reconstituted format.
Isotype	IgG
Purity	Ammonium sulfate precipitation
Buffer	Sterilized water

Product Description	
Host	Rabbit
Gene ID	219931
Gene Symbol	TPCN2
Species	Human
Immunogen	A synthetic peptide from amino acid region 700-752 of human Two pore calcium channel protein 2 conjugated to blue carrier protein was used as the antigen.

Product Application Details	
Applications	Western Blot, Immunohistochemistry, Immunohistochemistry-Paraffin
Recommended Dilutions	Western Blot 10-50 ug/ml , Immunohistochemistry 10-50 ug/ml , Immunohistochemistry-Paraffin 10-50 ug/ml
Application Notes	For IHC-Paraffin: Antigen retrieval is essential.

**Images**

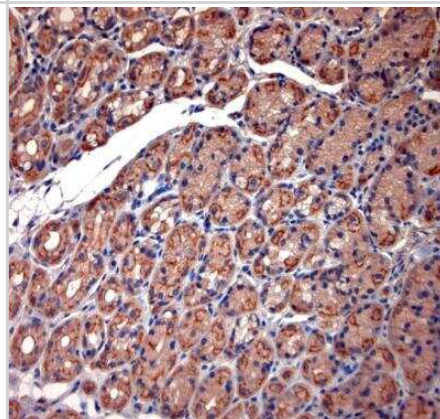
Immunohistochemistry-Paraffin: Two pore calcium channel protein 2 Antibody [NBP1-30670] - Sections of human gallbladder. HIER: Tris-EDTA, pH 9 for 20 min using Thermo PT Module. Blocking: 0.2% LFDM in TBST filtered thru 0.2 um. Primary antibody: dilution 10 ug/ml, incubated 30 min at RT using Autostainer. Sections were counterstained with Harris Hematoxylin.



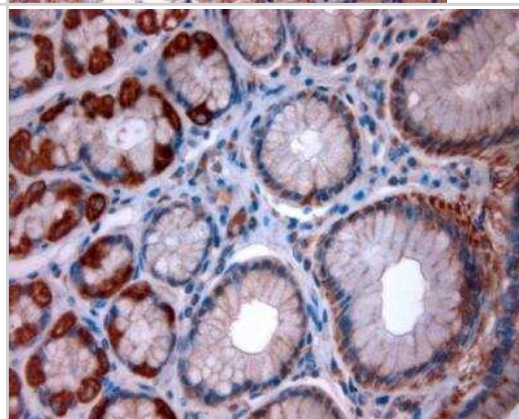
Immunohistochemistry-Paraffin: Two pore calcium channel protein 2 Antibody [NBP1-30670] - Sections of human stomach. HIER: Tris-EDTA, pH 9 for 20 min using Thermo PT Module. Blocking: 0.2% LFDM in TBST filtered thru 0.2 um. Primary antibody: dilution 10 ug/ml, incubated 30 min at RT using Autostainer. Sections were counterstained with Harris Hematoxylin.



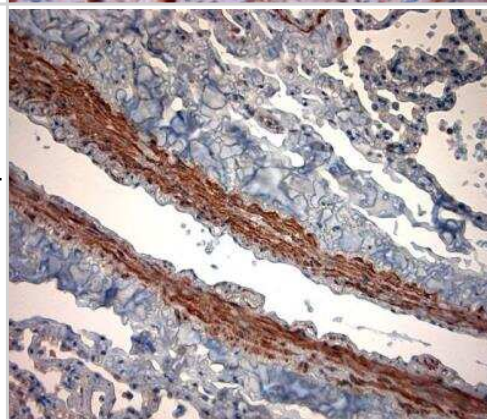
Immunohistochemistry-Paraffin: Two pore calcium channel protein 2 Antibody [NBP1-30670] - Sections of human stomach. HIER: Tris-EDTA, pH 9 for 20 min using Thermo PT Module. Blocking: 0.2% LFDM in TBST filtered thru 0.2 um. Primary antibody: dilution 10 ug/ml, incubated 30 min at RT using Autostainer. Sections were counterstained with Harris Hematoxylin.



Immunohistochemistry-Paraffin: Two pore calcium channel protein 2 Antibody [NBP1-30670] - Sections of human stomach. HIER: Tris-EDTA, pH 9 for 20 min using Thermo PT Module. Blocking: 0.2% LFDM in TBST filtered thru 0.2 um. Primary antibody: dilution 10 ug/ml, incubated 30 min at RT using Autostainer. Sections were counterstained with Harris Hematoxylin.



Immunohistochemistry-Paraffin: Two pore calcium channel protein 2 Antibody [NBP1-30670] - Sections of human lung. HIER: Tris-EDTA, pH 9 for 20 min using Thermo PT Module. Blocking: 0.2% LFDM in TBST filtered thru 0.2 um. Primary antibody: dilution 10 ug/ml, incubated 30 min at RT using Autostainer. Sections were counterstained with Harris Hematoxylin. Primary antibody: dilution 10 ug/ml, incubated 30 min at RT using Autostainer. Sections were counterstained with Harris Hematoxylin.





### **Novus Biologicals USA**

10730 E. Briarwood Avenue  
Centennial, CO 80112  
USA  
Phone: 303.730.1950  
Toll Free: 1.888.506.6887  
Fax: 303.730.1966  
nb-customerservice@bio-techne.com

### **Bio-Techne Canada**

21 Canmotor Ave  
Toronto, ON M8Z 4E6  
Canada  
Phone: 905.827.6400  
Toll Free: 855.668.8722  
Fax: 905.827.6402  
canada.inquires@bio-techne.com

### **Bio-Techne Ltd**

19 Barton Lane  
Abingdon Science Park  
Abingdon, OX14 3NB, United Kingdom  
Phone: (44) (0) 1235 529449  
Free Phone: 0800 37 34 15  
Fax: (44) (0) 1235 533420  
info.EMEA@bio-techne.com

### **General Contact Information**

[www.novusbio.com](http://www.novusbio.com)  
Technical Support: nb-technical@bio-techne.com  
Orders: nb-customerservice@bio-techne.com  
General: novus@novusbio.com

### **Products Related to NBP1-30670**

---

HAF008	Goat anti-Rabbit IgG Secondary Antibody [HRP]
NB7160	Goat anti-Rabbit IgG (H+L) Secondary Antibody [HRP]
NBP2-24891	Rabbit IgG Isotype Control
NBP1-86923PEP	Two pore calcium channel protein 2 Recombinant Protein Antigen

---

### **Limitations**

This product is for research use only and is not approved for use in humans or in clinical diagnosis. Primary Antibodies are guaranteed for 1 year from date of receipt.

For more information on our 100% guarantee, please visit [www.novusbio.com/guarantee](http://www.novusbio.com/guarantee)

Earn gift cards/discounts by submitting a review: [www.novusbio.com/reviews/submit/NBP1-30670](http://www.novusbio.com/reviews/submit/NBP1-30670)

Earn gift cards/discounts by submitting a publication using this product:  
[www.novusbio.com/publications](http://www.novusbio.com/publications)

