

Product Datasheet

CD3 epsilon Antibody (APA1/1) - BSA Free NBP1-30426

Unit Size: 0.1 mg

Store at 4C. Do not freeze.

www.novusbio.com



technical@novusbio.com

Protocols, Publications, Related Products, Reviews, Research Tools and Images at:
www.novusbio.com/NBP1-30426

Updated 10/23/2024 v.20.1

Earn rewards for product
reviews and publications.

Submit a publication at www.novusbio.com/publications

Submit a review at www.novusbio.com/reviews/destination/NBP1-30426



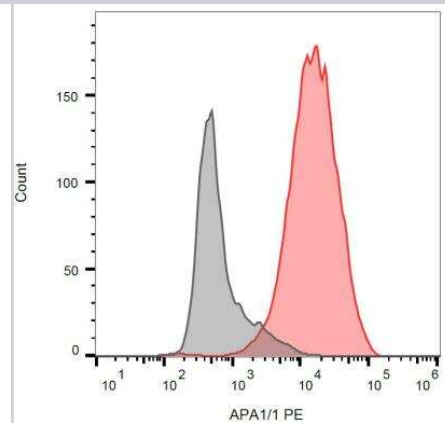
NBP1-30426

CD3 epsilon Antibody (APA1/1) - BSA Free

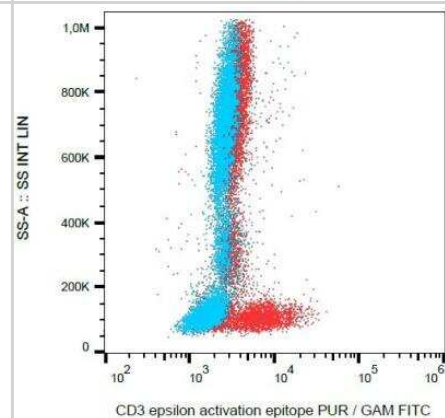
Product Information	
Unit Size	0.1 mg
Concentration	1.0 mg/ml
Storage	Store at 4C. Do not freeze.
Clonality	Monoclonal
Clone	APA1/1
Preservative	0.9% Sodium Azide
Isotype	IgG1
Purity	Protein A purified
Buffer	PBS (pH 7.4)
Product Description	
Host	Mouse
Gene ID	916
Gene Symbol	CD3E
Species	Human, Mouse
Reactivity Notes	Please note that this antibody is reactive to Mouse and derived from the same host, Mouse. Additional Mouse on Mouse blocking steps may be required for IHC and ICC experiments. Please contact Technical Support for more information.
Specificity/Sensitivity	The mouse monoclonal antibody APA1/1 recognizes an activation-dependent intracellular epitope of CD3 epsilon. Exposure of the epitope precedes CD3 phosphorylation and recruitment and activation of ZAP70, which initiates the signaling cascade produced by T-cell activation. APA1/1 provides the earliest known marker for TCR-mediated T cell activation.
Immunogen	Purified human CD3 proteins isolated from thymus
Product Application Details	
Applications	Western Blot, Flow Cytometry, Immunocytochemistry/ Immunofluorescence, Immunohistochemistry, Immunohistochemistry-Frozen, Immunoprecipitation, CyTOF-ready
Recommended Dilutions	Western Blot 1:1000, Flow Cytometry 1-4 ug/ml, Immunohistochemistry 1:10-1:500, Immunocytochemistry/ Immunofluorescence 1:10-1:500, Immunoprecipitation 1:50, Immunohistochemistry-Frozen 1:200, CyTOF-ready
Application Notes	Flow Cytometry: Sample preparation - At the end of stimulation of T cells, perform staining of surface markers (if required) in PBS + 0.1% BSA for 20 min. on ice. Wash with PBS and fix with 2% formaldehyde, 30 min on ice. Wash with PBS and incubate in PBS + 0,1% saponine, 5 min. RT. Incubate the cells in PBS + 1% BSA + 0.03% saponine, 15 min. on ice. Incubate with fluorescence-labeled APA1/1 antibody (1-2 ug/ml) in PBS + 1% BSA + 0.03% saponine in dark, 20 min. RT. Wash with PBS + 1% BSA + 0.03% saponine, resuspend in PBS. Immunocytochemistry: Fixed and permeabilized cells. The antibody can distinguish TCR-stimulated from non-stimulated cells. This antibody is CyTOF ready.

Images

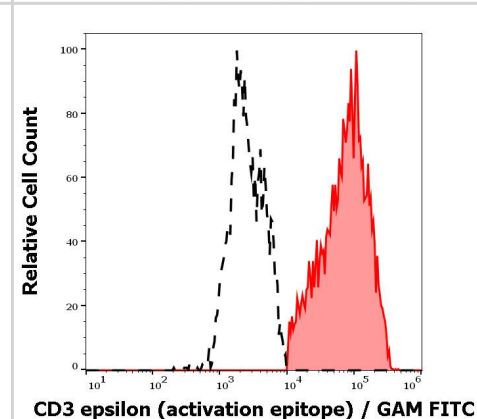
Flow Cytometry: CD3 epsilon Antibody (APA1/1) [NBP1-30426] - Intracellular staining of JURKAT cells with anti-CD3 epsilon activation epitope (APA1/1) PE.



Flow Cytometry: CD3 epsilon Antibody (APA1/1) [NBP1-30426] - Intracellular staining of human peripheral blood with anti-CD3 epsilon activation epitope (APA1/1) purified, GAM-FITC.



Separation of Jurkat cells stained anti-human CD3 activation epitope (APA1/1) purified antibody (concentration in sample 5 ug/ml, GAM FITC, red-filled) from Jurkat cells unstained by primary antibody (GAM FITC, black-dashed) in Analysis (intracellular staining).



Procedures

Flow Cytometry protocol for CD3 epsilon Antibody (NBP1-30426)

Flow Cytometry (NBP1-30426):

Positive control: Human T cells stimulated with anti-CD3 (MEM-57) antibody (1 mg/ml)

Sample preparation:

At the end of stimulation of T cells, perform staining of surface markers (if required) in PBS + 0.1% BSA for 20 min. on ice.

Wash with PBS and fix with 2% formaldehyde, 30 min on ice.

Wash with PBS and incubate in PBS + 0,1% saponine, 5 min. RT.

Incubate the cells in PBS + 1% BSA + 0.03% saponine, 15 min. on ice.

Incubate with fluorescence-labeled APA1/1 antibody (1-5 mg/ml) in PBS + 1% BSA + 0.03% saponine in dark, 20 min. RT.

Wash with PBS + 1% BSA + 0.03% saponine, resuspend in PBS.





Novus Biologicals USA

10730 E. Briarwood Avenue
Centennial, CO 80112
USA
Phone: 303.730.1950
Toll Free: 1.888.506.6887
Fax: 303.730.1966
nb-customerservice@bio-techne.com

Bio-Techne Canada

21 Canmotor Ave
Toronto, ON M8Z 4E6
Canada
Phone: 905.827.6400
Toll Free: 855.668.8722
Fax: 905.827.6402
canada.inquires@bio-techne.com

Bio-Techne Ltd

19 Barton Lane
Abingdon Science Park
Abingdon, OX14 3NB, United Kingdom
Phone: (44) (0) 1235 529449
Free Phone: 0800 37 34 15
Fax: (44) (0) 1235 533420
info.EMEA@bio-techne.com

General Contact Information

www.novusbio.com
Technical Support: nb-technical@bio-techne.com
Orders: nb-customerservice@bio-techne.com
General: novus@novusbio.com

Products Related to NBP1-30426

HAF007	Goat anti-Mouse IgG Secondary Antibody [HRP]
NB720-B	Rabbit anti-Mouse IgG (H+L) Secondary Antibody [Biotin]
NBP1-97005-0.5mg	Mouse IgG1 Isotype Control (MG1)
NBP1-30426APC	CD3 epsilon Antibody (APA1/1) [Allophycocyanin]

Limitations

This product is for research use only and is not approved for use in humans or in clinical diagnosis. Primary Antibodies are guaranteed for 1 year from date of receipt.

For more information on our 100% guarantee, please visit www.novusbio.com/guarantee

Earn gift cards/discounts by submitting a review: www.novusbio.com/reviews/submit/NBP1-30426

Earn gift cards/discounts by submitting a publication using this product:
www.novusbio.com/publications

