

# Product Datasheet

## Raw 264.7 Whole Cell - T0901317 treated Assay Kit NBP1-30159

Unit Size: 2 Vials

Store at -20 degrees C. Avoid freeze/thaw cycles.

[www.novusbio.com](http://www.novusbio.com)



[technical@novusbio.com](mailto:technical@novusbio.com)

Protocols, Publications, Related Products, Reviews, Research Tools and Images at:  
[www.novusbio.com/NBP1-30159](http://www.novusbio.com/NBP1-30159)

Updated 10/23/2024 v.20.1

Earn rewards for product  
reviews and publications.

Submit a publication at [www.novusbio.com/publications](http://www.novusbio.com/publications)

Submit a review at [www.novusbio.com/reviews/destination/NBP1-30159](http://www.novusbio.com/reviews/destination/NBP1-30159)



**NBP1-30159**

Raw 264.7 Whole Cell - T0901317 treated Assay Kit

**Product Information**

<b>Unit Size</b>	2 Vials
<b>Concentration</b>	Concentration is not relevant for this product. Please see the protocols for proper use of this product.
<b>Storage</b>	Store at -20 degrees C. Avoid freeze/thaw cycles.

**Product Description**

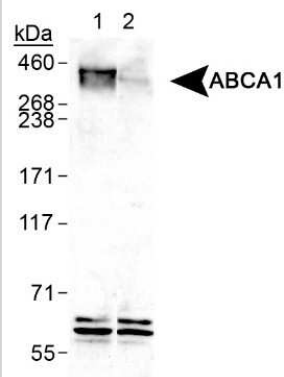
<b>Description</b>	Protein supplied in 1X Laemmli Sample Buffer without 2-mercaptoethanol. 2-Mercaptoethanol should be added to 10% prior to use. NOTE: Boiling can cause aggregation in large proteins, resulting in the proteins inability to enter the gel. Samples should be heated to 65C for 15 minutes prior to loading.
<b>Kit Components</b>	NBP1-30157: Raw 264.7 Whole Cell Lysate, NBP1-30158: Raw 264.7 Whole Cell - T0901317 treated Whole Cell Lysate
<b>Lysate Type</b>	Cell
<b>Lysate Tissue</b>	Blood Lymph
<b>Lysate Tissue Condition</b>	Tumor
<b>Lysate Life Stage</b>	Embryonic
<b>Lysate Protein State</b>	Denatured
<b>Lysate Subcellular Fraction</b>	Whole

**Product Application Details**

<b>Applications</b>	Western Blot
<b>Recommended Dilutions</b>	Western Blot 0.01 mL per lane

**Images**

Western Blot: Raw 264.7 Whole Cell - T0901317 treated Kit [NBP1-30159] - Samples: 25ug whole cell lysate of RAW 264.7 cells treated with T0901317 (lane 1) and untreated (lane 2).





### **Novus Biologicals USA**

10730 E. Briarwood Avenue  
Centennial, CO 80112  
USA  
Phone: 303.730.1950  
Toll Free: 1.888.506.6887  
Fax: 303.730.1966  
nb-customerservice@bio-techne.com

### **Bio-Techne Canada**

21 Canmotor Ave  
Toronto, ON M8Z 4E6  
Canada  
Phone: 905.827.6400  
Toll Free: 855.668.8722  
Fax: 905.827.6402  
canada.inquires@bio-techne.com

### **Bio-Techne Ltd**

19 Barton Lane  
Abingdon Science Park  
Abingdon, OX14 3NB, United Kingdom  
Phone: (44) (0) 1235 529449  
Free Phone: 0800 37 34 15  
Fax: (44) (0) 1235 533420  
info.EMEA@bio-techne.com

### **General Contact Information**

www.novusbio.com  
Technical Support: nb-technical@bio-  
techne.com  
Orders: nb-customerservice@bio-techne.com  
General: novus@novusbio.com

## **Products Related to NBP1-30159**

---

NBP1-30158	Raw 264.7 Whole Cell - T0901317 treated Whole Cell Lysate
------------	---

---

### **Limitations**

This product is for research use only and is not approved for use in humans or in clinical diagnosis. Kits are guaranteed for 6 months from date of receipt.

For more information on our 100% guarantee, please visit [www.novusbio.com/guarantee](http://www.novusbio.com/guarantee)

Earn gift cards/discounts by submitting a review: [www.novusbio.com/reviews/submit/NBP1-30159](http://www.novusbio.com/reviews/submit/NBP1-30159)

Earn gift cards/discounts by submitting a publication using this product:  
[www.novusbio.com/publications](http://www.novusbio.com/publications)

