

# Product Datasheet

## PKC zeta Antibody (R14-K)

### NBP1-30127-0.05ml

Unit Size: 0.05 ml

Store at 4C short term. Aliquot and store at -20C long term. Avoid freeze-thaw cycles.

[www.novusbio.com](http://www.novusbio.com)



[technical@novusbio.com](mailto:technical@novusbio.com)

#### Publications: 1

Protocols, Publications, Related Products, Reviews, Research Tools and Images at:  
[www.novusbio.com/NBP1-30127](http://www.novusbio.com/NBP1-30127)

Updated 10/23/2024 v.20.1

Earn rewards for product  
reviews and publications.

Submit a publication at [www.novusbio.com/publications](http://www.novusbio.com/publications)

Submit a review at [www.novusbio.com/reviews/destination/NBP1-30127](http://www.novusbio.com/reviews/destination/NBP1-30127)



**NBP1-30127-0.05ml**

PKC zeta Antibody (R14-K)

Product Information	
Unit Size	0.05 ml
Concentration	Please see the vial label for concentration. If unlisted please contact technical services.
Storage	Store at 4C short term. Aliquot and store at -20C long term. Avoid freeze-thaw cycles.
Clonality	Monoclonal
Clone	R14-K
Preservative	0.05% Sodium Azide
Isotype	IgG
Purity	Immunogen affinity purified
Buffer	20mM Tris/HCl (pH 8.0) and 10 mg/ml BSA

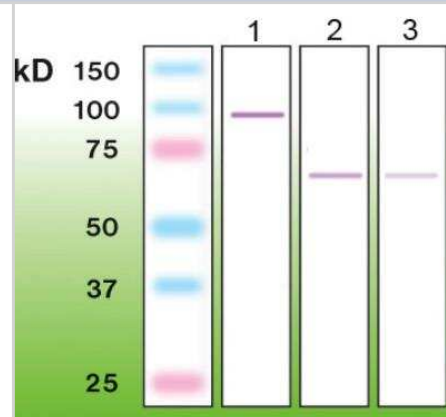
Product Description	
Description	This antibody is immunoaffinity purified with immunogenic peptide as a ligand.
Host	Rabbit
Gene ID	5590
Gene Symbol	PRKCZ
Species	Human, Mouse, Rat
Specificity/Sensitivity	This antibody is specific for PKC-Zeta.
Immunogen	Peptide derived from internal sequence on human PKC zeta. Antibody recognizes the epitope located between Lys220 - Leu231
Notes	This antibody is immunoaffinity purified with immunogenic peptide as a ligand.

Product Application Details	
Applications	Western Blot, ELISA, Immunocytochemistry/ Immunofluorescence, Immunoprecipitation
Recommended Dilutions	Western Blot 1:5000, ELISA 1:20000-1:100000, Immunocytochemistry/ Immunofluorescence 1:10-1:500, Immunoprecipitation
Application Notes	Dilutions for IP must be determined by end user.

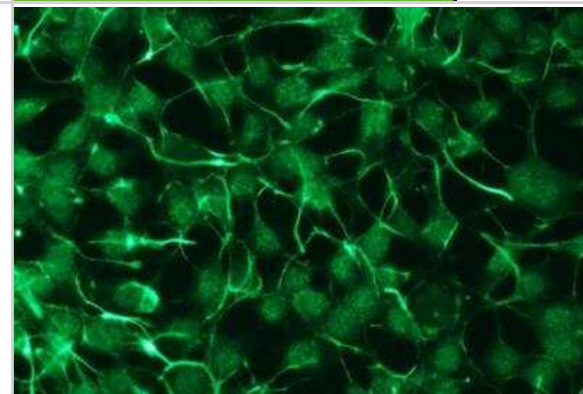


## Images

Western Blot: PKC zeta Antibody (R14-K) [NBP1-30127] - Lane 1-50ng of recombinant human PKC-zeta (N-term GST PKC-zeta; BML-SE443-0005); lane 2-mouse brain crude protein lysate (100 ug); lane 3-rat brain crude.



Immunocytochemistry/Immunofluorescence: PKC zeta Antibody (R14-K) [NBP1-30127] - Expression in HEK293 cells.



## Procedures

### Immunoprecipitation (IP) protocol

1. Dilute sample (200 - 500 ug of total protein) with Correction Buffer (2.5% v/v Nonidet P-40, 5% w/v sodium deoxycholate, 0.5% w/v SDS in ddH<sub>2</sub>O) in ratio 4:1 (v/v).
2. Add 5 ul of the antibody, mix gently and incubate for 1 hour on ice.
3. Mix with 50 ul of ProteinG-Sepharose (washed with 10mM Tris-HCl, pH7.5\*) and incubate for 30 minutes at 4 degrees C with gentle shaking.
  - a. \*NOTE: Washing of ProteinG-Sepharose with 10mM Tris-HCl, pH7.5: Resuspend 50 ul of ProteinG-Sepharose in 1 ml of 10mM Tris-HCl, pH7.5 by precise inverting of the tube several times. Centrifuge for 1 min, 900xg at 4 degrees C and discard supernatant. Avoid of wasting ProteinG-Sepharose agarose gel beads during discarding. Repeat this procedure for 3 times.
4. Centrifuge ProteinG-Sepharose immunocomplex for 2 min, 900xg at 4 degrees C and discard supernatant. (DO NOT spin any faster as this can cause the binding affinity to decrease).
5. Wash the pellet 3 times with 1 ml of RIPA Buffer (10mM TRIS-HCl, pH7.5, 140mM NaCl, 1% v/v Nonidet P-40, 1% w/v sodium deoxycholate, 0.5% w/v SDS v ddH<sub>2</sub>O).
  - a. IMPORTANT: Avoid of wasting/discarding ProteinG-Sepharose immunocomplex.
6. Wash sediment with 1 ml of 10mM TRIS-HCl, pH7.5, centrifuge sample (agarose gel beads) for 1 min, 900xg at 4 degrees C and discard the supernatant.
7. Dissociate immunocomplex from ProteinG-Sepharose with the help of Reduction Buffer (125mM TRIS- HCl, pH6.8, 3.3% SDS, 5% beta-mercaptoethanol). Mix the sample with 30 ul of Reduction Buffer, shake gently and incubate for 5 minutes at 65 degrees C.
8. Centrifuge at 3000xg for 5 minutes and transfer the supernatant (immunoprecipitated proteins) to new tube.
9. Separate the immunoprecipitated protein by 1D SDS-PAGE



### **Novus Biologicals USA**

10730 E. Briarwood Avenue  
Centennial, CO 80112  
USA  
Phone: 303.730.1950  
Toll Free: 1.888.506.6887  
Fax: 303.730.1966  
nb-customerservice@bio-techne.com

### **Bio-Techne Canada**

21 Canmotor Ave  
Toronto, ON M8Z 4E6  
Canada  
Phone: 905.827.6400  
Toll Free: 855.668.8722  
Fax: 905.827.6402  
canada.inquires@bio-techne.com

### **Bio-Techne Ltd**

19 Barton Lane  
Abingdon Science Park  
Abingdon, OX14 3NB, United Kingdom  
Phone: (44) (0) 1235 529449  
Free Phone: 0800 37 34 15  
Fax: (44) (0) 1235 533420  
info.EMEA@bio-techne.com

### **General Contact Information**

www.novusbio.com  
Technical Support: nb-technical@bio-techne.com  
Orders: nb-customerservice@bio-techne.com  
General: novus@novusbio.com

### **Products Related to NBP1-30127-0.05ml**

---

NB820-59182	Human Brain Cerebral Cortex Whole Tissue Lysate (Adult Whole Normal)
HAF008	Goat anti-Rabbit IgG Secondary Antibody [HRP]
NB7160	Goat anti-Rabbit IgG (H+L) Secondary Antibody [HRP]
NBP2-24891	Rabbit IgG Isotype Control

---

### **Limitations**

This product is for research use only and is not approved for use in humans or in clinical diagnosis. Primary Antibodies are guaranteed for 1 year from date of receipt.

For more information on our 100% guarantee, please visit [www.novusbio.com/guarantee](http://www.novusbio.com/guarantee)

Earn gift cards/discounts by submitting a review: [www.novusbio.com/reviews/submit/NBP1-30127](http://www.novusbio.com/reviews/submit/NBP1-30127)

Earn gift cards/discounts by submitting a publication using this product:  
[www.novusbio.com/publications](http://www.novusbio.com/publications)

