

Product Datasheet

BMAL1 Antibody NBP1-28802

Unit Size: 0.1 mg

Store at -20C. Avoid freeze-thaw cycles.

www.novusbio.com



technical@novusbio.com

Publications: 2

Protocols, Publications, Related Products, Reviews, Research Tools and Images at:
www.novusbio.com/NBP1-28802

Updated 10/23/2024 v.20.1

Earn rewards for product
reviews and publications.

Submit a publication at www.novusbio.com/publications

Submit a review at www.novusbio.com/reviews/destination/NBP1-28802



NBP1-28802**BMAL1 Antibody**

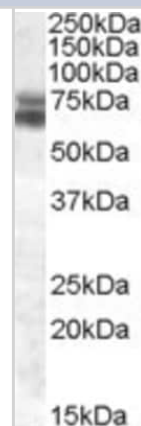
Product Information	
Unit Size	0.1 mg
Concentration	0.5 mg/ml
Storage	Store at -20C. Avoid freeze-thaw cycles.
Clonality	Polyclonal
Preservative	0.02% Sodium Azide
Isotype	IgG
Purity	Immunogen affinity purified
Buffer	Tris saline (20 mM Tris pH 7.3, 150 mM NaCl), 0.5% BSA

Product Description	
Host	Goat
Gene ID	406
Gene Symbol	BMAL1
Species	Human
Specificity/Sensitivity	This antibody is expected to recognize both reported isoforms (NP_001025444.1; NP_001025443.1). Reported variants represent identical protein (NP_001025443.1; NP_001169.3).
Immunogen	Peptide with sequence REKITTNCYKFKIKD corresponding to internal region according to NP_001025444.1.

Product Application Details	
Applications	Western Blot, ELISA, Peptide ELISA
Recommended Dilutions	Western Blot 0.3 - 1 ug/ml, ELISA, Peptide ELISA Detection limit 1:8000
Application Notes	Use in ELISA reported in scientific literature (PMID:34488619). WB: Approx. 70+75 kDa band bands observed in human brain (cerebellum). lysates (calculated MW of 68.7 kDa band according to NP_001169.3 and 64.1 kDa band according to NP_001025444.1). .

Images

Western Blot: BMAL1 Antibody [NBP1-28802] - (0.3ug/ml) staining of Human Brain (Cerebellum) 35ug protein in RIPA buffer). Primary incubation was 1 hour. Detected by chemiluminescence.



Publications

Mishra R, Bethunaickan R, Berthier CC et al. Reversible dysregulation of renal circadian rhythm in lupus nephritis Molecular medicine (Cambridge, Mass.) 2021-09-06 [PMID: 34488619] (ELISA, Mouse)

Fuller PM, Lu J, Saper CB. Differential rescue of light- and food-entrainable circadian rhythms. Science 2008-05-01 [PMID: 18497298]





Novus Biologicals USA

10730 E. Briarwood Avenue
Centennial, CO 80112
USA
Phone: 303.730.1950
Toll Free: 1.888.506.6887
Fax: 303.730.1966
nb-customerservice@bio-techne.com

Bio-Techne Canada

21 Canmotor Ave
Toronto, ON M8Z 4E6
Canada
Phone: 905.827.6400
Toll Free: 855.668.8722
Fax: 905.827.6402
canada.inquires@bio-techne.com

Bio-Techne Ltd

19 Barton Lane
Abingdon Science Park
Abingdon, OX14 3NB, United Kingdom
Phone: (44) (0) 1235 529449
Free Phone: 0800 37 34 15
Fax: (44) (0) 1235 533420
info.EMEA@bio-techne.com

General Contact Information

www.novusbio.com
Technical Support: nb-technical@bio-techne.com
Orders: nb-customerservice@bio-techne.com
General: novus@novusbio.com

Products Related to NBP1-28802

HAF017	Rabbit anti-Goat IgG Secondary Antibody [HRP (Horseradish Peroxidase)]
HAF109	Donkey anti-Goat IgG Secondary Antibody [HRP (Horseradish Peroxidase)]
NB410-28088-1mg	Goat IgG Isotype Control
H00000406-P01-10ug	Recombinant Human BMAL1 GST (N-Term) Protein

Limitations

This product is for research use only and is not approved for use in humans or in clinical diagnosis. Primary Antibodies are guaranteed for 1 year from date of receipt.

For more information on our 100% guarantee, please visit www.novusbio.com/guarantee

Earn gift cards/discounts by submitting a review: www.novusbio.com/reviews/submit/NBP1-28802

Earn gift cards/discounts by submitting a publication using this product:
www.novusbio.com/publications



