

# Product Datasheet

## Nudel Antibody NBP1-28801

Unit Size: 0.1 mg

Store at -20C. Avoid freeze-thaw cycles.

[www.novusbio.com](http://www.novusbio.com)



[technical@novusbio.com](mailto:technical@novusbio.com)

### Publications: 1

Protocols, Publications, Related Products, Reviews, Research Tools and Images at:  
[www.novusbio.com/NBP1-28801](http://www.novusbio.com/NBP1-28801)

Updated 10/23/2024 v.20.1

Earn rewards for product  
reviews and publications.

Submit a publication at [www.novusbio.com/publications](http://www.novusbio.com/publications)

Submit a review at [www.novusbio.com/reviews/destination/NBP1-28801](http://www.novusbio.com/reviews/destination/NBP1-28801)



**NBP1-28801**

## Nudel Antibody

**Product Information**

<b>Unit Size</b>	0.1 mg
<b>Concentration</b>	0.5 mg/ml
<b>Storage</b>	Store at -20C. Avoid freeze-thaw cycles.
<b>Clonality</b>	Polyclonal
<b>Preservative</b>	0.02% Sodium Azide
<b>Isotype</b>	IgG
<b>Purity</b>	Immunogen affinity purified
<b>Buffer</b>	Tris saline (20 mM Tris pH 7.3, 150 mM NaCl), 0.5% BSA

**Product Description**

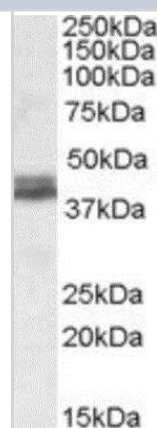
<b>Host</b>	Goat
<b>Gene ID</b>	81565
<b>Gene Symbol</b>	NDEL1
<b>Species</b>	Human
<b>Specificity/Sensitivity</b>	This antibody is expected to recognize both reported isoforms (NP_001020750.1; NP_110435.1).
<b>Immunogen</b>	Peptide with sequence CRNFAKDQASRKS corresponding to internal region according to NP_110435.1.

**Product Application Details**

<b>Applications</b>	Western Blot, Peptide ELISA
<b>Recommended Dilutions</b>	Western Blot 0.1 - 0.3 ug/ml, Peptide ELISA Detection limit 1:8000
<b>Application Notes</b>	WB: Approx. 38+39 kDa band bands observed in human brain (cerebellum) lysates (calculated MW of 37.0 kDa band according to NP_001020750.1 and of 38.4 kDa band according to NP_110435.1).

**Images**

Western Blot: Nudel Antibody [NBP1-28801] - (0.1ug/ml) staining of Human Cer(35ug protein in RIPA buffer). Primary incubation was 1 hour. Detected by chemiluminescence.

**Publications**

Yingling J, Youn YH, Darling D et al. Neuroepithelial stem cell proliferation requires LIS1 for precise spindle orientation and symmetric division. Cell 2008-02-01 [PMID: 18267077]



### **Novus Biologicals USA**

10730 E. Briarwood Avenue  
Centennial, CO 80112  
USA  
Phone: 303.730.1950  
Toll Free: 1.888.506.6887  
Fax: 303.730.1966  
nb-customerservice@bio-techne.com

### **Bio-Techne Canada**

21 Canmotor Ave  
Toronto, ON M8Z 4E6  
Canada  
Phone: 905.827.6400  
Toll Free: 855.668.8722  
Fax: 905.827.6402  
canada.inquires@bio-techne.com

### **Bio-Techne Ltd**

19 Barton Lane  
Abingdon Science Park  
Abingdon, OX14 3NB, United Kingdom  
Phone: (44) (0) 1235 529449  
Free Phone: 0800 37 34 15  
Fax: (44) (0) 1235 533420  
info.EMEA@bio-techne.com

### **General Contact Information**

www.novusbio.com  
Technical Support: nb-technical@bio-techne.com  
Orders: nb-customerservice@bio-techne.com  
General: novus@novusbio.com

### **Products Related to NBP1-28801**

HAF017	Rabbit anti-Goat IgG Secondary Antibody [HRP (Horseradish Peroxidase)]
HAF109	Donkey anti-Goat IgG Secondary Antibody [HRP (Horseradish Peroxidase)]
NB410-28088-1mg	Goat IgG Isotype Control
NBP2-51802-0.05mg	Recombinant Human Nudel His Protein

### **Limitations**

This product is for research use only and is not approved for use in humans or in clinical diagnosis. Primary Antibodies are guaranteed for 1 year from date of receipt.

For more information on our 100% guarantee, please visit [www.novusbio.com/guarantee](http://www.novusbio.com/guarantee)

Earn gift cards/discounts by submitting a review: [www.novusbio.com/reviews/submit/NBP1-28801](http://www.novusbio.com/reviews/submit/NBP1-28801)

Earn gift cards/discounts by submitting a publication using this product:  
[www.novusbio.com/publications](http://www.novusbio.com/publications)



