

# Product Datasheet

## CEP192 Antibody - BSA Free NBP1-28718

Unit Size: 100 ul

Store at 4C. Do not freeze.

[www.novusbio.com](http://www.novusbio.com)



[technical@novusbio.com](mailto:technical@novusbio.com)

### Publications: 3

Protocols, Publications, Related Products, Reviews, Research Tools and Images at:  
[www.novusbio.com/NBP1-28718](http://www.novusbio.com/NBP1-28718)

Updated 9/9/2025 v.20.1

Earn rewards for product  
reviews and publications.

Submit a publication at [www.novusbio.com/publications](http://www.novusbio.com/publications)

Submit a review at [www.novusbio.com/reviews/destination/NBP1-28718](http://www.novusbio.com/reviews/destination/NBP1-28718)



**NBP1-28718**

CEP192 Antibody - BSA Free

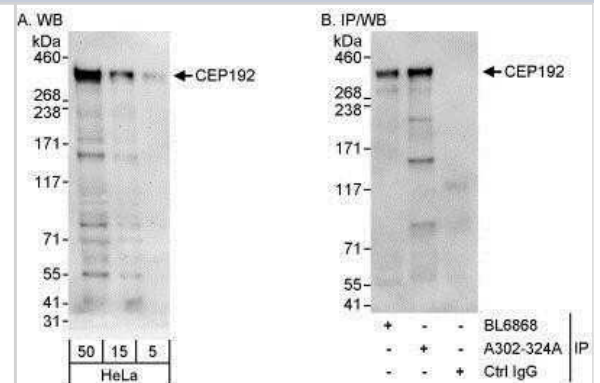
Product Information	
Unit Size	100 ul
Concentration	1.0 mg/ml
Storage	Store at 4C. Do not freeze.
Clonality	Polyclonal
Preservative	0.09% Sodium Azide
Isotype	IgG
Purity	Immunogen affinity purified
Buffer	Tris-Citrate/Phosphate (pH 7.0 - 8.0)

Product Description	
Description	Novus Biologicals Rabbit CEP192 Antibody - BSA Free (NBP1-28718) is a polyclonal antibody validated for use in WB, ICC/IF and IP. Anti-CEP192 Antibody: Cited in 3 publications. All Novus Biologicals antibodies are covered by our 100% guarantee.
Host	Rabbit
Gene ID	55125
Gene Symbol	CEP192
Species	Human
Immunogen	The immunogen recognized by this antibody maps to a region between residue 1800 and 1850 of human centrosomal protein using the numbering given in entry NP_115518.2 (GeneID 55125).

Product Application Details	
Applications	Western Blot, Immunoprecipitation
Recommended Dilutions	Western Blot 1:1000-1:5000, Immunoprecipitation 10 ug/mg lysate
Application Notes	Western blot of lysates performed using standard western blot reagents and 4-12% SDS-PAGE.

**Images**

Western Blot: CEP192 Antibody [NBP1-28718] - Detection of Human CEP192 by Western Blot and Immunoprecipitation. Samples: Whole cell lysate (5, 15 and 50 mcg for WB; 1 mg for IP, 20% of IP loaded) from HeLa cells. Antibodies: Affinity purified rabbit anti-CEP192 antibody NBP1-28718 used for WB at 0.4 mcg/ml (A) and 1 mcg/ml (B) and used for IP at 10 mcg/mg lysate. CEP192 was also immunoprecipitated by rabbit anti-CEP192 antibody BL6868, which recognizes an upstream epitope. For blotting immunoprecipitated CEP192, the ReliaBLOT® Reagents and Procedures were used. Detection: Chemiluminescence with exposure times of 3 minutes (A) and 30 seconds (B).



## Publications

Uzbas F, O'Neill AC. Spatial Centrosome Proteomic Profiling of Human iPSC-derived Neural Cells Bio Protoc 2023-09-05 [PMID: 37727868]

Park JG, Jeon H, Shin S et al. Structural basis for CEP192-mediated regulation of centrosomal AURKA Science advances 2023-04-21 [PMID: 37083534] (ICC/IF, Human)

Lee K, Rhee K. PLK1 phosphorylation of pericentrin initiates centrosome maturation at the onset of mitosis. J Cell Biol 2011-12-01 [PMID: 22184200]





### **Novus Biologicals USA**

10730 E. Briarwood Avenue  
Centennial, CO 80112  
USA  
Phone: 303.730.1950  
Toll Free: 1.888.506.6887  
Fax: 303.730.1966  
nb-customerservice@bio-techne.com

### **Bio-Techne Canada**

21 Canmotor Ave  
Toronto, ON M8Z 4E6  
Canada  
Phone: 905.827.6400  
Toll Free: 855.668.8722  
Fax: 905.827.6402  
canada.inquires@bio-techne.com

### **Bio-Techne Ltd**

19 Barton Lane  
Abingdon Science Park  
Abingdon, OX14 3NB, United Kingdom  
Phone: (44) (0) 1235 529449  
Free Phone: 0800 37 34 15  
Fax: (44) (0) 1235 533420  
info.EMEA@bio-techne.com

### **General Contact Information**

www.novusbio.com  
Technical Support: nb-technical@bio-techne.com  
Orders: nb-customerservice@bio-techne.com  
General: novus@novusbio.com

### **Products Related to NBP1-28718**

---

NBP2-33376H	Blue Marker Antibody (6F4-F6) [HRP]
HAF008	Goat anti-Rabbit IgG Secondary Antibody [HRP]
NB7160	Goat anti-Rabbit IgG (H+L) Secondary Antibody [HRP]
NBP2-24891	Rabbit IgG Isotype Control

---

### **Limitations**

This product is for research use only and is not approved for use in humans or in clinical diagnosis. Primary Antibodies are guaranteed for 1 year from date of receipt.

For more information on our 100% guarantee, please visit [www.novusbio.com/guarantee](http://www.novusbio.com/guarantee)

Earn gift cards/discounts by submitting a review: [www.novusbio.com/reviews/submit/NBP1-28718](http://www.novusbio.com/reviews/submit/NBP1-28718)

Earn gift cards/discounts by submitting a publication using this product:  
[www.novusbio.com/publications](http://www.novusbio.com/publications)

