

# Product Datasheet

## GW182 Antibody - BSA Free

### NBP1-28702

Unit Size: 100 ul

Store at 4C. Do not freeze.

[www.novusbio.com](http://www.novusbio.com)



[technical@novusbio.com](mailto:technical@novusbio.com)

Protocols, Publications, Related Products, Reviews, Research Tools and Images at:  
[www.novusbio.com/NBP1-28702](http://www.novusbio.com/NBP1-28702)

Updated 2/21/2025 v.20.1

Earn rewards for product  
reviews and publications.

Submit a publication at [www.novusbio.com/publications](http://www.novusbio.com/publications)

Submit a review at [www.novusbio.com/reviews/destination/NBP1-28702](http://www.novusbio.com/reviews/destination/NBP1-28702)



**NBP1-28702**

GW182 Antibody - BSA Free

Product Information	
Unit Size	100 ul
Concentration	1.0 mg/ml
Storage	Store at 4C. Do not freeze.
Clonality	Polyclonal
Preservative	0.09% Sodium Azide
Isotype	IgG
Purity	Immunogen affinity purified
Buffer	Tris-Citrate/Phosphate (pH 7.0 - 8.0)
Target Molecular Weight	210 kDa

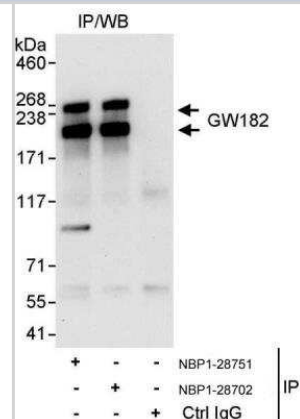
Product Description	
Host	Rabbit
Gene ID	27327
Gene Symbol	TNRC6A
Species	Human
Marker	P/GW Body Marker
Immunogen	The immunogen recognized by this antibody maps to a region between residue 1225 and 1275 of human glycine-tryptophan protein of 182 kDa (GW182) using the numbering given in entry NP_055309.2 (GenelD 27327).

Product Application Details	
Applications	Immunoprecipitation, Western Blot (Negative)
Recommended Dilutions	Immunoprecipitation 2 -5 ug/mg lysate, Western Blot (Negative)
Application Notes	Western Blot Not recommended.

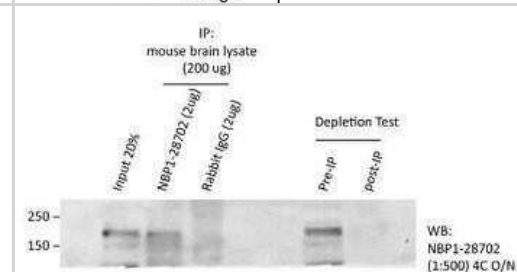


## Images

Immunoprecipitation: GW182 Antibody [NBP1-28702] - Samples: Whole cell lysate (1 mg for IP, 20% of IP loaded) from HeLa cells. Antibodies: Affinity purified rabbit anti-GW182 antibody NBP1-28702 used for IP at 10 ug/mg lysate. GW182 was also immunoprecipitated by rabbit anti-GW182 antibody NBP1-28751, which recognizes an upstream epitope. For blotting immunoprecipitated GW182, NBP1-28751 was used at 0.4 ug/ml. Detection: Chemiluminescence with an exposure time of 30 seconds.



Immunoprecipitation: GW182 Antibody [NBP1-28702] - Immunoprecipitation on mouse brain samples - (dissected hippocampus). The recommended dilution is 1:100.





### **Novus Biologicals USA**

10730 E. Briarwood Avenue  
Centennial, CO 80112  
USA  
Phone: 303.730.1950  
Toll Free: 1.888.506.6887  
Fax: 303.730.1966  
nb-customerservice@bio-techne.com

### **Bio-Techne Canada**

21 Canmotor Ave  
Toronto, ON M8Z 4E6  
Canada  
Phone: 905.827.6400  
Toll Free: 855.668.8722  
Fax: 905.827.6402  
canada.inquires@bio-techne.com

### **Bio-Techne Ltd**

19 Barton Lane  
Abingdon Science Park  
Abingdon, OX14 3NB, United Kingdom  
Phone: (44) (0) 1235 529449  
Free Phone: 0800 37 34 15  
Fax: (44) (0) 1235 533420  
info.EMEA@bio-techne.com

### **General Contact Information**

www.novusbio.com  
Technical Support: nb-technical@bio-techne.com  
Orders: nb-customerservice@bio-techne.com  
General: novus@novusbio.com

### **Products Related to NBP1-28702**

---

HAF008	Goat anti-Rabbit IgG Secondary Antibody [HRP]
NB7160	Goat anti-Rabbit IgG (H+L) Secondary Antibody [HRP]
NBP2-24891	Rabbit IgG Isotype Control
NBP1-88231PEP	GW182 Recombinant Protein Antigen

---

### **Limitations**

This product is for research use only and is not approved for use in humans or in clinical diagnosis. Primary Antibodies are guaranteed for 1 year from date of receipt.

For more information on our 100% guarantee, please visit [www.novusbio.com/guarantee](http://www.novusbio.com/guarantee)

Earn gift cards/discounts by submitting a review: [www.novusbio.com/reviews/submit/NBP1-28702](http://www.novusbio.com/reviews/submit/NBP1-28702)

Earn gift cards/discounts by submitting a publication using this product:  
[www.novusbio.com/publications](http://www.novusbio.com/publications)

