

# Product Datasheet

## CD20 Antibody (B-Ly1) [FITC]

### NBP1-28381

Unit Size: 1 ml

Store at 4C. Do not freeze.

[www.novusbio.com](http://www.novusbio.com)



[technical@novusbio.com](mailto:technical@novusbio.com)

Protocols, Publications, Related Products, Reviews, Research Tools and Images at:  
[www.novusbio.com/NBP1-28381](http://www.novusbio.com/NBP1-28381)

Updated 10/23/2024 v.20.1

Earn rewards for product reviews and publications.

Submit a publication at [www.novusbio.com/publications](http://www.novusbio.com/publications)

Submit a review at [www.novusbio.com/reviews/destination/NBP1-28381](http://www.novusbio.com/reviews/destination/NBP1-28381)



**NBP1-28381**

CD20 Antibody (B-Ly1) [FITC]

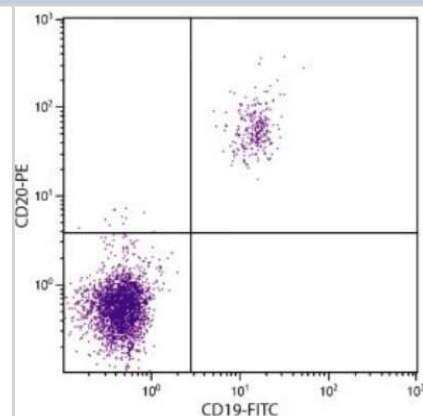
Product Information	
Unit Size	1 ml
Concentration	Please see the vial label for concentration. If unlisted please contact technical services.
Storage	Store at 4C. Do not freeze.
Clonality	Monoclonal
Clone	B-Ly1
Preservative	Sodium Azide
Isotype	IgG1 Kappa
Conjugate	FITC
Purity	Protein A or G purified
Buffer	PBS

Product Description	
Host	Mouse
Gene ID	931
Gene Symbol	MS4A1
Species	Human
Specificity/Sensitivity	Human CD20
Immunogen	The immunogen is a peptide made to the amino acid region CD20
Notes	Protect conjugated forms from light.

Product Application Details	
Applications	Flow Cytometry, Immunohistochemistry, Immunohistochemistry-Frozen, Immunohistochemistry-Paraffin, In vitro assay, Immunoprecipitation
Recommended Dilutions	Flow Cytometry 10 uL/10 <sup>6</sup> cells, Immunohistochemistry, Immunoprecipitation 1:10-1:500, Immunohistochemistry-Paraffin 1:10-1:500, Immunohistochemistry-Frozen 1:10-1:500, In vitro assay

**Images**

Flow Cytometry: MS4A1/CD20 Antibody (B-Ly1) [FITC] [NBP1-28381] - Analysis of peripheral blood lymphocytes by multiple staining.





### **Novus Biologicals USA**

10730 E. Briarwood Avenue  
Centennial, CO 80112  
USA  
Phone: 303.730.1950  
Toll Free: 1.888.506.6887  
Fax: 303.730.1966  
nb-customerservice@bio-techne.com

### **Bio-Techne Canada**

21 Canmotor Ave  
Toronto, ON M8Z 4E6  
Canada  
Phone: 905.827.6400  
Toll Free: 855.668.8722  
Fax: 905.827.6402  
canada.inquires@bio-techne.com

### **Bio-Techne Ltd**

19 Barton Lane  
Abingdon Science Park  
Abingdon, OX14 3NB, United Kingdom  
Phone: (44) (0) 1235 529449  
Free Phone: 0800 37 34 15  
Fax: (44) (0) 1235 533420  
info.EMEA@bio-techne.com

### **General Contact Information**

www.novusbio.com  
Technical Support: nb-technical@bio-techne.com  
Orders: nb-customerservice@bio-techne.com  
General: novus@novusbio.com

### **Products Related to NBP1-28381**

---

NBP1-43319F	Mouse IgG1 Kappa Isotype Control (P3.6.2.8.1) [FITC]
NBP1-28384	CD20 Antibody (B-Ly1) [Allophycocyanin]
NBP2-61455-10ug	Recombinant Human CD20 His Protein
210-TA-005	TNF-alpha [Unconjugated]

---

### **Limitations**

This product is for research use only and is not approved for use in humans or in clinical diagnosis. Primary Antibodies are guaranteed for 1 year from date of receipt.

For more information on our 100% guarantee, please visit [www.novusbio.com/guarantee](http://www.novusbio.com/guarantee)

Earn gift cards/discounts by submitting a review: [www.novusbio.com/reviews/submit/NBP1-28381](http://www.novusbio.com/reviews/submit/NBP1-28381)

Earn gift cards/discounts by submitting a publication using this product:  
[www.novusbio.com/publications](http://www.novusbio.com/publications)

