

Product Datasheet

ChT1 antigen Antibody (CT1) [PE] NBP1-28358

Unit Size: 0.1 mg

Store at 4C. Do not freeze.

www.novusbio.com



technical@novusbio.com

Protocols, Publications, Related Products, Reviews, Research Tools and Images at:
www.novusbio.com/NBP1-28358

Updated 10/23/2024 v.20.1

Earn rewards for product
reviews and publications.

Submit a publication at www.novusbio.com/publications

Submit a review at www.novusbio.com/reviews/destination/NBP1-28358



NBP1-28358

ChT1 antigen Antibody (CT1) [PE]

Product Information

| | |
|----------------------|-----------------------------|
| Unit Size | 0.1 mg |
| Concentration | 0.1 mg/ml |
| Storage | Store at 4C. Do not freeze. |
| Clonality | Monoclonal |
| Clone | CT1 |
| Preservative | Sodium Azide |
| Isotype | IgG1 Kappa |
| Conjugate | PE |
| Purity | Protein A or G purified |
| Buffer | PBS and a stabilizing agent |

Product Description

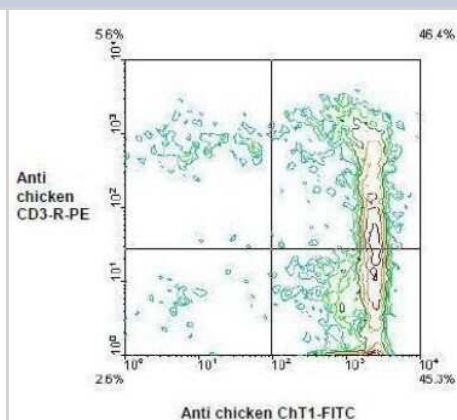
| | |
|--------------------------------|--------------------------------------|
| Host | Mouse |
| Species | Avian, Chicken |
| Specificity/Sensitivity | Chicken/Quail ChT1 |
| Immunogen | Chicken thymocytes |
| Notes | Protect conjugated forms from light. |

Product Application Details

| | |
|------------------------------|--|
| Applications | Flow Cytometry, In vitro assay, Immunoprecipitation |
| Recommended Dilutions | Flow Cytometry $\geq 0.2 \text{ ug}/10^6 \text{ cells}$, Immunoprecipitation 1:10-1:500, In vitro assay |

Images

Flow Cytometry: ChT1 antigen Antibody (CT1) [PE] [NBP1-28358] - Chicken thymocytes were double stained with mouse anti-chicken CD3-PE and mouse antichickn ChT1-FITC. Analysis was performed on a Flow cytometer using a light scatter gate to identify small lymphocytes.





Novus Biologicals USA

10730 E. Briarwood Avenue
Centennial, CO 80112
USA
Phone: 303.730.1950
Toll Free: 1.888.506.6887
Fax: 303.730.1966
nb-customerservice@bio-techne.com

Bio-Techne Canada

21 Canmotor Ave
Toronto, ON M8Z 4E6
Canada
Phone: 905.827.6400
Toll Free: 855.668.8722
Fax: 905.827.6402
canada.inquires@bio-techne.com

Bio-Techne Ltd

19 Barton Lane
Abingdon Science Park
Abingdon, OX14 3NB, United Kingdom
Phone: (44) (0) 1235 529449
Free Phone: 0800 37 34 15
Fax: (44) (0) 1235 533420
info.EMEA@bio-techne.com

General Contact Information

www.novusbio.com
Technical Support: nb-technical@bio-techne.com
Orders: nb-customerservice@bio-techne.com
General: novus@novusbio.com

Products Related to NBP1-28358

| | |
|--------------------|--|
| NBP1-43319PE-0.5ml | Mouse IgG1 Kappa Isotype Control (P3.6.2.8.1) [PE] |
| NBP1-28356 | ChT1 antigen Antibody (CT1) [FITC] |

Limitations

This product is for research use only and is not approved for use in humans or in clinical diagnosis. Primary Antibodies are guaranteed for 1 year from date of receipt.

For more information on our 100% guarantee, please visit www.novusbio.com/guarantee

Earn gift cards/discounts by submitting a review: www.novusbio.com/reviews/submit/NBP1-28358

Earn gift cards/discounts by submitting a publication using this product:
www.novusbio.com/publications

