

# Product Datasheet

## KLRG1 Antibody (2F1) [FITC]

### NBP1-28116

Unit Size: 0.25 mg

Store at 4C. Do not freeze.

[www.novusbio.com](http://www.novusbio.com)



[technical@novusbio.com](mailto:technical@novusbio.com)

Protocols, Publications, Related Products, Reviews, Research Tools and Images at:  
[www.novusbio.com/NBP1-28116](http://www.novusbio.com/NBP1-28116)

Updated 10/23/2024 v.20.1

Earn rewards for product reviews and publications.

Submit a publication at [www.novusbio.com/publications](http://www.novusbio.com/publications)

Submit a review at [www.novusbio.com/reviews/destination/NBP1-28116](http://www.novusbio.com/reviews/destination/NBP1-28116)



**NBP1-28116**

KLRG1 Antibody (2F1) [FITC]

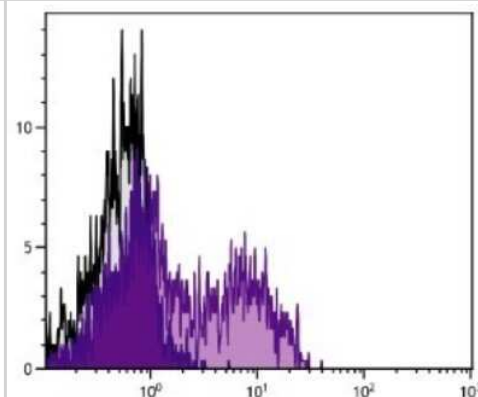
Product Information	
Unit Size	0.25 mg
Concentration	Please see the vial label for concentration. If unlisted please contact technical services.
Storage	Store at 4C. Do not freeze.
Clonality	Monoclonal
Clone	2F1
Preservative	0.05% Sodium Azide
Isotype	IgG2
Conjugate	FITC
Purity	Protein A or G purified
Buffer	PBS

Product Description	
Host	Golden Syrian Hamster
Gene ID	10219
Gene Symbol	KLRG1
Species	Human, Mouse
Reactivity Notes	Mouse.
Specificity/Sensitivity	KLRG1 (Mr 30-38 kDa)
Immunogen	IL-2-activated NK cells (A-LAK cells) from B6 (H-2b) mice
Notes	Protect conjugated forms from light.

Product Application Details	
Applications	Flow Cytometry
Recommended Dilutions	Flow Cytometry

**Images**

Flow Cytometry: KLRG1 Antibody (2F1) [FITC] [NBP1-28116] - Analysis of C57BL/6 splenocytes by multiple staining.





### **Novus Biologicals USA**

10730 E. Briarwood Avenue  
Centennial, CO 80112  
USA  
Phone: 303.730.1950  
Toll Free: 1.888.506.6887  
Fax: 303.730.1966  
nb-customerservice@bio-techne.com

### **Bio-Techne Canada**

21 Canmotor Ave  
Toronto, ON M8Z 4E6  
Canada  
Phone: 905.827.6400  
Toll Free: 855.668.8722  
Fax: 905.827.6402  
canada.inquires@bio-techne.com

### **Bio-Techne Ltd**

19 Barton Lane  
Abingdon Science Park  
Abingdon, OX14 3NB, United Kingdom  
Phone: (44) (0) 1235 529449  
Free Phone: 0800 37 34 15  
Fax: (44) (0) 1235 533420  
info.EMEA@bio-techne.com

### **General Contact Information**

www.novusbio.com  
Technical Support: nb-technical@bio-techne.com  
Orders: nb-customerservice@bio-techne.com  
General: novus@novusbio.com

### **Products Related to NBP1-28116**

---

NBP1-28117	KLRG1 Antibody (2F1) [Biotin]
NBP2-23172-0.01mg	Recombinant Human KLRG1 His Protein
202-IL-010	IL-2 [Unconjugated]
6944-KR-050	KLRG1 [Unconjugated]

---

### **Limitations**

This product is for research use only and is not approved for use in humans or in clinical diagnosis. Primary Antibodies are guaranteed for 1 year from date of receipt.

For more information on our 100% guarantee, please visit [www.novusbio.com/guarantee](http://www.novusbio.com/guarantee)

Earn gift cards/discounts by submitting a review: [www.novusbio.com/reviews/submit/NBP1-28116](http://www.novusbio.com/reviews/submit/NBP1-28116)

Earn gift cards/discounts by submitting a publication using this product:  
[www.novusbio.com/publications](http://www.novusbio.com/publications)

