

# Product Datasheet

## CD2 Antibody (12-15) [PE] NBP1-26669

Unit Size: 0.2 mg

Store at 4C. Do not freeze.

[www.novusbio.com](http://www.novusbio.com)



[technical@novusbio.com](mailto:technical@novusbio.com)

Protocols, Publications, Related Products, Reviews, Research Tools and Images at:  
[www.novusbio.com/NBP1-26669](http://www.novusbio.com/NBP1-26669)

Updated 7/6/2022 v.20.1

Earn rewards for product  
reviews and publications.

Submit a publication at [www.novusbio.com/publications](http://www.novusbio.com/publications)

Submit a review at [www.novusbio.com/reviews/destination/NBP1-26669](http://www.novusbio.com/reviews/destination/NBP1-26669)



**NBP1-26669**

CD2 Antibody (12-15) [PE]

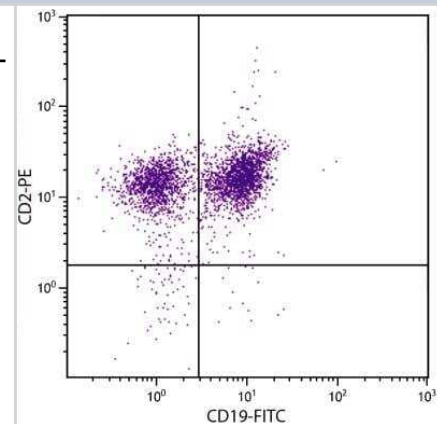
Product Information	
Unit Size	0.2 mg
Concentration	0.1 mg/ml
Storage	Store at 4C. Do not freeze.
Clonality	Monoclonal
Clone	12-15
Preservative	Sodium Azide
Isotype	IgG1 Kappa
Conjugate	PE
Purity	Protein A or G purified
Buffer	PBS and a stabilizing agent

Product Description	
Host	Rat
Gene ID	914
Gene Symbol	CD2
Species	Mouse
Specificity/Sensitivity	Mouse CD2/LFA-2 (Mr 45-58 kDa)
Immunogen	Crude plasma membranes of ESb cells
Notes	Protect conjugated forms from light.

Product Application Details	
Applications	Flow Cytometry, In vitro assay, Immunoprecipitation
Recommended Dilutions	Flow Cytometry $\approx$ 0.5 ug/10 <sup>6</sup> cells, Immunoprecipitation 1:10-1:500, In vitro assay
Application Notes	Flow Cytometry, Immunoprecipitation, In vitro inhibition of CTL-mediated lysis, Induction of T cell unresponsiveness in vivo

**Images**

Flow Cytometry: CD2 Antibody (12-15) [PE] [NBP1-26669] - C57BL/6 mouse splenocytes stained with NBP1-26669 (PE conjugate) and NBP1-26667 (FITC conjugate)





### **Novus Biologicals USA**

10730 E. Briarwood Avenue  
Centennial, CO 80112  
USA  
Phone: 303.730.1950  
Toll Free: 1.888.506.6887  
Fax: 303.730.1966  
nb-customerservice@bio-techne.com

### **Bio-Techne Canada**

21 Canmotor Ave  
Toronto, ON M8Z 4E6  
Canada  
Phone: 905.827.6400  
Toll Free: 855.668.8722  
Fax: 905.827.6402  
canada.inquires@bio-techne.com

### **Bio-Techne Ltd**

19 Barton Lane  
Abingdon Science Park  
Abingdon, OX14 3NB, United Kingdom  
Phone: (44) (0) 1235 529449  
Free Phone: 0800 37 34 15  
Fax: (44) (0) 1235 533420  
info.EMEA@bio-techne.com

### **General Contact Information**

www.novusbio.com  
Technical Support: nb-technical@bio-techne.com  
Orders: nb-customerservice@bio-techne.com  
General: novus@novusbio.com

### **Products Related to NBP1-26669**

---

NBP1-51817PE	Rat IgG1 Kappa Light Chain Isotype Control (KLH/G1-2-2) [PE]
NBP1-26667	CD2 Antibody (12-15) [FITC]
NBP2-22745	Recombinant Human CD2 His Protein
210-TA-005	TNF-alpha [Unconjugated]

---

### **Limitations**

This product is for research use only and is not approved for use in humans or in clinical diagnosis. Primary Antibodies are guaranteed for 1 year from date of receipt.

For more information on our 100% guarantee, please visit [www.novusbio.com/guarantee](http://www.novusbio.com/guarantee)

Earn gift cards/discounts by submitting a review: [www.novusbio.com/reviews/submit/NBP1-26669](http://www.novusbio.com/reviews/submit/NBP1-26669)

Earn gift cards/discounts by submitting a publication using this product:  
[www.novusbio.com/publications](http://www.novusbio.com/publications)

