

Product Datasheet

CD2 Antibody (12-15) [Biotin] NBP1-26668

Unit Size: 0.25 mg

Store at 4C. Do not freeze.

www.novusbio.com



technical@novusbio.com

Protocols, Publications, Related Products, Reviews, Research Tools and Images at:
www.novusbio.com/NBP1-26668

Updated 10/23/2024 v.20.1

Earn rewards for product
reviews and publications.

Submit a publication at www.novusbio.com/publications

Submit a review at www.novusbio.com/reviews/destination/NBP1-26668



NBP1-26668

CD2 Antibody (12-15) [Biotin]

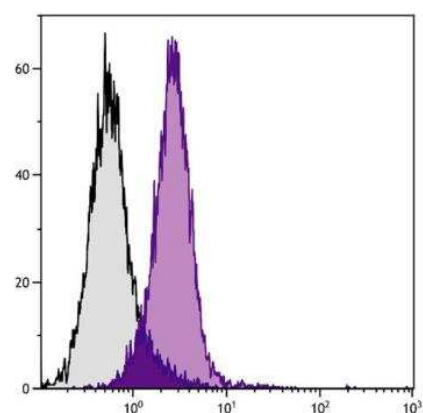
Product Information	
Unit Size	0.25 mg
Concentration	Please see the vial label for concentration. If unlisted please contact technical services.
Storage	Store at 4C. Do not freeze.
Clonality	Monoclonal
Clone	12-15
Preservative	Sodium Azide
Isotype	IgG1 Kappa
Conjugate	Biotin
Purity	Protein A or G purified
Buffer	PBS

Product Description	
Host	Rat
Gene ID	914
Gene Symbol	CD2
Species	Mouse
Specificity/Sensitivity	Mouse CD2/LFA-2 (Mr 45-58 kDa)
Immunogen	Crude plasma membranes of ESb cells
Notes	Protect conjugated forms from light.

Product Application Details	
Applications	Flow Cytometry
Recommended Dilutions	Flow Cytometry

Images

Flow Cytometry: CD2 Antibody (12-15) [Biotin] [NBP1-26668] - BALB/c mouse splenocytes were stained with Rat Anti-Mouse CD2-BIOT followed by Streptavidin-FITC.





Novus Biologicals USA

10730 E. Briarwood Avenue
Centennial, CO 80112
USA
Phone: 303.730.1950
Toll Free: 1.888.506.6887
Fax: 303.730.1966
nb-customerservice@bio-techne.com

Bio-Techne Canada

21 Canmotor Ave
Toronto, ON M8Z 4E6
Canada
Phone: 905.827.6400
Toll Free: 855.668.8722
Fax: 905.827.6402
canada.inquires@bio-techne.com

Bio-Techne Ltd

19 Barton Lane
Abingdon Science Park
Abingdon, OX14 3NB, United Kingdom
Phone: (44) (0) 1235 529449
Free Phone: 0800 37 34 15
Fax: (44) (0) 1235 533420
info.EMEA@bio-techne.com

General Contact Information

www.novusbio.com
Technical Support: nb-technical@bio-techne.com
Orders: nb-customerservice@bio-techne.com
General: novus@novusbio.com

Products Related to NBP1-26668

NBP2-29370	Streptavidin Native Protein
NBP1-43562-0.1mg	Rat IgG1 Kappa Light Chain Isotype Control (RG1) [Biotin]
NBP1-26669	CD2 Antibody (12-15) [PE]
NBP2-59526-50ug	Recombinant Human CD2 His Protein

Limitations

This product is for research use only and is not approved for use in humans or in clinical diagnosis. Primary Antibodies are guaranteed for 1 year from date of receipt.

For more information on our 100% guarantee, please visit www.novusbio.com/guarantee

Earn gift cards/discounts by submitting a review: www.novusbio.com/reviews/submit/NBP1-26668

Earn gift cards/discounts by submitting a publication using this product:
www.novusbio.com/publications

