

Product Datasheet

MLLT1 Antibody NBP1-26653

Unit Size: 0.1 ml

Store at 4C. Do not freeze.

www.novusbio.com



technical@novusbio.com

Publications: 1

Protocols, Publications, Related Products, Reviews, Research Tools and Images at:
www.novusbio.com/NBP1-26653

Updated 10/23/2024 v.20.1

Earn rewards for product
reviews and publications.

Submit a publication at www.novusbio.com/publications

Submit a review at www.novusbio.com/reviews/destination/NBP1-26653



NBP1-26653**MLLT1 Antibody**

| Product Information | |
|----------------------------|-----------------------------|
| Unit Size | 0.1 ml |
| Concentration | 0.2 mg/ml |
| Storage | Store at 4C. Do not freeze. |
| Clonality | Polyclonal |
| Preservative | 0.09% Sodium Azide |
| Isotype | IgG |
| Purity | Immunogen affinity purified |
| Buffer | TBS and 0.1% BSA |

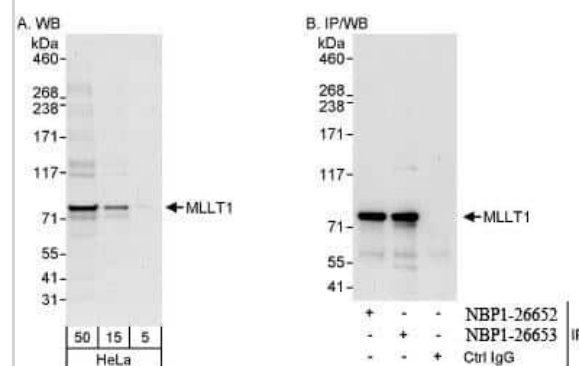
| Product Description | |
|----------------------------|--|
| Host | Rabbit |
| Gene ID | 4298 |
| Gene Symbol | MLLT1 |
| Species | Human |
| Immunogen | The immunogen recognized by this antibody maps to a region between residue 325 and 375 of human myeloid/lymphoid or mixed-lineage leukemia (trithorax homolog, Drosophila); translocated to, 1 using the numbering given in entry NP_005925.2 (GeneID 4298). |

| Product Application Details | |
|------------------------------------|---|
| Applications | Western Blot, Immunohistochemistry, Immunohistochemistry-Paraffin, Immunoprecipitation |
| Recommended Dilutions | Western Blot 1:2000-1:10000, Immunohistochemistry 1:100 - 1:500, Immunoprecipitation 2 - 10 ug/mg lysate, Immunohistochemistry-Paraffin 1:100-1:500 |
| Application Notes | Epitope retrieval with citrate buffer pH6.0 is recommended for FFPE tissue sections. |

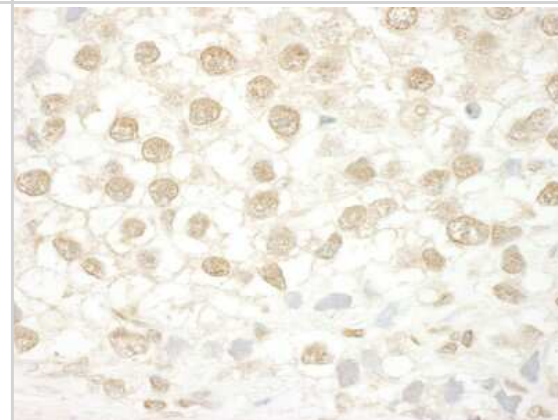


Images

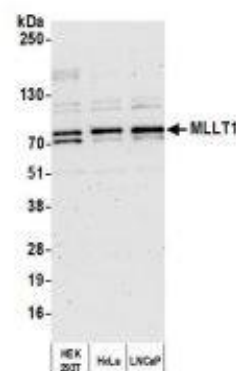
Western Blot: MLLT1 Antibody [NBP1-26653] - Whole cell lysate from HeLa cells. MLLT1 was also immunoprecipitated by rabbit anti-MLLT1 antibody NBP1-26652.



Immunohistochemistry-Paraffin: MLLT1 Antibody [NBP1-26653] - Sample: FFPE section of human testicular seminoma. Antibody: Affinity purified rabbit anti- MLLT1 used at a dilution of 1:200 (1ug/ml). Detection: DAB



Whole cell lysate (10 µg) from HEK293T, HeLa, and LNCaP cells prepared using NETN lysis buffer. Antibody: Affinity purified rabbit anti-MLLT1 antibody used for WB at 0.04 µg/ml. Detection: Chemiluminescence with an exposure time of 75 seconds.



Publications

Dittmar G, Hernandez D P et al. PRISMA: Protein Interaction Screen on Peptide Matrix Reveals Interaction Footprints and Modifications- Dependent Interactome of Intrinsically Disordered C/EBP beta. iScience 2019-03-29 [PMID: 30884312] (IP, Human)



Novus Biologicals USA

10730 E. Briarwood Avenue
Centennial, CO 80112
USA
Phone: 303.730.1950
Toll Free: 1.888.506.6887
Fax: 303.730.1966
nb-customerservice@bio-techne.com

Bio-Techne Canada

21 Canmotor Ave
Toronto, ON M8Z 4E6
Canada
Phone: 905.827.6400
Toll Free: 855.668.8722
Fax: 905.827.6402
canada.inquires@bio-techne.com

Bio-Techne Ltd

19 Barton Lane
Abingdon Science Park
Abingdon, OX14 3NB, United Kingdom
Phone: (44) (0) 1235 529449
Free Phone: 0800 37 34 15
Fax: (44) (0) 1235 533420
info.EMEA@bio-techne.com

General Contact Information

www.novusbio.com
Technical Support: nb-technical@bio-techne.com
Orders: nb-customerservice@bio-techne.com
General: novus@novusbio.com

Products Related to NBP1-26653

| | |
|---------------|---|
| HAF008 | Goat anti-Rabbit IgG Secondary Antibody [HRP] |
| NB7160 | Goat anti-Rabbit IgG (H+L) Secondary Antibody [HRP] |
| NBP2-24891 | Rabbit IgG Isotype Control |
| NBP1-84840PEP | MLLT1 Recombinant Protein Antigen |

Limitations

This product is for research use only and is not approved for use in humans or in clinical diagnosis. Primary Antibodies are guaranteed for 1 year from date of receipt.

For more information on our 100% guarantee, please visit www.novusbio.com/guarantee

Earn gift cards/discounts by submitting a review: www.novusbio.com/reviews/submit/NBP1-26653

Earn gift cards/discounts by submitting a publication using this product:
www.novusbio.com/publications

