

Product Datasheet

Proteinase 3/Myeloblastin/PRTN3 Antibody NBP1-25966

Unit Size: 0.1 ml

Store at 4C short term. Aliquot and store at -20C long term. Avoid freeze-thaw cycles.

www.novusbio.com



technical@novusbio.com

Publications: 2

Protocols, Publications, Related Products, Reviews, Research Tools and Images at:
www.novusbio.com/NBP1-25966

Updated 10/23/2024 v.20.1

Earn rewards for product
reviews and publications.

Submit a publication at www.novusbio.com/publications

Submit a review at www.novusbio.com/reviews/destination/NBP1-25966



NBP1-25966

Proteinase 3/Myeloblastin/PRTN3 Antibody

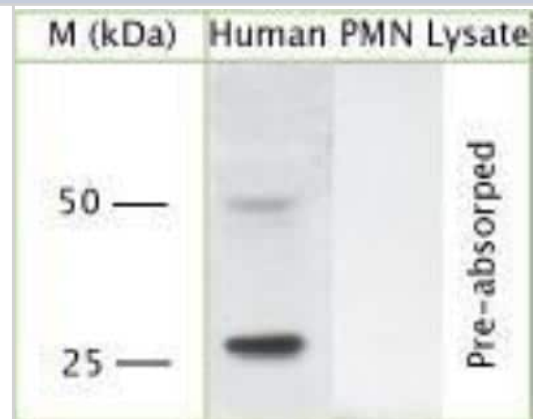
Product Information	
Unit Size	0.1 ml
Concentration	This product is unpurified. The exact concentration of antibody is not quantifiable.
Storage	Store at 4C short term. Aliquot and store at -20C long term. Avoid freeze-thaw cycles.
Clonality	Polyclonal
Preservative	No Preservative
Reconstitution Instructions	Reconstitute in 0.1 ml of sterile water. Centrifuge to remove any insoluble material. Glycerol may be added (1:1) for additional stability. Please note the sample size is provided in reconstituted format.
Isotype	IgG
Purity	Unpurified
Buffer	Lyophilized from whole antisera
Target Molecular Weight	28 kDa

Product Description	
Host	Rabbit
Gene ID	5657
Gene Symbol	PRTN3
Species	Human
Immunogen	A synthetic peptide from the c-terminal region of human Proteinase 3/Myeloblastin/PRTN3 conjugated to blue carrier protein was used as the antigen.

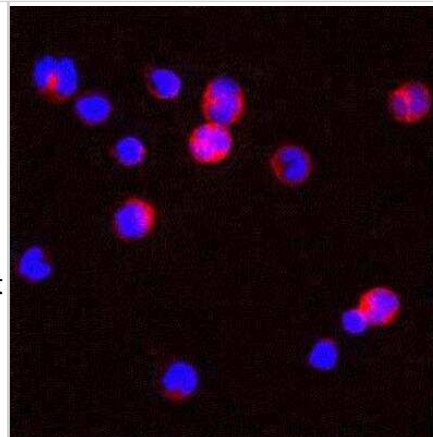
Product Application Details	
Applications	Western Blot, Flow Cytometry, Immunocytochemistry/ Immunofluorescence, Immunohistochemistry, Immunohistochemistry-Frozen, Immunohistochemistry-Paraffin
Recommended Dilutions	Western Blot 1:200-1:1000, Flow Cytometry 1:200-1:1000, Immunohistochemistry 1:200-1:1000, Immunocytochemistry/ Immunofluorescence 1:10-1:500, Immunohistochemistry-Paraffin 1:200-1:1000, Immunohistochemistry-Frozen 1:200-1:1000

Images

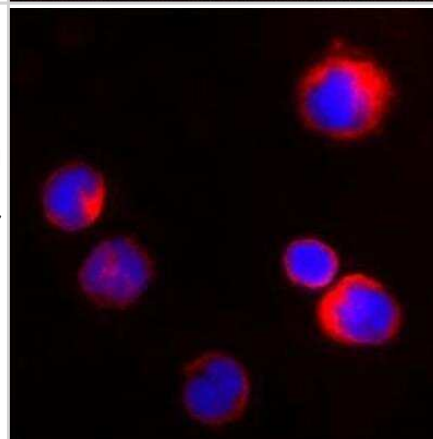
Western Blot: Proteinase 3/Myeloblastin/PRTN3 Antibody [NBP1-25966] - Human PMN (peripheral blood mononuclear cells isolated from buffycoat; denatured, reduced) using Rabbit antibody to c-terminal region of Pr3 (Wegener autoantigen): whole serum at 1: 500 dilution; blocked with 1% LFDM for 15 minutes at room temperature with shake, primary antibody incubated for 15 minutes at room temperature, washed 3 times with PBST, 5 minutes each. Secondary antibody was also incubated for 15 minutes at room temperature.



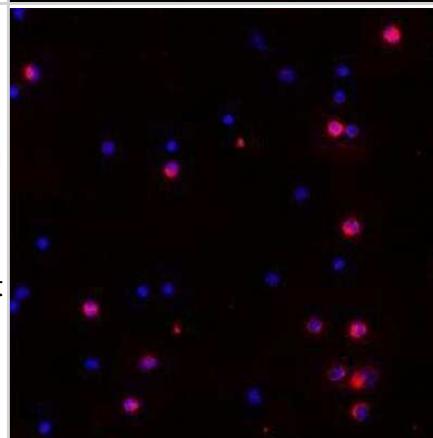
Immunocytochemistry/Immunofluorescence: Proteinase 3/Myeloblastin/PRTN3 Antibody [NBP1-25966] - Human PBMC were isolated and adjusted to 106 cells. Cells were fixed with 2% formaldehyde for 10 min at 37C. Washed twice with PBS before cytopspin the cells onto microscope slides. Cells were blocked with PBS containing 1%BSA for 20 min at RT. Excess of blocking solution was removed and cells were then incubated with Rabbit Ab to c-terminal region of Pr3 (Wegener autoantigen): whole serum for 30 min at RT (diluted 1:100 in the blocking buffer). Washed 3X with PBS and incubated with anti-Rabbit Alexa 586 for further 30 min. Washed as before and nuclear counterstained with DAPI. Neutrophils and Monocytes, known to have PR3 are intensely stained by the Rabbit Ab to c-terminal region of Pr3 (Wegener autoantigen): whole serum.



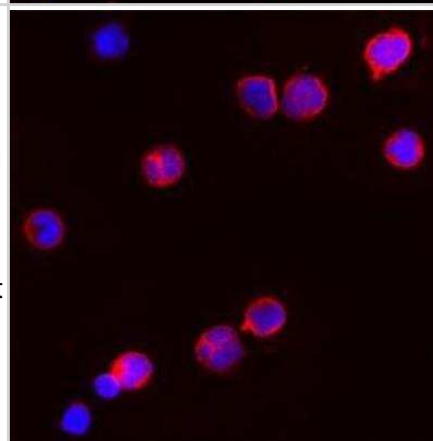
Immunocytochemistry/Immunofluorescence: Proteinase 3/Myeloblastin/PRTN3 Antibody [NBP1-25966] - Human PBMC were isolated and adjusted to 106 cells. Cells were fixed with 2% formaldehyde for 10min at 37C. Washed twice with PBS before cytopspin the cells onto microscope slides. Cells were blocked with PBS containing 1%BSA for 20min at RT. Excess blocking solution was removed and cells were incubated with Rabbit Ab to c-terminal region of Pr3 (Wegener autoantigen): whole serum for 30min at RT (diluted 1:100 in the blocking buffer). Washed 3X with PBS and incubated with anti-Rabbit Alexa 586 for further 30min. Washed as before and nuclear counterstained with DAPI. Neutrophils and Monocytes, known to have PR3 are intensely stained by the Rabbit Ab to c-terminal region of Pr3 (Wegener autoantigen): whole serum.



Immunocytochemistry/Immunofluorescence: Proteinase 3/Myeloblastin/PRTN3 Antibody [NBP1-25966] - Human PBMC were isolated and adjusted to 106 cells. Cells were fixed with 2% formaldehyde for 10min at 37C. Washed twice with PBS before cytopspin the cells onto microscope slides. Cells were blocked with PBS containing 1%BSA for 20min at RT. Excess of blocking solution was removed and cells were then incubated with Rabbit Ab to c-terminal region of Pr3 (Wegener autoantigen): whole serum for 30 min at RT (diluted 1:100 in the blocking buffer). Washed 3X with PBS and incubated with anti-Rabbit Alexa 586 for further 30 min. Washed as before and nuclear counterstained with DAPI. Neutrophils and Monocytes, known to have PR3 are intensely stained by the Rabbit Ab to c-terminal region of Pr3 (Wegener autoantigen): whole serum.



Immunocytochemistry/Immunofluorescence: Proteinase 3/Myeloblastin/PRTN3 Antibody [NBP1-25966] - Human PBMC were isolated and adjusted to 106 cells. Cells were fixed with 2% formaldehyde for 10 min at 37C. Washed twice with PBS before cytopspin the cells onto microscope slides. Cells were blocked with PBS containing 1%BSA for 20 min at RT. Excess of blocking solution was removed and cells were then incubated with Rabbit Ab to c-terminal region of Pr3 (Wegener autoantigen): whole serum for 30 min at RT (diluted 1:100 in the blocking buffer). Washed 3X with PBS and incubated with anti-Rabbit Alexa 586 for further 30 min. Washed as before and nuclear counterstained with DAPI. Neutrophils and Monocytes, known to have PR3 are intensely stained by the Rabbit Ab to c-terminal region of Pr3 (Wegener autoantigen): whole serum.



Publications

Kolonin Mikhail G, Sergeeva Anna, Staquicini Daniela I et al. Interaction between Tumor Cell Surface Receptor RAGE and Proteinase 3 Mediates Prostate Cancer Metastasis to Bone. *Cancer Research* 2017-04-20 [PMID: 28428279] (ICC/IF, Human)

Hao J, Wang C, Yuan J et al. A Pro-Inflammatory Role of C5L2 in C5a-Primed Neutrophils for ANCA-Induced Activation. *PLoS One* 2013-06-13 [PMID: 23785491] (FLOW, Human)





Novus Biologicals USA

10730 E. Briarwood Avenue
Centennial, CO 80112
USA
Phone: 303.730.1950
Toll Free: 1.888.506.6887
Fax: 303.730.1966
nb-customerservice@bio-techne.com

Bio-Techne Canada

21 Canmotor Ave
Toronto, ON M8Z 4E6
Canada
Phone: 905.827.6400
Toll Free: 855.668.8722
Fax: 905.827.6402
canada.inquires@bio-techne.com

Bio-Techne Ltd

19 Barton Lane
Abingdon Science Park
Abingdon, OX14 3NB, United Kingdom
Phone: (44) (0) 1235 529449
Free Phone: 0800 37 34 15
Fax: (44) (0) 1235 533420
info.EMEA@bio-techne.com

General Contact Information

www.novusbio.com
Technical Support: nb-technical@bio-techne.com
Orders: nb-customerservice@bio-techne.com
General: novus@novusbio.com

Products Related to NBP1-25966

HAF008	Goat anti-Rabbit IgG Secondary Antibody [HRP]
NB7160	Goat anti-Rabbit IgG (H+L) Secondary Antibody [HRP]
NBP2-24891	Rabbit IgG Isotype Control
H00005657-P01-10ug	Recombinant Human Proteinase 3/Myeloblastin/PRTN3 GST (N-Term) Protein

Limitations

This product is for research use only and is not approved for use in humans or in clinical diagnosis. Primary Antibodies are guaranteed for 1 year from date of receipt.

For more information on our 100% guarantee, please visit www.novusbio.com/guarantee

Earn gift cards/discounts by submitting a review: www.novusbio.com/reviews/submit/NBP1-25966

Earn gift cards/discounts by submitting a publication using this product:
www.novusbio.com/publications

