

Product Datasheet

CLASP2 Antibody - BSA Free

NBP1-21395

Unit Size: 0.1 ml

Store at 4C. Do not freeze.

www.novusbio.com



technical@novusbio.com

Publications: 2

Protocols, Publications, Related Products, Reviews, Research Tools and Images at:
www.novusbio.com/NBP1-21395

Updated 2/21/2025 v.20.1

Earn rewards for product
reviews and publications.

Submit a publication at www.novusbio.com/publications

Submit a review at www.novusbio.com/reviews/destination/NBP1-21395



NBP1-21395

CLASP2 Antibody - BSA Free

Product Information	
Unit Size	0.1 ml
Concentration	1.0 mg/ml
Storage	Store at 4C. Do not freeze.
Clonality	Polyclonal
Preservative	0.09% Sodium Azide
Isotype	IgG
Purity	Immunogen affinity purified
Buffer	Tris-Citrate/Phosphate (pH 7.0 - 8.0)

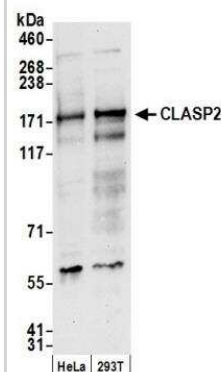
Product Description	
Host	Rabbit
Gene ID	23122
Gene Symbol	CLASP2
Species	Human, Mouse, Rat
Reactivity Notes	Rat reactivity reported in scientific literature (PMID: 22992739).
Immunogen	The immunogen recognized by this antibody maps to a region between residue 275 and 325 of human cytoplasmic linker associated protein 2 using the numbering given in entry BAG11221.1 (GeneID 23122).

Product Application Details	
Applications	Western Blot, Immunocytochemistry/ Immunofluorescence, Immunoprecipitation
Recommended Dilutions	Western Blot 1:2000-1:10000, Immunocytochemistry/ Immunofluorescence Reported in scientific literature (PMID: 22992739), Immunoprecipitation 2-10 ug/mg lysate

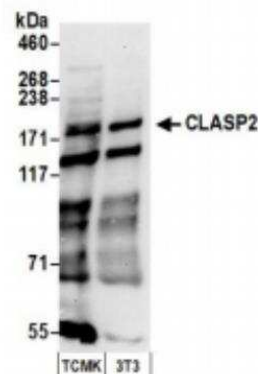


Images

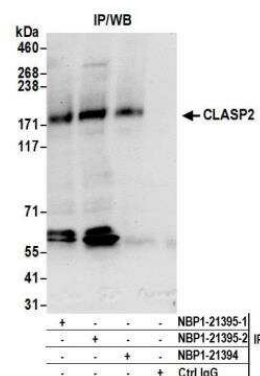
Western Blot: CLASP2 Antibody [NBP1-21395] - Detection of Human CLASP2 by Western Blot. Samples: Whole cell lysate (50 ug) from HeLa and 293T cells prepared using NETN lysis buffer. Antibody: Affinity purified rabbit anti-CLASP2 antibody NBP1-21395 used for WB at 0.1 ug/ml. Detection: Chemiluminescence with an exposure time of 10 seconds.



Western Blot: CLASP2 Antibody [NBP1-21395] - Whole cell lysate (50 ug) from TCMK-1 and NIH3T3 cells prepared using NETN lysis buffer. Antibody: Affinity purified rabbit anti-CLASP2 antibody used for WB at 0.4 ug/ml. Detection: Chemiluminescence with an exposure time of 30 seconds.



Immunoprecipitation: CLASP2 Antibody [NBP1-21395] - Detection of human CLASP2 by western blot of immunoprecipitates. Samples: Whole cell lysate (0.5 or 1.0 mg per IP reaction; 20% of IP loaded) from HeLa cells prepared using NETN lysis buffer. Antibody: Affinity purified rabbit anti-CLASP2 antibody NBP1-21395 (lot NBP1-21395-2) used for IP at 6 ug per reaction. CLASP2 was also immunoprecipitated by a previous lot of this antibody (NBP1-21395-1) and rabbit anti-CLASP2 antibody NBP1-21394. For blotting immunoprecipitated CLASP2, NBP1-21395 was used at 1 ug/ml. Detection: Chemiluminescence with an exposure time of 10 seconds.



Publications

Shahbazi MN, Pena-Jimenez D, Antonucci F et al. Clasp2 ensures mitotic fidelity and prevents differentiation of epidermal keratinocytes J. Cell. Sci 2017-01-09 [PMID: 28069833]

Langlais P, Dillon JL, Mengos A et al. Identification of a Role for CLASP2 in Insulin Action J Biol Chem 2012-09-19 [PMID: 22992739] (ICC/IF, WB, Rat)



Novus Biologicals USA

10730 E. Briarwood Avenue
Centennial, CO 80112
USA
Phone: 303.730.1950
Toll Free: 1.888.506.6887
Fax: 303.730.1966
nb-customerservice@bio-techne.com

Bio-Techne Canada

21 Canmotor Ave
Toronto, ON M8Z 4E6
Canada
Phone: 905.827.6400
Toll Free: 855.668.8722
Fax: 905.827.6402
canada.inquires@bio-techne.com

Bio-Techne Ltd

19 Barton Lane
Abingdon Science Park
Abingdon, OX14 3NB, United Kingdom
Phone: (44) (0) 1235 529449
Free Phone: 0800 37 34 15
Fax: (44) (0) 1235 533420
info.EMEA@bio-techne.com

General Contact Information

www.novusbio.com
Technical Support: nb-technical@bio-
techne.com
Orders: nb-customerservice@bio-techne.com
General: novus@novusbio.com

Products Related to NBP1-21395

HAF008	Goat anti-Rabbit IgG Secondary Antibody [HRP]
NB7160	Goat anti-Rabbit IgG (H+L) Secondary Antibody [HRP]
NBP2-24891	Rabbit IgG Isotype Control
H00023122-P01-10ug	Recombinant Human CLASP2 GST (N-Term) Protein

Limitations

This product is for research use only and is not approved for use in humans or in clinical diagnosis. Primary Antibodies are guaranteed for 1 year from date of receipt.

For more information on our 100% guarantee, please visit www.novusbio.com/guarantee

Earn gift cards/discounts by submitting a review: www.novusbio.com/reviews/submit/NBP1-21395

Earn gift cards/discounts by submitting a publication using this product:
www.novusbio.com/publications

