

Product Datasheet

RELM beta Antibody NBP1-20968

Unit Size: 0.1 mg

Store at -20C. Avoid freeze-thaw cycles.

www.novusbio.com



technical@novusbio.com

Publications: 1

Protocols, Publications, Related Products, Reviews, Research Tools and Images at:
www.novusbio.com/NBP1-20968

Updated 9/9/2025 v.20.1

Earn rewards for product
reviews and publications.

Submit a publication at www.novusbio.com/publications

Submit a review at www.novusbio.com/reviews/destination/NBP1-20968



NBP1-20968

RELM beta Antibody

Product Information

Unit Size	0.1 mg
Concentration	0.5 mg/ml
Storage	Store at -20C. Avoid freeze-thaw cycles.
Clonality	Polyclonal
Preservative	0.02% Sodium Azide
Isotype	IgG
Purity	Immunogen affinity purified
Buffer	Tris saline (20 mM Tris pH 7.3, 150 mM NaCl), 0.5% BSA

Product Description

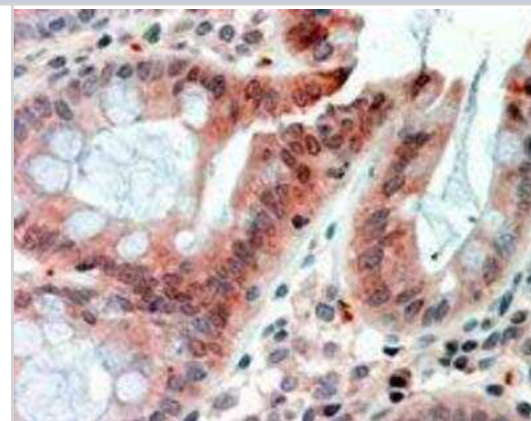
Description	Novus Biologicals Goat RELM beta Antibody (NBP1-20968) is a polyclonal antibody validated for use in IHC and ELISA. Anti-RELM beta Antibody: Cited in 1 publication. All Novus Biologicals antibodies are covered by our 100% guarantee.
Host	Goat
Gene ID	84666
Gene Symbol	RETNLB
Species	Human
Immunogen	Peptide with sequence C-DSVMDKKIKDVLNS corresponding to internal region according to NP_115968.1.

Product Application Details

Applications	Immunohistochemistry-Paraffin, Immunohistochemistry, Peptide ELISA
Recommended Dilutions	Immunohistochemistry 2 - 4 ug/ml, Immunohistochemistry-Paraffin 2 - 4 ug/ml, Peptide ELISA Detection limit 1:128000
Application Notes	WB: Preliminary experiments gave an approx. 35 kDa band in human Ileum and duodenum lysates after 0.1 ug/ml antibody staining. Please note that currently we cannot find an explanation in the literature for the band we observe given the calculated size of 11.7 kDa band according to NP_115968.1. The 35 kDa band was successfully blocked by incubation with the immunizing peptide. IHC-P: Human colon shows textured staining of cytoplasm in enterocytes.

Images

Immunohistochemistry-Paraffin: RELM beta Antibody [NBP1-20968] - NBP1-20968 (2.5g/ml) staining of paraffin embedded Human Colon. Steamed antigen retrieval with citrate buffer pH 6, AP-staining.



Publications

McVay LD, Keilbaugh SA, Wong TM et al. Absence of bacterially induced RELMbeta reduces injury in the dextran sodium sulfate model of colitis. J Clin Invest 2006-11-01 [PMID: 17024245]





Novus Biologicals USA

10730 E. Briarwood Avenue
Centennial, CO 80112
USA
Phone: 303.730.1950
Toll Free: 1.888.506.6887
Fax: 303.730.1966
nb-customerservice@bio-techne.com

Bio-Techne Canada

21 Canmotor Ave
Toronto, ON M8Z 4E6
Canada
Phone: 905.827.6400
Toll Free: 855.668.8722
Fax: 905.827.6402
canada.inquires@bio-techne.com

Bio-Techne Ltd

19 Barton Lane
Abingdon Science Park
Abingdon, OX14 3NB, United Kingdom
Phone: (44) (0) 1235 529449
Free Phone: 0800 37 34 15
Fax: (44) (0) 1235 533420
info.EMEA@bio-techne.com

General Contact Information

www.novusbio.com
Technical Support: nb-technical@bio-techne.com
Orders: nb-customerservice@bio-techne.com
General: novus@novusbio.com

Products Related to NBP1-20968

HAF017	Rabbit anti-Goat IgG Secondary Antibody [HRP (Horseradish Peroxidase)]
HAF109	Donkey anti-Goat IgG Secondary Antibody [HRP (Horseradish Peroxidase)]
NB410-28088-1mg	Goat IgG Isotype Control
NBP2-13218PEP	RELM beta Recombinant Protein Antigen

Limitations

This product is for research use only and is not approved for use in humans or in clinical diagnosis. Primary Antibodies are guaranteed for 1 year from date of receipt.

For more information on our 100% guarantee, please visit www.novusbio.com/guarantee

Earn gift cards/discounts by submitting a review: www.novusbio.com/reviews/submit/NBP1-20968

Earn gift cards/discounts by submitting a publication using this product:
www.novusbio.com/publications



