

Product Datasheet

SAM68 Antibody NBP1-19151

Unit Size: 0.1 ml

Store at 4C. Do not freeze.

www.novusbio.com



technical@novusbio.com

Reviews: 1 Publications: 2

Protocols, Publications, Related Products, Reviews, Research Tools and Images at:
www.novusbio.com/NBP1-19151

Updated 10/28/2024 v.20.1

**Earn rewards for product
reviews and publications.**

Submit a publication at www.novusbio.com/publications

Submit a review at www.novusbio.com/reviews/destination/NBP1-19151



NBP1-19151

SAM68 Antibody

Product Information	
Unit Size	0.1 ml
Concentration	0.2 mg/ml
Storage	Store at 4C. Do not freeze.
Clonality	Polyclonal
Preservative	0.09% Sodium Azide
Isotype	IgG
Purity	Immunogen affinity purified
Buffer	TBS and 0.1% BSA

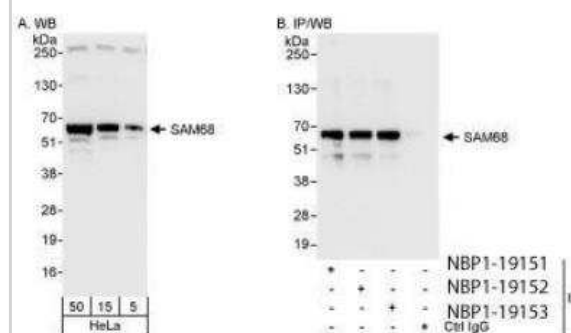
Product Description	
Host	Rabbit
Gene ID	10657
Gene Symbol	KHDRBS1
Species	Human, Bovine, Mammal
Reactivity Notes	Mammal reactivity reported in scientific literature (PMID: 27180817). Bovine reactivity reported in scientific literature (PMID: 22280896).
Immunogen	The epitope this antibody maps to a region between residue 1 and 50 of human SAM68 (KH domain containing, RNA binding, signal transduction associated 1) NP_006550.1 (GeneID 10657).

Product Application Details	
Applications	Western Blot, Immunocytochemistry/ Immunofluorescence, Immunohistochemistry, Immunohistochemistry-Paraffin, Immunoprecipitation
Recommended Dilutions	Western Blot 1:2000-1:10000, Immunohistochemistry 1:500 - 1:2000, Immunocytochemistry/ Immunofluorescence Reported in scientific literature (PMID: 22280896), Immunoprecipitation 2-5 ug/mg lysate, Immunohistochemistry-Paraffin 1:500 - 1:2000
Application Notes	Epitope retrieval with citrate buffer pH6.0 is recommended for FFPE tissue sections.

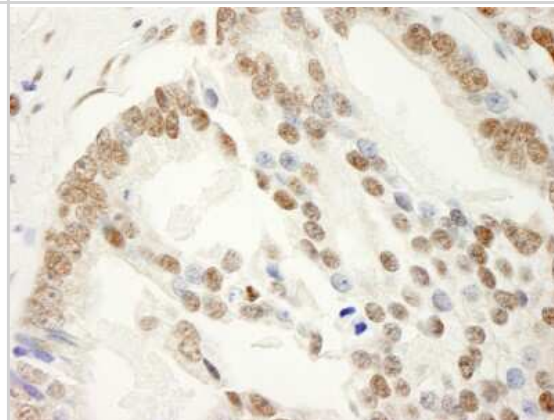


Images

Western Blot: SAM68 Antibody [NBP1-19151] - Whole cell lysate from HeLa cells. SAM68 was also immunoprecipitated by rabbit anti-SAM68 antibodies NBP1-19152 and NBP1-19153.



Immunohistochemistry-Paraffin: SAM68 Antibody [NBP1-19151] - Section of human prostate carcinoma. Antibody: Affinity purified rabbit anti- SAM68 used at a dilution of 1:1,000 (0.2 ug/ml). Detection: DAB



Publications

Lawrence P, Schafer EA, Rieder E. The nuclear protein Sam68 is cleaved by the FMDV 3C protease redistributing Sam68 to the cytoplasm during FMDV infection of host cells. *Virology*. 2012-03-30 [PMID: 22280896] (ICC/IF, WB, Bovine, Human)

Mandal A, Mandal S, Park MH. Global quantitative proteomics reveal up-regulation of endoplasmic reticulum stress response proteins upon depletion of eIF5A in HeLa cells. *Nature Publishing Group*. 2016-05-16 [PMID: 27180817] (WB, Mammal)



Novus Biologicals USA

10730 E. Briarwood Avenue
Centennial, CO 80112
USA
Phone: 303.730.1950
Toll Free: 1.888.506.6887
Fax: 303.730.1966
nb-customerservice@bio-techne.com

Bio-Techne Canada

21 Canmotor Ave
Toronto, ON M8Z 4E6
Canada
Phone: 905.827.6400
Toll Free: 855.668.8722
Fax: 905.827.6402
canada.inquires@bio-techne.com

Bio-Techne Ltd

19 Barton Lane
Abingdon Science Park
Abingdon, OX14 3NB, United Kingdom
Phone: (44) (0) 1235 529449
Free Phone: 0800 37 34 15
Fax: (44) (0) 1235 533420
info.EMEA@bio-techne.com

General Contact Information

www.novusbio.com
Technical Support: nb-technical@bio-techne.com
Orders: nb-customerservice@bio-techne.com
General: novus@novusbio.com

Products Related to NBP1-19151

HAF008	Goat anti-Rabbit IgG Secondary Antibody [HRP]
NB7160	Goat anti-Rabbit IgG (H+L) Secondary Antibody [HRP]
NBP2-24891	Rabbit IgG Isotype Control
H00010657-P01-10ug	Recombinant Human SAM68 GST (N-Term) Protein

Limitations

This product is for research use only and is not approved for use in humans or in clinical diagnosis. Primary Antibodies are guaranteed for 1 year from date of receipt.

For more information on our 100% guarantee, please visit www.novusbio.com/guarantee

Earn gift cards/discounts by submitting a review: www.novusbio.com/reviews/submit/NBP1-19151

Earn gift cards/discounts by submitting a publication using this product:
www.novusbio.com/publications

