

# Product Datasheet

## Podoplanin Antibody (18H5) [Biotin] NBP1-18600

Unit Size: 0.05 mg

Store at 4C short term. Aliquot and store at -20C long term. Avoid freeze-thaw cycles.

[www.novusbio.com](http://www.novusbio.com)



[technical@novusbio.com](mailto:technical@novusbio.com)

Protocols, Publications, Related Products, Reviews, Research Tools and Images at:  
[www.novusbio.com/NBP1-18600](http://www.novusbio.com/NBP1-18600)

Updated 10/23/2024 v.20.1

Earn rewards for product  
reviews and publications.

Submit a publication at [www.novusbio.com/publications](http://www.novusbio.com/publications)

Submit a review at [www.novusbio.com/reviews/destination/NBP1-18600](http://www.novusbio.com/reviews/destination/NBP1-18600)



**NBP1-18600**

Podoplanin Antibody (18H5) [Biotin]

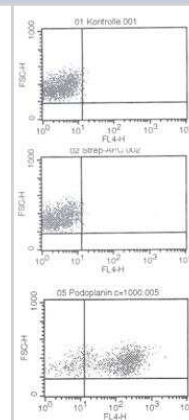
Product Information	
Unit Size	0.05 mg
Concentration	LYOPH mg/ml
Storage	Store at 4C short term. Aliquot and store at -20C long term. Avoid freeze-thaw cycles.
Clonality	Monoclonal
Clone	18H5
Preservative	0.02% Sodium Azide
Reconstitution Instructions	Centrifuge vial prior to opening. Reconstitute in sterile water to a concentration of 0.1-1.0 mg/ml.
Isotype	IgG1
Conjugate	Biotin
Purity	Protein G purified
Buffer	PBS and 50X BSA

Product Description	
Host	Mouse
Gene ID	10630
Gene Symbol	PDPN
Species	Human
Marker	Lymphatic Endothelium Marker
Immunogen	MDCK cells stably expressing gp36 (Podoplanin) protein

Product Application Details	
Applications	Western Blot, ELISA, Flow Cytometry, Immunocytochemistry/Immunofluorescence
Recommended Dilutions	Western Blot 1-5 ug/ml, Flow Cytometry, ELISA, Immunocytochemistry/Immunofluorescence

**Images**

Flow Cytometry: Podoplanin Antibody (18H5) [Biotin] [NBP1-18600] - Analysis with primary human dermal microvascular endothelial cells (HDMVEC). Upper panel: no primary antibody; Middle panel: solely conjugated secondary antibody; Lower panel: Biotin-conjugated anti-human Podoplanin.





### **Novus Biologicals USA**

10730 E. Briarwood Avenue  
Centennial, CO 80112  
USA  
Phone: 303.730.1950  
Toll Free: 1.888.506.6887  
Fax: 303.730.1966  
nb-customerservice@bio-techne.com

### **Bio-Techne Canada**

21 Canmotor Ave  
Toronto, ON M8Z 4E6  
Canada  
Phone: 905.827.6400  
Toll Free: 855.668.8722  
Fax: 905.827.6402  
canada.inquires@bio-techne.com

### **Bio-Techne Ltd**

19 Barton Lane  
Abingdon Science Park  
Abingdon, OX14 3NB, United Kingdom  
Phone: (44) (0) 1235 529449  
Free Phone: 0800 37 34 15  
Fax: (44) (0) 1235 533420  
info.EMEA@bio-techne.com

### **General Contact Information**

www.novusbio.com  
Technical Support: nb-technical@bio-techne.com  
Orders: nb-customerservice@bio-techne.com  
General: novus@novusbio.com

### **Products Related to NBP1-18600**

---

NBP2-29370	Streptavidin Native Protein
NBP1-96888	Mouse IgG1 Isotype Control (MG1) [Biotin]
NBC1-18511	Recombinant Human Podoplanin His Protein
DVE00	VEGF [HRP]

---

### **Limitations**

This product is for research use only and is not approved for use in humans or in clinical diagnosis. Primary Antibodies are guaranteed for 1 year from date of receipt.

For more information on our 100% guarantee, please visit [www.novusbio.com/guarantee](http://www.novusbio.com/guarantee)

Earn gift cards/discounts by submitting a review: [www.novusbio.com/reviews/submit/NBP1-18600](http://www.novusbio.com/reviews/submit/NBP1-18600)

Earn gift cards/discounts by submitting a publication using this product:  
[www.novusbio.com/publications](http://www.novusbio.com/publications)

