

Product Datasheet

ARHGEF11 Antibody NBP1-06553

Unit Size: 0.1 ml

Store at 4C. Do not freeze.

www.novusbio.com



technical@novusbio.com

Publications: 2

Protocols, Publications, Related Products, Reviews, Research Tools and Images at:
www.novusbio.com/NBP1-06553

Updated 10/23/2024 v.20.1

Earn rewards for product
reviews and publications.

Submit a publication at www.novusbio.com/publications

Submit a review at www.novusbio.com/reviews/destination/NBP1-06553



NBP1-06553

ARHGEF11 Antibody

Product Information	
Unit Size	0.1 ml
Concentration	0.2 mg/ml
Storage	Store at 4C. Do not freeze.
Clonality	Polyclonal
Preservative	0.09% Sodium Azide
Isotype	IgG
Purity	Immunogen affinity purified
Buffer	TBS and 0.1% BSA

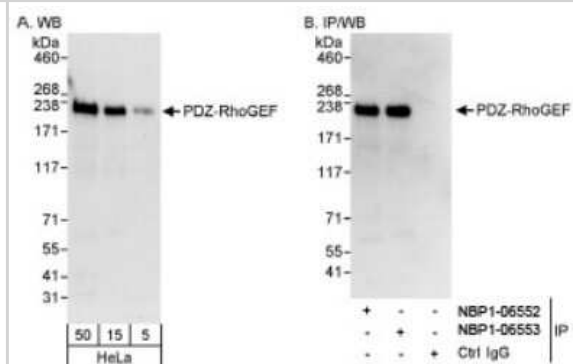
Product Description	
Host	Rabbit
Gene ID	9826
Gene Symbol	ARHGEF11
Species	Human
Immunogen	The immunogen recognized by this antibody maps to a region between residue 1472 and 1522 of human PDZ-RhoGEF using the numbering given in entry NP_055599.1 (GeneID 9826).

Product Application Details	
Applications	Western Blot, Immunocytochemistry/ Immunofluorescence, Immunohistochemistry, Immunohistochemistry-Paraffin, Immunoprecipitation
Recommended Dilutions	Western Blot 1:2000-1:10000, Immunohistochemistry 1:100-1:500, Immunocytochemistry/ Immunofluorescence, Immunoprecipitation 2-5 ug/mg lysate, Immunohistochemistry-Paraffin 1:100-1:500
Application Notes	Epitope retrieval with citrate buffer pH6.0 is recommended for FFPE tissue sections. Use in ICC/IF reported in scientific literature (PMID: 30219706).



Images

Western Blot: ARHGEF11 Antibody [NBP1-06553] - Whole cell lysate (5, 15 and 50 ug for WB; 1 mg for IP, 20% of IP loaded) from HeLa cells. NBP1-06553 used for WB at 0.04 ug/ml (A) and 1 ug/ml (B) and used for IP at 3 ug/mg lysate. PDZ-RhoGEF was also immunoprecipitated by NBP1-06552, which recognizes an upstream epitope.



Immunohistochemistry-Paraffin: ARHGEF11 Antibody [NBP1-06553] - Sample: FFPE section of human prostate carcinoma. Antibody: Affinity purified rabbit anti- PDZ-RhoGEF used at a dilution of 1:200 (1ug/ml). Detection: DAB



Publications

Ding Z, Dong Z, Yang Y Et Al. The guanine nucleotide exchange factor, LARG, and RhoC play a role in glioblastoma cell invasion and resistance Am. J. Pathol. 2020-07-18 [PMID: 32693062]

Ding Z, Dhruv H, Kwiatkowska-Piwowarczyk A et al. PDZ-RhoGEF Is a Signaling Effector for TROY-Induced Glioblastoma Cell Invasion and Survival. Neoplasia 2018-10-01 [PMID: 30219706] (ICC/IF, Human)



Novus Biologicals USA

10730 E. Briarwood Avenue
Centennial, CO 80112
USA
Phone: 303.730.1950
Toll Free: 1.888.506.6887
Fax: 303.730.1966
nb-customerservice@bio-techne.com

Bio-Techne Canada

21 Canmotor Ave
Toronto, ON M8Z 4E6
Canada
Phone: 905.827.6400
Toll Free: 855.668.8722
Fax: 905.827.6402
canada.inquires@bio-techne.com

Bio-Techne Ltd

19 Barton Lane
Abingdon Science Park
Abingdon, OX14 3NB, United Kingdom
Phone: (44) (0) 1235 529449
Free Phone: 0800 37 34 15
Fax: (44) (0) 1235 533420
info.EMEA@bio-techne.com

General Contact Information

www.novusbio.com
Technical Support: nb-technical@bio-techne.com
Orders: nb-customerservice@bio-techne.com
General: novus@novusbio.com

Products Related to NBP1-06553

HAF008	Goat anti-Rabbit IgG Secondary Antibody [HRP]
NB7160	Goat anti-Rabbit IgG (H+L) Secondary Antibody [HRP]
NBP2-24891	Rabbit IgG Isotype Control
H00009826-Q01-10ug	Recombinant Human ARHGEF11 GST (N-Term) Protein

Limitations

This product is for research use only and is not approved for use in humans or in clinical diagnosis. Primary Antibodies are guaranteed for 1 year from date of receipt.

For more information on our 100% guarantee, please visit www.novusbio.com/guarantee

Earn gift cards/discounts by submitting a review: www.novusbio.com/reviews/submit/NBP1-06553

Earn gift cards/discounts by submitting a publication using this product:
www.novusbio.com/publications

