

# Product Datasheet

## NELF-E Antibody - BSA Free

### NBP1-05978

Unit Size: 100 ul

Store at 4C. Do not freeze.

[www.novusbio.com](http://www.novusbio.com)



[technical@novusbio.com](mailto:technical@novusbio.com)

Protocols, Publications, Related Products, Reviews, Research Tools and Images at:  
[www.novusbio.com/NBP1-05978](http://www.novusbio.com/NBP1-05978)

Updated 9/9/2025 v.20.1

Earn rewards for product  
reviews and publications.

Submit a publication at [www.novusbio.com/publications](http://www.novusbio.com/publications)

Submit a review at [www.novusbio.com/reviews/destination/NBP1-05978](http://www.novusbio.com/reviews/destination/NBP1-05978)



**NBP1-05978**

NELF-E Antibody - BSA Free

| Product Information     |                                       |
|-------------------------|---------------------------------------|
| Unit Size               | 100 ul                                |
| Concentration           | 1.0 mg/ml                             |
| Storage                 | Store at 4C. Do not freeze.           |
| Clonality               | Polyclonal                            |
| Preservative            | 0.09% Sodium Azide                    |
| Isotype                 | IgG                                   |
| Purity                  | Immunogen affinity purified           |
| Buffer                  | Tris-Citrate/Phosphate (pH 7.0 - 8.0) |
| Target Molecular Weight | 43 kDa                                |

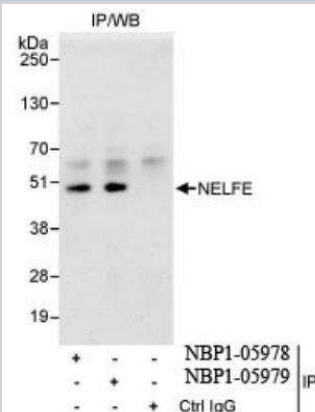
| Product Description |   |
|---------------------|---|
| Description         | Novus Biologicals Rabbit NELF-E Antibody - BSA Free (NBP1-05978) is a polyclonal antibody validated for use in WB and IP. All Novus Biologicals antibodies are covered by our 100% guarantee.         |
| Host                | Rabbit  |
| Gene ID             | 7936  |
| Gene Symbol         | NELFE   |
| Species             | Human   |
| Immunogen           | The immunogen recognized by this antibody maps to a region between residue 75 and 125 of human negative elongation factor polypeptide E using the numbering given in entry NP_002895.3 (GeneID 7936). |

| Product Application Details |  |
|-----------------------------|--|
| Applications                | Western Blot, Immunoprecipitation                                |
| Recommended Dilutions       | Western Blot 1:1000-1:5000, Immunoprecipitation 2-5 ug/mg lysate |

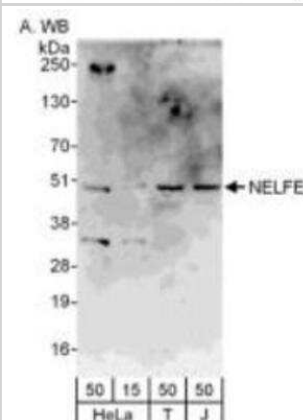


## Images

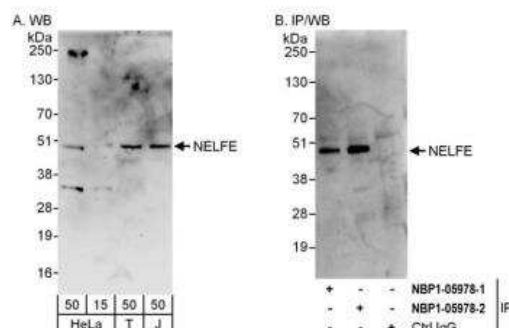
Western Blot: NELF-E Antibody [NBP1-05978] - Whole cell lysate (1 mg for IP, 20% of IP loaded) from HeLa cells. Antibodies: Affinity purified rabbit anti-NELFE antibody used for IP at 3 mcg/mg lysate. NELFE was also immunoprecipitated by rabbit anti-NELFE antibody NBP1-05979, which recognizes a downstream epitope.



Western Blot: NELF-E Antibody [NBP1-05978] - Detection of whole cell lysate from HeLa (15 & 50 ug), 293T (50 ug) and Jurkat (50 ug) cells, with diluted at 0.4 ug/ml.



Immunoprecipitation: NELF-E Antibody [NBP1-05978] - Detection of human NELFE by western blot and immunoprecipitation. Samples: Whole cell lysate from HeLa (15 and 50 ug for WB; 1 mg for IP, 20% of IP loaded), HEK293T (T; 50 ug) and Jurkat (J; 50 ug) cells. Antibodies: Affinity purified rabbit anti-NELFE antibody A301-913A (lot A301-913A-2) used for WB at 0.4 ug/ml (A) and 1 ug/ml (B) and used for IP at 6 ug/mg lysate. NELFE was also immunoprecipitated by a previous lot (lot A301-913A-1) of this antibody. Detection: Chemiluminescence with exposure times of 3 minutes (A) and 30 seconds (B).





### **Novus Biologicals USA**

10730 E. Briarwood Avenue  
Centennial, CO 80112  
USA  
Phone: 303.730.1950  
Toll Free: 1.888.506.6887  
Fax: 303.730.1966  
nb-customerservice@bio-techne.com

### **Bio-Techne Canada**

21 Canmotor Ave  
Toronto, ON M8Z 4E6  
Canada  
Phone: 905.827.6400  
Toll Free: 855.668.8722  
Fax: 905.827.6402  
canada.inquires@bio-techne.com

### **Bio-Techne Ltd**

19 Barton Lane  
Abingdon Science Park  
Abingdon, OX14 3NB, United Kingdom  
Phone: (44) (0) 1235 529449  
Free Phone: 0800 37 34 15  
Fax: (44) (0) 1235 533420  
info.EMEA@bio-techne.com

### **General Contact Information**

www.novusbio.com  
Technical Support: nb-technical@bio-techne.com  
Orders: nb-customerservice@bio-techne.com  
General: novus@novusbio.com

### **Products Related to NBP1-05978**

---

|                  |   |
|------------------|---|
| HAF008           | Goat anti-Rabbit IgG Secondary Antibody [HRP]       |
| NB7160           | Goat anti-Rabbit IgG (H+L) Secondary Antibody [HRP] |
| NBP2-24891       | Rabbit IgG Isotype Control                          |
| NBP1-51044-0.1mg | Recombinant Human NELF-E His Protein                |

---

### **Limitations**

This product is for research use only and is not approved for use in humans or in clinical diagnosis. Primary Antibodies are guaranteed for 1 year from date of receipt.

For more information on our 100% guarantee, please visit [www.novusbio.com/guarantee](http://www.novusbio.com/guarantee)

Earn gift cards/discounts by submitting a review: [www.novusbio.com/reviews/submit/NBP1-05978](http://www.novusbio.com/reviews/submit/NBP1-05978)

Earn gift cards/discounts by submitting a publication using this product:  
[www.novusbio.com/publications](http://www.novusbio.com/publications)

