

Product Datasheet

Clathrin light chain + heavy chain Antibody NBP1-05035

Unit Size: 0.1 mg

Store at -20C. Avoid freeze-thaw cycles.

www.novusbio.com



technical@novusbio.com

Publications: 3

Protocols, Publications, Related Products, Reviews, Research Tools and Images at:
www.novusbio.com/NBP1-05035

Updated 10/23/2024 v.20.1

Earn rewards for product
reviews and publications.

Submit a publication at www.novusbio.com/publications

Submit a review at www.novusbio.com/reviews/destination/NBP1-05035



NBP1-05035

Clathrin light chain + heavy chain Antibody

Product Information	
Unit Size	0.1 mg
Concentration	0.5 mg/ml
Storage	Store at -20C. Avoid freeze-thaw cycles.
Clonality	Polyclonal
Preservative	0.02% Sodium Azide
Isotype	IgG
Purity	Immunogen affinity purified
Buffer	Tris saline (20 mM Tris pH 7.3, 150 mM NaCl), 0.5% BSA

Product Description	
Host	Goat
Gene ID	1211
Gene Symbol	CLTA
Species	Human, Rat
Reactivity Notes	Use in Rat reported in scientific literature (PMID:24876496).
Specificity/Sensitivity	This antibody is expected to recognize all reported isoforms of light chains a and b.
Immunogen	Peptide with sequence CDFNPKSSKQAKD corresponding to internal region according to NP_009027.1, NP_001070145.1, NP_001825.1, NP_009028.1.

Product Application Details	
Applications	Western Blot, Immunohistochemistry, Immunohistochemistry-Paraffin, Peptide ELISA
Recommended Dilutions	Western Blot 0.1-0.3 ug/ml, Immunohistochemistry, Immunohistochemistry-Paraffin 2.5 ug/ml, Peptide ELISA Detection limit 1:32000
Application Notes	Western blot: Approx. 35kDa and 22-23kDa bands observed in Human Brain (Frontal Cortex) lysates (calculated MW of 23.2kDa according to NP_001825.1). The observed molecular weight of ~35kDa corresponds to earlier findings in literature with different antibodies (Okamoto et al, Am J Physiol Cell Physiol. 2000 Sep;279(3):C833-51.; PMID: 10942733).Primary incubation was 1 hour. IHC: Paraffin embedded Human Spleen.

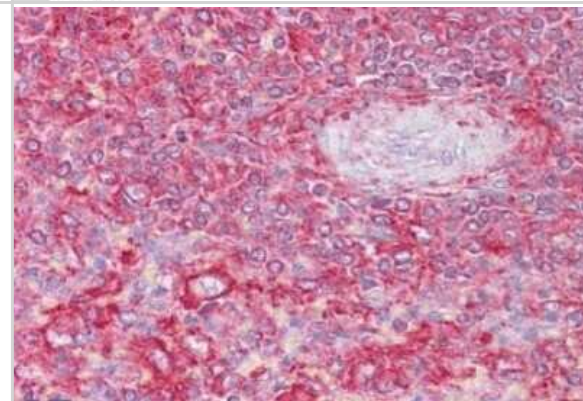


Images

Western Blot: Clathrin light chain + heavy chain Antibody [NBP1-05035] - (0.1ug/ml) staining of Human Frontal Cortex lysate (35ug protein in RIPA buffer). Detected by chemiluminescence.

250kDa
150kDa
100kDa
75kDa
50kDa
37kDa
25kDa
20kDa
15kDa

Immunohistochemistry-Paraffin: Clathrin light chain + heavy chain Antibody [NBP1-05035] - (2.5ug/ml) staining of paraffin embedded Human Spleen. Steamed antigen retrieval with citrate buffer pH 6, AP-staining.



Publications

Wilhelm B G, Mandad S et al. Composition of isolated synaptic boutons reveals the amounts of vesicle trafficking proteins. Science 2014-05-30 [PMID: 24876496] (WB, Rat)

Poupon V, Girard M, Legendre-Guillemain V et al. Clathrin light chains function in mannose phosphate receptor trafficking via regulation of actin assembly. Proc Natl Acad Sci U S A 2008-01-08 [PMID: 18165318]

Okamoto CT, Duman JG, Tyagarajan K et al. Clathrin in gastric acid secretory (parietal) cells: biochemical characterization and subcellular localization. Am J Physiol Cell Physiol 2000-09-01 [PMID: 10942733]



Novus Biologicals USA

10730 E. Briarwood Avenue
Centennial, CO 80112
USA
Phone: 303.730.1950
Toll Free: 1.888.506.6887
Fax: 303.730.1966
nb-customerservice@bio-techne.com

Bio-Techne Canada

21 Canmotor Ave
Toronto, ON M8Z 4E6
Canada
Phone: 905.827.6400
Toll Free: 855.668.8722
Fax: 905.827.6402
canada.inquires@bio-techne.com

Bio-Techne Ltd

19 Barton Lane
Abingdon Science Park
Abingdon, OX14 3NB, United Kingdom
Phone: (44) (0) 1235 529449
Free Phone: 0800 37 34 15
Fax: (44) (0) 1235 533420
info.EMEA@bio-techne.com

General Contact Information

www.novusbio.com
Technical Support: nb-technical@bio-techne.com
Orders: nb-customerservice@bio-techne.com
General: novus@novusbio.com

Products Related to NBP1-05035

HAF017	Rabbit anti-Goat IgG Secondary Antibody [HRP (Horseradish Peroxidase)]
HAF109	Donkey anti-Goat IgG Secondary Antibody [HRP (Horseradish Peroxidase)]
NB410-28088-1mg	Goat IgG Isotype Control
7268-CT-100	CTLA-4 [Unconjugated]

Limitations

This product is for research use only and is not approved for use in humans or in clinical diagnosis. Primary Antibodies are guaranteed for 1 year from date of receipt.

For more information on our 100% guarantee, please visit www.novusbio.com/guarantee

Earn gift cards/discounts by submitting a review: www.novusbio.com/reviews/submit/NBP1-05035

Earn gift cards/discounts by submitting a publication using this product:
www.novusbio.com/publications



