

Product Datasheet

PSMA/FOLH1/NAALADase I Antibody (k1H7) - BSA Free NBP1-04338

Unit Size: 0.1 ml

Store at 4C short term. Aliquot and store at -20C long term. Avoid freeze-thaw cycles.

www.novusbio.com



technical@novusbio.com

Publications: 1

Protocols, Publications, Related Products, Reviews, Research Tools and Images at:
www.novusbio.com/NBP1-04338

Updated 10/23/2024 v.20.1

Earn rewards for product
reviews and publications.

Submit a publication at www.novusbio.com/publications

Submit a review at www.novusbio.com/reviews/destination/NBP1-04338



NBP1-04338

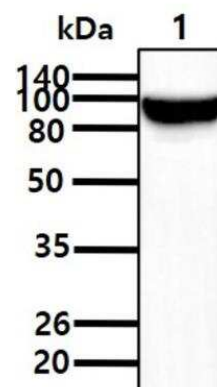
PSMA/FOLH1/NAALADase I Antibody (k1H7) - BSA Free

Product Information	
Unit Size	0.1 ml
Concentration	1.0 mg/ml
Storage	Store at 4C short term. Aliquot and store at -20C long term. Avoid freeze-thaw cycles.
Clonality	Monoclonal
Clone	k1H7
Preservative	0.02% Sodium Azide
Isotype	IgG1 Kappa
Purity	Protein G purified
Buffer	PBS (pH 7.4), 10% Glycerol
Product Description	
Host	Mouse
Gene ID	2346
Gene Symbol	FOLH1
Species	Human
Immunogen	Recombinant human PSMA/FOHL1/NAALADase I (117-351aa) purified from E. coli (NP_001014986).
Product Application Details	
Applications	Western Blot, ELISA, Immunocytochemistry/ Immunofluorescence
Recommended Dilutions	Western Blot 1:1000-1:3000, ELISA 1:100-1:2000, Immunocytochemistry/ Immunofluorescence 1:100

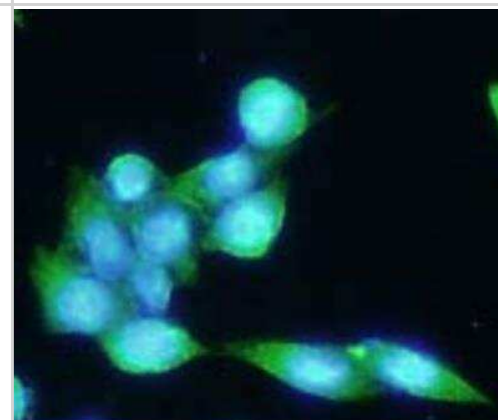


Images

Western Blot: PSMA/FOLH1/NAALADase I Antibody (k1H7) [NBP1-04338] - The Cell lysate of LNCaP(30ug) was resolved by SDS-PAGE, transferred to NC membrane and probed with NBP1-04338. Proteins were visualized using a goat anti-mouse secondary antibody conjugated to HRP and an ECL detection system.



Immunocytochemistry/Immunofluorescence: PSMA/FOLH1/NAALADase I Antibody (k1H7) [NBP1-04338] - PSMA in LNCaP cells line, stained with DAPI (Blue) for nucleus staining and monoclonal anti-human PSMA antibody (1:100) with goat anti-mouse IgG-Alexa fluor 488 conjugate (Green).



Publications

Guldvik IJ, Ekseth L, Kishan AU Et al. Circulating Tumor Cell Persistence Associates with Long-Term Clinical Outcome to a Therapeutic Cancer Vaccine in Prostate Cancer J Pers Med 2021-07-02 [PMID: 34206815] (ICC/IF)

Details:

This citation used the Alexa Fluor 488 format of this antibody.



Novus Biologicals USA

10730 E. Briarwood Avenue
Centennial, CO 80112
USA
Phone: 303.730.1950
Toll Free: 1.888.506.6887
Fax: 303.730.1966
nb-customerservice@bio-techne.com

Bio-Techne Canada

21 Canmotor Ave
Toronto, ON M8Z 4E6
Canada
Phone: 905.827.6400
Toll Free: 855.668.8722
Fax: 905.827.6402
canada.inquires@bio-techne.com

Bio-Techne Ltd

19 Barton Lane
Abingdon Science Park
Abingdon, OX14 3NB, United Kingdom
Phone: (44) (0) 1235 529449
Free Phone: 0800 37 34 15
Fax: (44) (0) 1235 533420
info.EMEA@bio-techne.com

General Contact Information

www.novusbio.com
Technical Support: nb-technical@bio-techne.com
Orders: nb-customerservice@bio-techne.com
General: novus@novusbio.com

Products Related to NBP1-04338

HAF007	Goat anti-Mouse IgG Secondary Antibody [HRP]
NB720-B	Rabbit anti-Mouse IgG (H+L) Secondary Antibody [Biotin]
NBP1-43319-0.5mg	Mouse IgG1 Kappa Isotype Control (P3.6.2.8.1)
NBP3-12866-10ug	Recombinant Human PSMA/FOLH1/NAALADase I His Protein

Limitations

This product is for research use only and is not approved for use in humans or in clinical diagnosis. Primary Antibodies are guaranteed for 1 year from date of receipt.

For more information on our 100% guarantee, please visit www.novusbio.com/guarantee

Earn gift cards/discounts by submitting a review: www.novusbio.com/reviews/submit/NBP1-04338

Earn gift cards/discounts by submitting a publication using this product:
www.novusbio.com/publications

