

Product Datasheet

PU.1/Spi-1 Antibody NBP1-00135

Unit Size: 0.1 mg

Store at -20C. Avoid freeze-thaw cycles.

www.novusbio.com



technical@novusbio.com

Reviews: 2 Publications: 2

Protocols, Publications, Related Products, Reviews, Research Tools and Images at:
www.novusbio.com/NBP1-00135

Updated 10/23/2024 v.20.1

**Earn rewards for product
reviews and publications.**

Submit a publication at www.novusbio.com/publications

Submit a review at www.novusbio.com/reviews/destination/NBP1-00135



NBP1-00135

PU.1/Spi-1 Antibody

Product Information	
Unit Size	0.1 mg
Concentration	0.5 mg/ml
Storage	Store at -20C. Avoid freeze-thaw cycles.
Clonality	Polyclonal
Preservative	0.02% Sodium Azide
Isotype	IgG
Purity	Immunogen affinity purified
Buffer	Tris saline (20 mM Tris pH 7.3, 150 mM NaCl), 0.5% BSA
Product Description	
Host	Goat
Gene ID	6688
Gene Symbol	SPI1
Species	Human
Specificity/Sensitivity	This antibody is expected to recognise both reported isoforms (NP_001074016.1; NP_003111.2).
Immunogen	Peptide with sequence C-DLYQRQTHEY Y corresponding to internal region according to NP_001074016.1, NP_003111.2.
Product Application Details	
Applications	Western Blot, Flow Cytometry, Immunohistochemistry, Immunohistochemistry-Paraffin, Peptide ELISA
Recommended Dilutions	Western Blot 0.03 ug/ml, Flow Cytometry 1:10-1:1000, Immunohistochemistry, Immunohistochemistry-Paraffin, Peptide ELISA Detection limit 1:32000
Application Notes	WB: Approx. 40 kDa band observed in lysates of DAUDI and K562 is reported in scientific literature (PMID: 10867017).

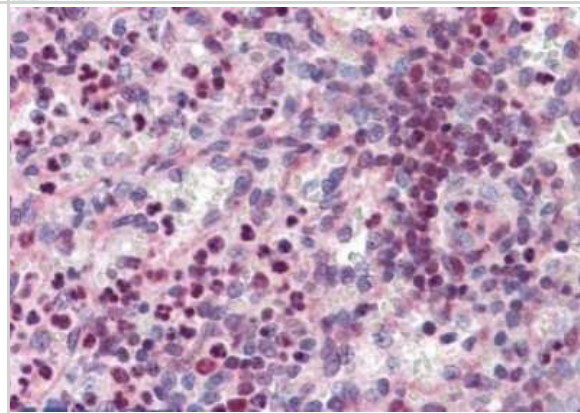


Images

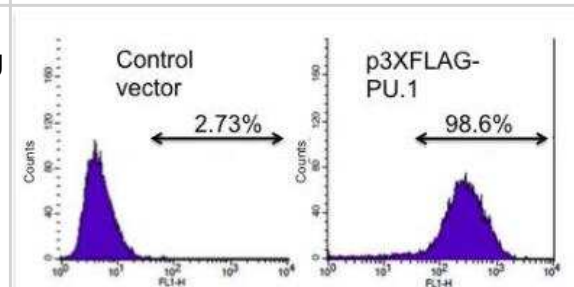
Western Blot: PU.1/Spi-1 Antibody [NBP1-00135] - (0.03ug/ml) Analysis of DAUDI lysate (35ug protein in RIPA buffer). Primary incubation was 1 hour. Detected by chemiluminescence.

250kDa
150kDa
100kDa
75kDa
50kDa
37kDa
25kDa
20kDa
15kDa

Immunohistochemistry-Paraffin: PU.1/Spi-1 Antibody [NBP1-00135] - (3.75ug/ml) staining of paraffin embedded Human Spleen. Steamed antigen retrieval with citrate buffer pH 6, AP-staining.



Flow Cytometry: PU.1/Spi-1 Antibody [NBP1-00135] - Analysis of PU.1/Spi1 in p3xFLAG-PU.1 transfected 293T cells (1 million cells) using anti-PU.1/Spi1 antibody. Image from verified customer review.



Publications

Uvarov P, Ludwig A, Markkanen M et al. Upregulation of the neuron-specific K⁺/Cl⁻ cotransporter expression by transcription factor early growth response 4. J Neurosci 2006-12-27 [PMID: 17192429]

Harendza S, Lovett DH, Stahl RA et al. The hematopoietic transcription factor PU.1 represses gelatinase A transcription in glomerular mesangial cells. J Biol Chem 2000-06-01 [PMID: 10867017]



Novus Biologicals USA

10730 E. Briarwood Avenue
Centennial, CO 80112
USA
Phone: 303.730.1950
Toll Free: 1.888.506.6887
Fax: 303.730.1966
nb-customerservice@bio-techne.com

Bio-Techne Canada

21 Canmotor Ave
Toronto, ON M8Z 4E6
Canada
Phone: 905.827.6400
Toll Free: 855.668.8722
Fax: 905.827.6402
canada.inquires@bio-techne.com

Bio-Techne Ltd

19 Barton Lane
Abingdon Science Park
Abingdon, OX14 3NB, United Kingdom
Phone: (44) (0) 1235 529449
Free Phone: 0800 37 34 15
Fax: (44) (0) 1235 533420
info.EMEA@bio-techne.com

General Contact Information

www.novusbio.com
Technical Support: nb-technical@bio-techne.com
Orders: nb-customerservice@bio-techne.com
General: novus@novusbio.com

Products Related to NBP1-00135

HAF017	Rabbit anti-Goat IgG Secondary Antibody [HRP (Horseradish Peroxidase)]
HAF109	Donkey anti-Goat IgG Secondary Antibody [HRP (Horseradish Peroxidase)]
NB410-28088-1mg	Goat IgG Isotype Control
NBP2-51976-0.05mg	Recombinant Human PU.1/Spi-1 His Protein

Limitations

This product is for research use only and is not approved for use in humans or in clinical diagnosis. Primary Antibodies are guaranteed for 1 year from date of receipt.

For more information on our 100% guarantee, please visit www.novusbio.com/guarantee

Earn gift cards/discounts by submitting a review: www.novusbio.com/reviews/submit/NBP1-00135

Earn gift cards/discounts by submitting a publication using this product:
www.novusbio.com/publications



