

Product Datasheet

Recombinant Human Cyclophilin-E His Protein NBC1-18531

Unit Size: 0.1 mg

Store at 4C short term. Aliquot and store at -20C long term. Avoid freeze-thaw cycles.

www.novusbio.com



technical@novusbio.com

Protocols, Publications, Related Products, Reviews, Research Tools and Images at:
www.novusbio.com/NBC1-18531

Updated 10/23/2024 v.20.1

Earn rewards for product
reviews and publications.

Submit a publication at www.novusbio.com/publications

Submit a review at www.novusbio.com/reviews/destination/NBC1-18531



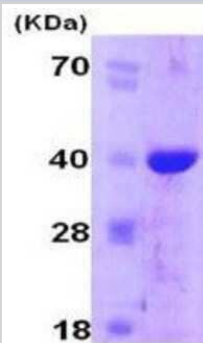
NBC1-18531

Recombinant Human Cyclophilin-E His Protein

| Product Information | |
|-----------------------------|--|
| Unit Size | 0.1 mg |
| Concentration | 1 mg/ml |
| Storage | Store at 4C short term. Aliquot and store at -20C long term. Avoid freeze-thaw cycles. |
| Preservative | No Preservative |
| Purity | >95%, by SDS-PAGE |
| Buffer | 20 mM Tris-HCl buffer (pH 8.0) |
| Target Molecular Weight | 37.5 kDa |
| Product Description | |
| Description | <p>A bioactive recombinant protein with a N-Terminal His-tag and corresponding to the amino acids 1-301 of Human Cyclophilin-E</p> <p>Source: <i>E.coli</i></p> <p>Amino Acid Sequence: MRGSHHHHHH GMASMTGGQQ MGRDLYDDDD KDRWGSMATT KRVLYVGGLA EEVDDKVLHA AFIPFGDITD IQIPLDYETE KHRGFVFEF ELAEDAAAAI DNMNESELF RTIRVNLAKP MRIKEGSSRP VWSDDDWLKK FSGKLEENK EEEGSEPPKA ETQEGEPIAK KARSNPQVYM DIKIGNKPAG RIQMLLRSDV VPMTAENFRC LCTHEKGFGEF KGSSFHRIIP QFMCQGGDFT NHNGTGGKSI YGKKFDDENF ILKHTGPGLL SMANSGPNTN GSQFFLTCDK TDWLDGKHVV FGEVTEGLDV LRQIEAQQSK DGKPKQKVII ADCGEYV</p> |
| Gene ID | 10450 |
| Gene Symbol | PPIE |
| Species | Human |
| Details of Functionality | Specific activity is > 210 nmol/min/ug, and is defined as the amount of enzyme that cleaves 1umole of suc-AAPF-pNA per minute at 1C in Tris-Hcl pH8.0 using chymotrypsin. |
| Product Application Details | |
| Applications | SDS-Page, Enzyme Activity |
| Recommended Dilutions | SDS-Page, Enzyme Activity |

Images

SDS-Page: Cyclophilin-E Protein [NBC1-18531] - PPIE, 37.5 kDa (337 aa), confirmed by MALDI-TOF with a purity of 95% by SDS - PAGE



15% SDS-PAGE (3ug)



Novus Biologicals USA

10730 E. Briarwood Avenue
Centennial, CO 80112
USA
Phone: 303.730.1950
Toll Free: 1.888.506.6887
Fax: 303.730.1966
nb-customerservice@bio-techne.com

Bio-Techne Canada

21 Canmotor Ave
Toronto, ON M8Z 4E6
Canada
Phone: 905.827.6400
Toll Free: 855.668.8722
Fax: 905.827.6402
canada.inquires@bio-techne.com

Bio-Techne Ltd

19 Barton Lane
Abingdon Science Park
Abingdon, OX14 3NB, United Kingdom
Phone: (44) (0) 1235 529449
Free Phone: 0800 37 34 15
Fax: (44) (0) 1235 533420
info.EMEA@bio-techne.com

General Contact Information

www.novusbio.com
Technical Support: nb-technical@bio-techne.com
Orders: nb-customerservice@bio-techne.com
General: novus@novusbio.com

Products Related to NBC1-18531

| | |
|---------------|---|
| NBP2-55449PEP | Cyclophilin-E Recombinant Protein Antigen |
| NB100-56340 | HDAC1 Antibody |
| H00010450-M02 | Cyclophilin-E Antibody (2F5) |
| AF4094 | FKBP51/FKBP5 Antibody [Unconjugated] |

Limitations

This product is for research use only and is not approved for use in humans or in clinical diagnosis. Peptides and proteins are guaranteed for 3 months from date of receipt.

For more information on our 100% guarantee, please visit www.novusbio.com/guarantee

Earn gift cards/discounts by submitting a review: www.novusbio.com/reviews/submit/NBC1-18531

Earn gift cards/discounts by submitting a publication using this product:
www.novusbio.com/publications

