

# Product Datasheet

## Recombinant Human Rheb T7 Protein NBC1-18435

Unit Size: 0.1 mg

Store at 4C short term. Aliquot and store at -20C long term. Avoid freeze-thaw cycles.

[www.novusbio.com](http://www.novusbio.com)



[technical@novusbio.com](mailto:technical@novusbio.com)

Protocols, Publications, Related Products, Reviews, Research Tools and Images at:  
[www.novusbio.com/NBC1-18435](http://www.novusbio.com/NBC1-18435)

Updated 10/23/2024 v.20.1

Earn rewards for product  
reviews and publications.

Submit a publication at [www.novusbio.com/publications](http://www.novusbio.com/publications)

Submit a review at [www.novusbio.com/reviews/destination/NBC1-18435](http://www.novusbio.com/reviews/destination/NBC1-18435)



**NBC1-18435**

## Recombinant Human Rheb T7 Protein

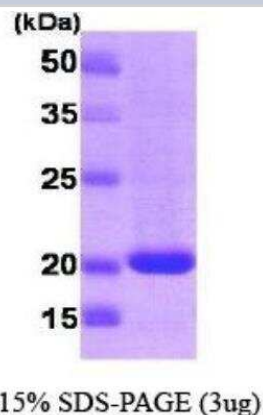
Product Information	
Unit Size	0.1 mg
Concentration	1 mg/ml
Storage	Store at 4C short term. Aliquot and store at -20C long term. Avoid freeze-thaw cycles.
Preservative	No Preservative
Purity	>95%, by SDS-PAGE
Buffer	20 mM Tris-HCl buffer (pH 8.0), 1 mM DTT, 10% glycerol
Target Molecular Weight	21.7 kDa

Product Description	
Description	<p>A recombinant protein with a N-Terminal T7-tag and corresponding to the amino acids 1-181 of Human Rheb</p> <p><b>Source:</b> <i>E.coli</i></p> <p><b>Amino Acid Sequence:</b> MASMTGGQQM GRGSASMPQS KSRKIALGY RSVGKSSLTI QFVEGQFVDS YDPTIENTFT KLITVNGQEY HLQLVDTAGQ DEYSIFPQTY SIDINGYILV YSVTSIKSFE VIKVIHGKLL DMVGKVQIPI MLVGNKKDLH MERVISYEEG KALAESWNA A FLESSAKENQ TAVDVFRRII LEAEKMDGAA SQGKSSC</p>
Gene ID	6009
Gene Symbol	RHEB
Species	Human

Product Application Details	
Applications	SDS-Page
Recommended Dilutions	SDS-Page

**Images**

SDS-Page: Rheb Protein [NBC1-18435] - Rheb, 21.7 kDa (197 aa), confirmed by MALDI-TOF with a purity of 95% by SDS - PAGE





### **Novus Biologicals USA**

10730 E. Briarwood Avenue  
Centennial, CO 80112  
USA  
Phone: 303.730.1950  
Toll Free: 1.888.506.6887  
Fax: 303.730.1966  
nb-customerservice@bio-techne.com

### **Bio-Techne Canada**

21 Canmotor Ave  
Toronto, ON M8Z 4E6  
Canada  
Phone: 905.827.6400  
Toll Free: 855.668.8722  
Fax: 905.827.6402  
canada.inquires@bio-techne.com

### **Bio-Techne Ltd**

19 Barton Lane  
Abingdon Science Park  
Abingdon, OX14 3NB, United Kingdom  
Phone: (44) (0) 1235 529449  
Free Phone: 0800 37 34 15  
Fax: (44) (0) 1235 533420  
info.EMEA@bio-techne.com

### **General Contact Information**

www.novusbio.com  
Technical Support: nb-technical@bio-techne.com  
Orders: nb-customerservice@bio-techne.com  
General: novus@novusbio.com

### **Products Related to NBC1-18435**

---

NBP1-76432PEP	Rheb Antibody Blocking Peptide
AF887	AKT [p Ser473] Antibody [Unconjugated] - Pan Specific
H00006009-M01	Rheb Antibody (2C11)
NB200-157	4EBP1 Antibody

---

### **Limitations**

This product is for research use only and is not approved for use in humans or in clinical diagnosis. Peptides and proteins are guaranteed for 3 months from date of receipt.

For more information on our 100% guarantee, please visit [www.novusbio.com/guarantee](http://www.novusbio.com/guarantee)

Earn gift cards/discounts by submitting a review: [www.novusbio.com/reviews/submit/NBC1-18435](http://www.novusbio.com/reviews/submit/NBC1-18435)

Earn gift cards/discounts by submitting a publication using this product:  
[www.novusbio.com/publications](http://www.novusbio.com/publications)

