

Product Datasheet

LC3 Antibody Pack NB910-40435-1Pack

Unit Size: 1 Pack

Store at 4C short term. Aliquot and store at -20C long term. Avoid freeze-thaw cycles.

www.novusbio.com



technical@novusbio.com

Reviews: 3 Publications: 14

Protocols, Publications, Related Products, Reviews, Research Tools and Images at:
www.novusbio.com/NB910-40435

Updated 12/20/2023 v.20.1

**Earn rewards for product
reviews and publications.**

Submit a publication at www.novusbio.com/publications

Submit a review at www.novusbio.com/reviews/destination/NB910-40435



NB910-40435-1Pack

LC3 Antibody Pack

Product Information	
Unit Size	1 Pack
Concentration	Concentration of individual antibodies may be found on the vial label. If unlisted please contact technical services.
Storage	Store at 4C short term. Aliquot and store at -20C long term. Avoid freeze-thaw cycles.
Product Description	
Description	This pack contains 1 vial each of: NB100-2220 (0.1 mL) and NB100-2331 (0.1 mL).
Gene ID	81631
Gene Symbol	MAP1LC3B
Species	Human, Mouse, Rat, Porcine, Alligator, Amphibian, Avian, Bacteria, Bovine, Canine, Chicken, Chinese Hamster, Fish, Guinea Pig, Hamster, Invertebrate, Plant, Primate, Monkey, Rabbit, Golden Syrian Hamster, Zebrafish
Reactivity Notes	Antibodies in this pack are validated for use in the following species: NB100-2331: Amphibian, Canine, Fish, Human, Mouse, Plant, Rat, Zebrafish NB100-2220: Alligator, Avian, Bacteria, Bovine, Canine, Chicken, Chinese Hamster, Golden Syrian Hamster, Guinea Pig, Hamster, Human, Invertebrate, Monkey, Mouse, Porcine, Primate, Rabbit, Rat, Zebrafish Fish reactivity reported in scientific literature (PMID:32818499).
Marker	Autophagosome Marker
Immunogen	For NB100-2331: A synthetic peptide made to an internal portion of the human LC3 protein sequence (between residues 25-121) [Uniprot: Q9H492]. For NB100-2220: Polyclonal LC3B Antibody was made to a synthetic peptide made to an N-terminal portion of the human LC3B protein sequence (between residues 1-100) [UniProt# Q9GZQ8].
Kit Components	NB100-2331: LC3A Antibody - BSA Free, NB100-2220: LC3B Antibody - BSA Free
Product Application Details	
Applications	Western Blot, Simple Western, ELISA, Flow Cytometry, Immunoblotting, Immunocytochemistry/ Immunofluorescence, Immunohistochemistry, Immunohistochemistry-Frozen, Immunohistochemistry-Paraffin, Immunoprecipitation, SDS-Page, Proximity Ligation Assay, Southern Blot, Chromatin Immunoprecipitation (ChIP), Immunohistochemistry Whole-Mount, Knockdown Validated, Knockout Validated
Recommended Dilutions	Western Blot, Simple Western, Flow Cytometry, ELISA, Immunohistochemistry, Immunocytochemistry/ Immunofluorescence, Immunoprecipitation, Immunohistochemistry-Paraffin, Immunohistochemistry-Frozen, Immunoblotting, Proximity Ligation Assay, SDS-Page, Southern Blot, Immunohistochemistry Whole-Mount, Chromatin Immunoprecipitation (ChIP), Knockout Validated, Knockdown Validated

Application Notes

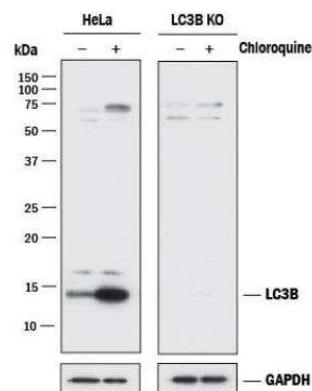
Antibodies in this pack are validated for the following applications:

NB100-2331: Chromatin Immunoprecipitation, ELISA, Flow Cytometry, Immunoblotting, Immunocytochemistry/Immunofluorescence, Immunohistochemistry, Immunohistochemistry Whole-Mount, Immunohistochemistry-Frozen, Immunohistochemistry-Paraffin, Immunoprecipitation, Simple Western, Southern Blot, Western Blot

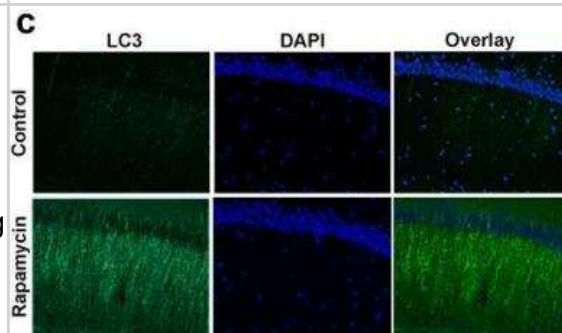
NB100-2220: Chromatin Immunoprecipitation (ChIP), ELISA, Flow Cytometry, Immunoblotting, Immunocytochemistry/Immunofluorescence, Immunohistochemistry, Immunohistochemistry-Frozen, Immunohistochemistry-Paraffin, Immunoprecipitation, Knockdown Validated, Knockout Validated, Proximity Ligation Assay, SDS-Page, Simple Western, Western Blot

Images

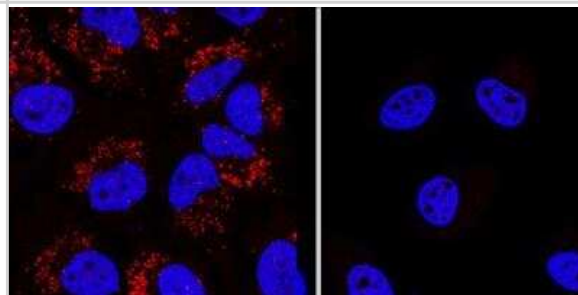
Knockout Validated: LC3 Antibody Pack [NB910-40435] - Lysates of HeLa parental cell line and LC3B knockout HeLa cell line (KO) untreated (-) or treated (+) with 50 μ M Chloroquine for 18 hours. PVDF (Polyvinylidene difluoride) membrane was probed with 0.5 μ g/mL of Rabbit Anti-LC3B Polyclonal Antibody (Catalog # NB100-2220) followed by HRP-conjugated Anti-Rabbit IgG Secondary Antibody (Catalog# HAF008). A specific band was detected for LC3B at a molecular weight of approximately 15 kDa (as indicated) in the parental HeLa cell line, but is not detectable in the knockout HeLa cell line. GAPDH is shown as a loading control. This experiment was conducted under reducing conditions. LC3B Antibody [NB100-2220]



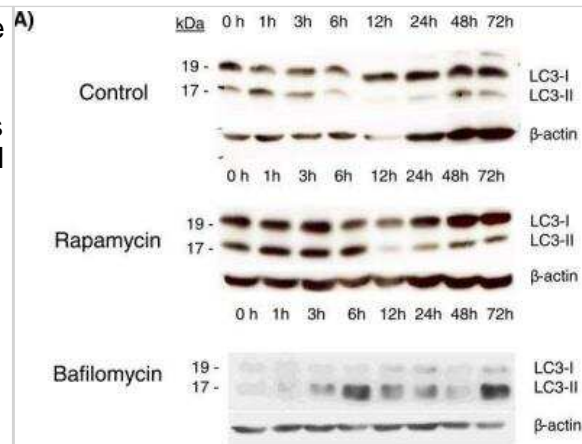
Immunohistochemistry: LC3 Antibody Pack [NB910-40435] - Rapamycin increases autophagy in brains of PDAPP mice. Representative epifluorescent (c200x) image of hippocampal CA1 in control- and rapamycin-fed transgenic PDAPP mice stained with an anti-LC3 antibody. An increase in LC3-immunoreactive puncta was observed in CA1 projections of transgenic PDAPP mice following rapamycin administration. Image collected and cropped by CiteAb from the following publication (<https://dx.plos.org/10.1371/journal.pone.0009979>) licensed under a CC-BY license. LC3A Antibody [NB100-2331]



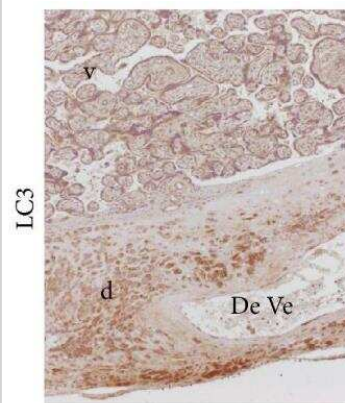
Knockout Validated: LC3 Antibody Pack [NB910-40435] - LC3B was detected in immersion fixed Chloroquine treated HeLa cells (left) but was not detected in LC3B knockout HeLa cells (right) using rabbit anti-human LC3B polyclonal antibody (Catalog #NB100-2220) at 0.3 μ g/mL for 3 hours at room temperature. Cells were stained using the NorthernLights (TM) 557-conjugated anti-Rabbit IgG Secondary Antibody (red; Catalog # NL004) and counterstained with DAPI (blue). Specific staining was localized to cytoplasm.



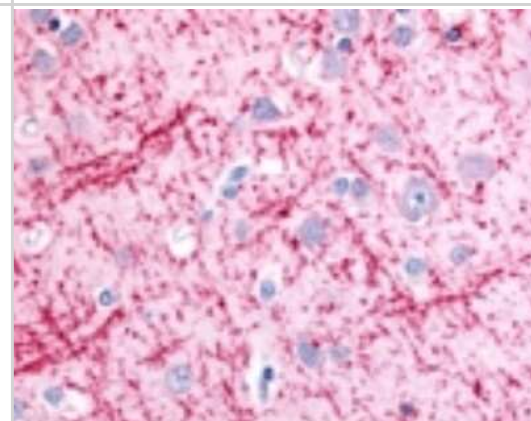
Western Blot: LC3 Antibody Pack [NB910-40435] - High autophagosome concentration is consumed during early immortalized human mesenchymal stem cell differentiation. Immortalized human mesenchymal stem cells were differentiated under osteogenic conditions (see Materials and methods) and assayed for changes in LC3I and LC3II during a 72-hour window. Cells were differentiated under standard conditions (top) or with addition of 5 μ M rapamycin (middle) or 5 nM bafilomycin (bottom) for the first 3 hours of differentiation to modulate autophagy. Immunoblots were performed for LC3 at the indicated time points to assess autophagosome degradation via relative changes in LC3II (lower band; 17 kDa). Studies were repeated three times with similar trends seen consistently. Image collected and cropped by CiteAb from the following publication ([//stemcellres.com/content/5/6/140](http://stemcellres.com/content/5/6/140)), licensed under a CC-BY license. LC3A Antibody [NB100-2331]



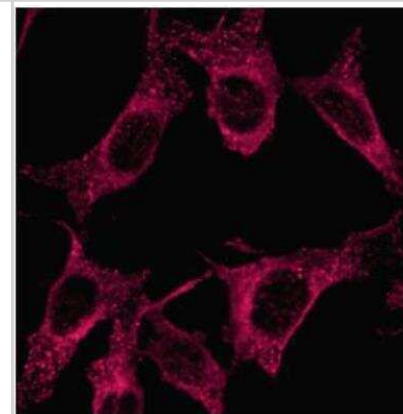
Immunohistochemistry: LC3 Antibody Pack [NB910-40435] - Localization of LC3 by immunohistochemical method. The immunohistochemical staining shows that LC3, CRF, and HIF-1alpha have an overlapping localization in villous and extravillous trophoblast. d: decidua; v: villi; DeVe: decidual vessel. Original magnification 40x. Image collected and cropped by CiteAb from the following publication ([//www.hindawi.com/journals/bmri/2013/689768/](http://www.hindawi.com/journals/bmri/2013/689768/)) licensed under a CC-BY license. LC3B Antibody [NB100-2220]



Immunohistochemistry: LC3 Antibody Pack [NB910-40435] - Brain, Cerebral Cortex, Cell Processes in Gray Matter 40x.



Immunohistochemistry: LC3 Antibody Pack [NB910-40435] - Analysis in PFA fixed NIH/3T3 cells using anti-LC3A antibody. Image from verified customer review. LC3A Antibody [NB100-2331]



Publications

Wang Y, Zhao H, Nie X et al. Zinc application alleviates the adverse renal effects of arsenic stress in a protein quality control way in common carp Environ. Res. 2020-08-17 [PMID: 32818499] (WB, Fish)

Wang SL, Shao BZ, Zhao SB et al. Intestinal autophagy links psychosocial stress with gut microbiota to promote inflammatory bowel disease Cell Death Dis [PMID: 31564717] (WB, Mouse)

Wu A, Hu P, Lin J et al. Activating Cannabinoid Receptor 2 Protects Against Diabetic Cardiomyopathy Through Autophagy Induction. BMC Cancer. 2018-11-15 [PMID: 30459625] (WB, Mouse)

Kang I, Lee BC, Lee JY et al. Stem cell-secreted 14,15- epoxyeicosatrienoic acid rescues cholesterol homeostasis and autophagic flux in Niemann-Pick-type C disease. Arch Med Sci. 2018-10-01 [PMID: 30429460] (WB, Mouse)

Xie Q, Liu M, Yan YF et al. Exogenous tetraoctin protects against MPP⁺-induced neurotoxicity by inhibiting apoptosis and autophagy through p70S6K1 World Neurosurg 2018-10-17 [PMID: 30342268] (WB, Human)

Xie W, Zheng W, Liu M et al. BRF1 ameliorates LPS-induced inflammation through autophagy crosstalking with MAPK/ERK signaling Genes Dis 2018-09-01 [PMID: 30320187] (ICC/IF, Mouse)

Song R, Yang Y, Lei H et al. HDAC6 inhibition protects cardiomyocytes against doxorubicin-induced acute damage by improving α -tubulin acetylation J. Mol. Cell. Cardiol. 2018-10-10 [PMID: 30315806] (WB, Rat)

An Q, Yan W, Zhao Y, Yu K. Enhanced neutrophil autophagy and increased concentrations of IL-6, IL-8, IL-10 and MCP-1 in rheumatoid arthritis Int. Immunopharmacol. 2018-10-09 [PMID: 30312880] (IF/IHC, ICC/IF, Human)

Bao J, Shi Y, Tao M et al. Pharmacological inhibition of autophagy by 3-MA attenuates hyperuricemic nephropathy Clin. Sci. 2018-10-07 [PMID: 30293967] (WB, Rat)

Chung H, Choi J, Park S Ghrelin protects adult rat hippocampal neural stem cells from excessive autophagy during oxygen-glucose deprivation Endocr. J. 2017-10-21 [PMID: 29057768] (WB, Rat, Human)

Ye B, Wang Q, et al. Restoring autophagic flux attenuates cochlear spiral ganglion neuron degeneration by promoting TFEB nuclear translocation via inhibiting MTOR. Autophagy 2019-06-01 [PMID: 30706760] (WB, ICC/IF, Mouse)

Wu Y, Li D, Wang Y, Liu X. Beta-Defensin 2 and 3 Promote Bacterial Clearance of *Pseudomonas aeruginosa* by Inhibiting Macrophage Autophagy through Downregulation of Early Growth Response Gene-1 and c-FOS. Front. Immunol. 2018-02-13 [PMID: 29487594] (Human)

More publications at <http://www.novusbio.com/NB910-40435>



Novus Biologicals USA

10730 E. Briarwood Avenue
Centennial, CO 80112
USA
Phone: 303.730.1950
Toll Free: 1.888.506.6887
Fax: 303.730.1966
nb-customerservice@bio-techne.com

Bio-Techne Canada

21 Canmotor Ave
Toronto, ON M8Z 4E6
Canada
Phone: 905.827.6400
Toll Free: 855.668.8722
Fax: 905.827.6402
canada.inquires@bio-techne.com

Bio-Techne Ltd

19 Barton Lane
Abingdon Science Park
Abingdon, OX14 3NB, United Kingdom
Phone: (44) (0) 1235 529449
Free Phone: 0800 37 34 15
Fax: (44) (0) 1235 533420
info.EMEA@bio-techne.com

General Contact Information

www.novusbio.com
Technical Support: nb-technical@bio-techne.com
Orders: nb-customerservice@bio-techne.com
General: novus@novusbio.com

Products Related to NB910-40435-1Pack

NBP3-21266PEP	LC3 Recombinant Protein Antigen
AF835	Caspase-3 Antibody [Unconjugated] - Active
NBP3-21266-100ul	LC3 Antibody
H00008878-M01	p62/SQSTM1 Antibody (2C11)

Limitations

This product is for research use only and is not approved for use in humans or in clinical diagnosis. Antibody Packs are guaranteed for 1 year from date of receipt.

For more information on our 100% guarantee, please visit www.novusbio.com/guarantee

Earn gift cards/discounts by submitting a review: www.novusbio.com/reviews/submit/NB910-40435

Earn gift cards/discounts by submitting a publication using this product:
www.novusbio.com/publications

