

# Product Datasheet

## 293 Whole Cell Lysate NB800-PC6

Unit Size: 0.5 mg

Store at -80C. Avoid freeze-thaw cycles.

[www.novusbio.com](http://www.novusbio.com)



[technical@novusbio.com](mailto:technical@novusbio.com)

Protocols, Publications, Related Products, Reviews, Research Tools and Images at:  
[www.novusbio.com/NB800-PC6](http://www.novusbio.com/NB800-PC6)

Updated 10/23/2024 v.20.1

Earn rewards for product  
reviews and publications.

Submit a publication at [www.novusbio.com/publications](http://www.novusbio.com/publications)

Submit a review at [www.novusbio.com/reviews/destination/NB800-PC6](http://www.novusbio.com/reviews/destination/NB800-PC6)



**NB800-PC6****293 Whole Cell Lysate****Product Information**

<b>Unit Size</b>	0.5 mg
<b>Concentration</b>	2.0 mg/ml
<b>Storage</b>	Store at -80C. Avoid freeze-thaw cycles.
<b>Buffer</b>	Standard RIPA buffer including protease and phosphatase inhibitors and 0.1% SDS diluted in 2x Laemmli Sample Buffer (125 mM Tris HCl, 4% SDS, 50% Glycerol and 0.02% bromophenol blue, pH 6.8)

**Product Description**

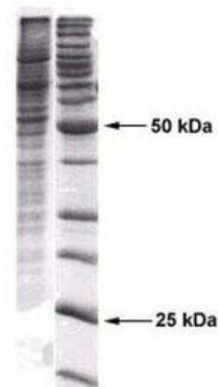
<b>Species</b>	Human
<b>Specificity/Sensitivity</b>	293 whole cell extract lysate
<b>Lysate Type</b>	Cell
<b>Lysate Subcellular Fraction</b>	Whole

**Product Application Details**

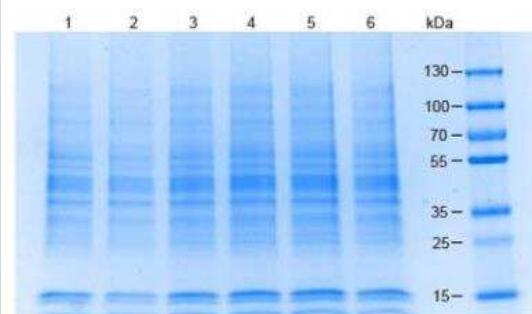
<b>Applications</b>	Western Blot, SDS-Page
<b>Recommended Dilutions</b>	Western Blot, SDS-Page
<b>Application Notes</b>	Ready-to-use lysates are especially prepared as positive controls for separation by SDS-PAGE and subsequent western blot analysis. Lysates are prepared in denaturing buffer WITHOut dissociating agents . Heat lysate - 95C for 5 minutes and rapidly cool. If dissociating conditions are desired, add reducing agent prior - heating. The recommended loading volume per lane is 10-20 ul depending on the size format of your gel.

**Images**

Western Blot: 293 Whole Cell Lysate [NB800-PC6] - Lane 1: Coomassie stain of 0.02 ml 293 extract (NB 800-PC6), separated in a 4-20% gradient gel under reducing conditions. Lane 2: Molecular weight standard.



SDS-Page: 293 Whole Cell Lysate [NB800-PC6] - Coomassie stained SDS-PAGE of 20 ug of (1) Hela WCL, (2) Jurkat WCL, (3) HEK 293 WCL, (4) MCF-7 WCL, (5) A 549 WCL, (6) Raji WCL separated using a 4 -20% gradient gel under reducing conditions. Molecular weight standards are shown.





### **Novus Biologicals USA**

10730 E. Briarwood Avenue  
Centennial, CO 80112  
USA

Phone: 303.730.1950

Toll Free: 1.888.506.6887

Fax: 303.730.1966

[nb-customerservice@bio-techne.com](mailto:nb-customerservice@bio-techne.com)

### **Bio-Techne Canada**

21 Canmotor Ave  
Toronto, ON M8Z 4E6  
Canada

Phone: 905.827.6400

Toll Free: 855.668.8722

Fax: 905.827.6402

[canada.inquires@bio-techne.com](mailto:canada.inquires@bio-techne.com)

### **Bio-Techne Ltd**

19 Barton Lane  
Abingdon Science Park  
Abingdon, OX14 3NB, United Kingdom

Phone: (44) (0) 1235 529449

Free Phone: 0800 37 34 15

Fax: (44) (0) 1235 533420

[info.EMEA@bio-techne.com](mailto:info.EMEA@bio-techne.com)

### **General Contact Information**

[www.novusbio.com](http://www.novusbio.com)

Technical Support: [nb-technical@bio-techne.com](mailto:nb-technical@bio-techne.com)

Orders: [nb-customerservice@bio-techne.com](mailto:nb-customerservice@bio-techne.com)

General: [novus@novusbio.com](mailto:novus@novusbio.com)

### **Limitations**

This product is for research use only and is not approved for use in humans or in clinical diagnosis. Lysates are guaranteed for 6 months from date of receipt.

For more information on our 100% guarantee, please visit [www.novusbio.com/guarantee](http://www.novusbio.com/guarantee)

Earn gift cards/discounts by submitting a review: [www.novusbio.com/reviews/submit/NB800-PC6](http://www.novusbio.com/reviews/submit/NB800-PC6)

Earn gift cards/discounts by submitting a publication using this product:  
[www.novusbio.com/publications](http://www.novusbio.com/publications)

