

# Product Datasheet

## HeLa Whole Cell Lysate NB800-PC1

Unit Size: 0.1 mg

Aliquot and store at -20C or -80C. Avoid freeze-thaw cycles.

[www.novusbio.com](http://www.novusbio.com)



[technical@novusbio.com](mailto:technical@novusbio.com)

### Publications: 1

Protocols, Publications, Related Products, Reviews, Research Tools and Images at:  
[www.novusbio.com/NB800-PC1](http://www.novusbio.com/NB800-PC1)

Updated 10/23/2024 v.20.1

Earn rewards for product  
reviews and publications.

Submit a publication at [www.novusbio.com/publications](http://www.novusbio.com/publications)

Submit a review at [www.novusbio.com/reviews/destination/NB800-PC1](http://www.novusbio.com/reviews/destination/NB800-PC1)



**NB800-PC1**

HeLa Whole Cell Lysate

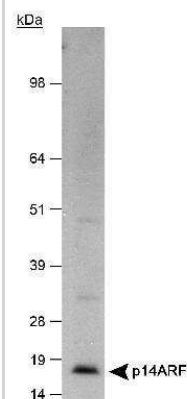
Product Information	
Unit Size	0.1 mg
Concentration	2.5 mg/ml
Storage	Aliquot and store at -20C or -80C. Avoid freeze-thaw cycles.
Preservative	No Preservative
Buffer	Standard RIPA buffer including protease inhibitors and 0.1% SDS diluted in 1 X lithium dodecyl sulfate (LDS) sample buffer with bromophenol blue and 40-70% glycerol, pH 8.4. Denaturing agents have not been added.

Product Description	
Species	Human
Lysate Type	Cell
Lysate Tissue	Reproductive
Lysate Subcellular Fraction	Whole

Product Application Details	
Applications	Western Blot
Recommended Dilutions	Western Blot
Application Notes	This lysate is prepared as a positive control for separation by SDS-PAGE and subsequent Western blot analysis. Lysates are prepared in denaturing buffer WITHOUT reducing agents (i.e. 2-mercaptoethanol (BME) or dithiothreitol (DTT)). If reducing conditions are desired, add a reducing agent prior to heating. Heat lysate to 95 degrees C for 5 minutes and rapidly cool. The recommended loading amount is 0.01-0.03 mg per lane.

**Images**

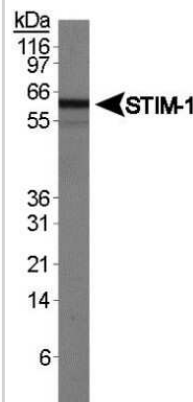
Western Blot: HeLa Whole Cell Lysate [NB800-PC1] - WB analysis of HeLa whole cell lysate (NB800-PC1) using p14ARF antibody (NB200-111) with ECL detection method.



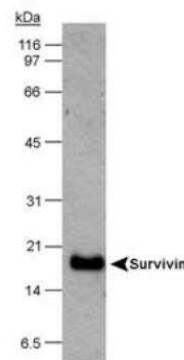
Western Blot: HeLa Whole Cell Lysate [NB800-PC1] - Ponceau S staining of HeLa whole cell lysate using NB800-PC1.



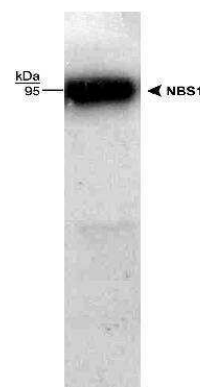
Western Blot: HeLa Whole Cell Lysate [NB800-PC1] - Analysis of STIM-1 antibody (NB110-60547) using HeLa whole cell lysate [NB800-PC1].



Western Blot: HeLa Whole Cell Lysate [NB800-PC1] - WB analysis of 30ug of HeLa whole cell lysate (NB800-PC1) using rabbit polyclonal Survivin antibody (NB 500-201) at 1ug/ml concentration. Detection was performed using ECL based method with 1 minute exposure time.



Western Blot: HeLa Whole Cell Lysate [NB800-PC1] - WB analysis of HeLa whole cell lysate (NB800-PC1) using rabbit polyclonal NBS1 antibody (NB100-143) with detection employing ECL method.



## Publications

Guihurt Santiago J, Burgos-Tirado N, Lafontaine DD, et al. Adhesion G protein-coupled receptor, ELTD1, is a potential therapeutic target for retinoblastoma migration and invasion BMC cancer 2021-01-11 [PMID: 33430814] (WB)



### **Novus Biologicals USA**

10730 E. Briarwood Avenue  
Centennial, CO 80112  
USA

Phone: 303.730.1950

Toll Free: 1.888.506.6887

Fax: 303.730.1966

[nb-customerservice@bio-techne.com](mailto:nb-customerservice@bio-techne.com)

### **Bio-Techne Canada**

21 Canmotor Ave  
Toronto, ON M8Z 4E6  
Canada

Phone: 905.827.6400

Toll Free: 855.668.8722

Fax: 905.827.6402

[canada.inquires@bio-techne.com](mailto:canada.inquires@bio-techne.com)

### **Bio-Techne Ltd**

19 Barton Lane  
Abingdon Science Park  
Abingdon, OX14 3NB, United Kingdom

Phone: (44) (0) 1235 529449

Free Phone: 0800 37 34 15

Fax: (44) (0) 1235 533420

[info.EMEA@bio-techne.com](mailto:info.EMEA@bio-techne.com)

### **General Contact Information**

[www.novusbio.com](http://www.novusbio.com)

Technical Support: [nb-technical@bio-techne.com](mailto:nb-technical@bio-techne.com)

Orders: [nb-customerservice@bio-techne.com](mailto:nb-customerservice@bio-techne.com)

General: [novus@novusbio.com](mailto:novus@novusbio.com)

### **Limitations**

This product is for research use only and is not approved for use in humans or in clinical diagnosis. Lysates are guaranteed for 6 months from date of receipt.

For more information on our 100% guarantee, please visit [www.novusbio.com/guarantee](http://www.novusbio.com/guarantee)

Earn gift cards/discounts by submitting a review: [www.novusbio.com/reviews/submit/NB800-PC1](http://www.novusbio.com/reviews/submit/NB800-PC1)

Earn gift cards/discounts by submitting a publication using this product:  
[www.novusbio.com/publications](http://www.novusbio.com/publications)

