

Product Datasheet

Goat anti-Mouse Kappa Light Chain Secondary Antibody NB7546

Unit Size: 1 ml

Store at 4C. Do not freeze.

www.novusbio.com



technical@novusbio.com

Publications: 8

Protocols, Publications, Related Products, Reviews, Research Tools and Images at:
www.novusbio.com/NB7546

Updated 10/23/2024 v.20.1

Earn rewards for product
reviews and publications.

Submit a publication at www.novusbio.com/publications

Submit a review at www.novusbio.com/reviews/destination/NB7546



NB7546**Goat anti-Mouse Kappa Light Chain Secondary Antibody****Product Information**

| | |
|----------------------|---------------------------------|
| Unit Size | 1 ml |
| Concentration | 1.0 mg/ml |
| Storage | Store at 4C. Do not freeze. |
| Clonality | Polyclonal |
| Preservative | 0.09% Sodium Azide |
| Isotype | IgG |
| Purity | Immunogen affinity purified |
| Buffer | Phosphate Buffered Saline (PBS) |

Product Description

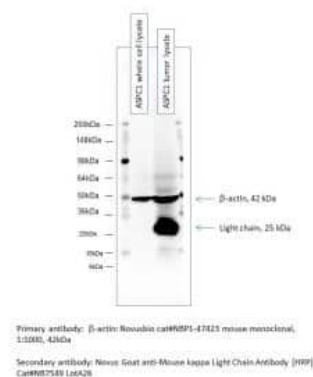
| | |
|--------------------------------|---|
| Host | Goat |
| Gene ID | 3514 |
| Gene Symbol | IGKC |
| Species | Mouse |
| Specificity/Sensitivity | By immunoelectrophoresis and ELISA this reacts specifically with kappa light chains common to all mouse immunoglobulins. No was detected against lambda light chain or non-immunoglobulin serum proteins. |
| Immunogen | Mouse Kappa Light Chain |

Product Application Details

| | |
|------------------------------|--|
| Applications | Western Blot, ELISA, Immunocytochemistry/ Immunofluorescence, Immunohistochemistry, Immunohistochemistry-Paraffin |
| Recommended Dilutions | Western Blot 1:1000 - 1:30000, ELISA 1:1000 - 1:30000, Immunohistochemistry 1:200- 1:2000, Immunocytochemistry/ Immunofluorescence 1:200- 1:2000, Immunohistochemistry-Paraffin 1:200 - 1:2000 |
| Application Notes | ELISA 1:1,000 - 1:30,000; for coating plates 1:100 - 1:500 |

Images

Western Blot: Goat anti- Mouse, Human Kappa Light Chain Secondary Antibody [NB7546] - Analysis in 1. c whole cell lysate, 2. ASPC1 tumor lysate. Image from verified customer review. Image using the HRP format of this antibody.



Publications

Suzuki M, Kuromi H, Shindo M et al. A Drosophila model of diabetic neuropathy reveals a role of proteasome activity in the glia iScience 2023-05-01 [PMID: 37378316] (Western Blot)

Details:
WB 1:10000

Bauer E, Schleder M, Scheicher R et al. Cooperation of ETV6/RUNX1 and BCL2 enhances immunoglobulin production and accelerates glomerulonephritis in transgenic mice. Oncotarget. [PMID: 26919255]

Details:
Citation using the HRP form of this antibody.

Miyamoto S, Iwamoto R, Furuya A et al. A Novel Anti-Human HB-EGF Monoclonal Antibody with Multiple Anti-Tumor Mechanisms Against Ovarian Cancer Cells. Clinical Cancer Research: An Official Journal of the American Association for Cancer Research. [PMID: 21918176]

Details:
Citation using the FITC form of this antibody.

Mehenni H, Lin-Marq N, Buchet-Poyau K et al. LKB1 interacts with and phosphorylates PTEN: a functional link between two proteins involved in cancer predisposing syndromes. Hum Mol Genet. [PMID: 15987703]

Details:
Citation using the HRP form of this antibody.

Saitoh Y, Terada N, Saitoh S et al. Three-dimensional reconstruction of living mouse liver tissues using cryotechniques with confocal laser scanning microscopy. J Electron Microsc (Tokyo) 2010-01-01 [PMID: 20709827]

Papic N, Hunn JP, Pawlowski N et al. Inactive and active states of the interferon-inducible resistance GTPase, Irga6, in vivo. J Biol Chem 2008-11-01 [PMID: 18784077]

Tomomori-Sato C, Sato S, Parmely TJ et al. A mammalian mediator subunit that shares properties with Saccharomyces cerevisiae mediator subunit Cse2. J Biol Chem 2004-02-01 [PMID: 14638676]

Sato S, Tomomori-Sato C, Banks CA et al. A mammalian homolog of Drosophila melanogaster transcriptional coactivator intersex is a subunit of the mammalian Mediator complex. J Biol Chem 2003-12-01 [PMID: 14576168]





Novus Biologicals USA

10730 E. Briarwood Avenue
Centennial, CO 80112
USA
Phone: 303.730.1950
Toll Free: 1.888.506.6887
Fax: 303.730.1966
nb-customerservice@bio-techne.com

Bio-Techne Canada

21 Canmotor Ave
Toronto, ON M8Z 4E6
Canada
Phone: 905.827.6400
Toll Free: 855.668.8722
Fax: 905.827.6402
canada.inquires@bio-techne.com

Bio-Techne Ltd

19 Barton Lane
Abingdon Science Park
Abingdon, OX14 3NB, United Kingdom
Phone: (44) (0) 1235 529449
Free Phone: 0800 37 34 15
Fax: (44) (0) 1235 533420
info.EMEA@bio-techne.com

General Contact Information

www.novusbio.com
Technical Support: nb-technical@bio-techne.com
Orders: nb-customerservice@bio-techne.com
General: novus@novusbio.com

Products Related to NB7546

| | |
|--------------------|--|
| H00003514-P01-10ug | Recombinant Human Kappa Light Chain GST (N-Term) Protein |
| NB100-1028 | AIF-1/Iba1 Antibody |
| NBP2-34258-0.1mg | Kappa Light Chain Antibody (HP6053 + L1C1) |
| 243-B3-002 | TGF-beta 3 [Unconjugated] |

Limitations

This product is for research use only and is not approved for use in humans or in clinical diagnosis. Secondary Antibodies are guaranteed for 1 year from date of receipt.

For more information on our 100% guarantee, please visit www.novusbio.com/guarantee

Earn gift cards/discounts by submitting a review: www.novusbio.com/reviews/submit/NB7546

Earn gift cards/discounts by submitting a publication using this product:
www.novusbio.com/publications

